

The background of the cover is a soft-focus photograph of a field. In the foreground, a bumblebee is captured in flight, moving from left to right. Below it, a purple thistle flower is in bloom. The rest of the field is filled with tall, golden-brown grasses and other plants, creating a warm, natural atmosphere.

octopus renewables
infrastructure trust

Octopus Renewables Infrastructure Trust plc

ESG & Impact Report

For the year ended
31 December 2024

Contents

ESG & Impact Report Highlights	2
Foreword	3
ESG & Impact Strategy	4
Stewardship and Engagement	4
Performance	5
Delivering the investment objective	6
Integration into the investment cycle	6
Regulatory disclosures	6
Performance initiatives	6
Case Study: Driving Performance Through Stakeholder Engagement & Innovation	7
UN SDG specific contributions for Performance	9
Planet	10
Maximising ORIT's positive environmental impact	11
Carbon measurement and reporting	11
Carbon reduction	13
Planet initiatives	15
Case Study: Promoting Biodiversity Across and Around ORIT's Renewable Energy Sites	16
Case Study: Driving Community-Led Climate Action Through Education, Innovation, and Policy	17
Case Study: Inspiring Young Climate Leaders	19
UN SDG specific contributions for Planet	20
People	21
Managing our impact on society	21
Health and safety approach	22
Diversity and inclusion	23
Promoting a "Just Transition"	24
People initiatives	24
Case Study: Unlocking Benefits in Ireland	26
Case Study: Exploring Innovative Community Benefit Funds Across ORIT Sites	28
Case Study: Skilling for a Just Transition – Solar Installer Training Programme	31
UN SDG specific contributions for People	33

ESG & Impact Report Highlights

As at 31 December 2024



£1,029m

Total value of sustainable investments – 100% investments committed into renewables

(2023: £1,127m)



1,389 GWh

Potential annual renewable electricity generated once fully operational

(2023: 1,569 GWh)



362k

Estimated annual equivalent homes powered by clean energy once fully operational

(2023: 384k)



383k

Estimated annual equivalent tonnes of carbon avoided once fully operational

(2023: 400k)



1.9m

Equivalent new trees required to avoid same carbon

(2023: 2.0m)



195k

Equivalent cars off the road required to avoid same carbon

(2023: 203k)

All metrics are calculated based on an estimated annual renewable energy generation of the investment portfolio once fully operational and on the basis of ORIT's equity stake.

For more information on how these metrics have been calculated please refer to the separately published [ESG & Impact Strategy](#).



Chisbon solar farm

Foreword

Dear Stakeholders,

ORIT continues to invest in the real-world delivery of the energy transition. While some markets are backtracking on climate action and ESG commitments, questioning their role in financial success, ORIT's position is clear: long-term performance cannot be achieved without considering people and planet. Energy security, economic resilience, and environmental sustainability are not competing priorities—they are interdependent.

ORIT's portfolio now stands at 41 renewable energy assets, generating a potential 1,389 GWh of clean power and avoiding 383,000 tonnes of CO₂ emissions. These investments contribute directly to energy security, reducing reliance on fossil fuels and ensuring the resilience of power systems. Through disciplined stewardship and robust asset management, we continue to optimise the performance of our assets while exploring new ways to enhance efficiency and sustainability. As an Article 9 fund under the Sustainable Finance Disclosure Regulation ("SFDR"), ORIT is committed to investing exclusively in sustainable activities, ensuring that our capital supports the transition to a low-carbon economy.

Beyond environmental impact, ORIT is focused on the social and economic aspects of the energy transition. Our investment strategy prioritises not only clean energy generation but also the people and communities affected by the shift to renewables. This year, ORIT has helped to support 176 full-time equivalent jobs and has invested £340,000 into initiatives that create meaningful community and environmental benefits beyond the c.£1m committed in ORIT's sites-specific community benefit funds. We continue to work with our long-standing impact partners, including BizGive, Earth Energy Education, and Good Bees, enabling the funding of more exciting initiatives across the UK and increased school engagement near our sites. Our impact partnerships have also expanded, with Citizens UK delivering a Climate Academy to empower young people in leading local climate action, and Generation UK and Ireland launching solar installer programmes to support individuals facing barriers to employment.

As the regulatory environment continues to evolve, ORIT remains well-positioned to adapt. This year, ORIT has further strengthened its approach by aligning with TCFD recommendations and completing its first Carbon Disclosure Project ("CDP") submission, achieving a B score, the highest possible for an SME. Our governance and risk management frameworks ensure that we continue to set industry-leading standards in responsible investment.

Looking ahead, ORIT will continue to strengthen its contribution to the net zero transition by optimising its renewable energy portfolio and deepening its commitment to biodiversity and circularity across its assets. By maintaining our focus on sustainability and active stewardship, we are confident that ORIT will continue to deliver long-term value for both investors and society.

Sincerely,

Philip Austin MBE

Chair

ESG & Impact

As at 31 December 2024

ESG & Impact Strategy

ORIT is an impact fund with a core impact objective to accelerate the transition to net zero through its investments, building and operating a diversified portfolio of Renewable Energy Assets.

ORIT enables individuals and institutions to engage with the energy transition. The renewable energy generated from ORIT's portfolio of assets supports the transition to net zero by replacing unsustainable energy sources with clean power. This intended outcome is the Company's core impact objective.

The ESG & Impact Strategy considers all of ORIT's culture, values and activities through three lenses: **Performance, Planet** and **People** – to ensure that ORIT's activities integrate ESG risks and bring to life additional impact opportunities.

For a more in-depth understanding of ORIT's ESG & Impact Strategy, encompassing definitions of ESG and Impact, along with detailed insights into four impact themes (Stakeholder engagement, Equality and wellbeing, Innovation, and Sustainable momentum), please refer to the separately published ESG & Impact Strategy.

Stewardship and Engagement

The Investment Manager manages ORIT's investments in line with its Engagement and Stewardship Policy. Where ORIT has 100% ownership stakes, the Investment Manager has direct control of the underlying assets, usually through directorship services. As well as decision making oversight, the Investment Manager carries out service reviews on each material third-party service provider. In circumstances where ORIT does not hold a controlling interest in the relevant Investee Company, the Investment Manager will secure shareholder rights through contractual and other arrangements, to, inter alia, ensure that the renewable energy asset or portfolio company is operated and managed in a manner that is consistent with ORIT's investment and ESG Policy. The Investment Manager will always take up portfolio investment Board seats, attend Board meetings and will directly use its influence to monitor and support investee companies on relevant matters to galvanise other shareholders in line with ORIT's ESG Policies.

ORIT aims for investment-specific active stewardship, regardless of ownership percentage. The Company consistently exercises shareholder rights, overseeing approval and reserved matters. The ORIT Board receives regular reports on investee performance, including environmental and social issues. The Investment Manager collaborates on industry risks to drive positive stewardship outcomes with various stakeholders.

The initiatives and case studies presented in this report provide examples of the application of the Engagement and Stewardship Policy.

The Investment Manager's full Engagement and Stewardship Policy can be viewed [here](#).



Performance

Impact Objective: Build and operate a diversified portfolio of Renewable Energy Assets, mitigating the risk of losses through robust governance structures, rigorous due diligence, risk analysis and asset optimisation activities to deliver investment return resilience and the maximum amount of green energy.

£1,029m

**Total value of sustainable investments
– 100% investments committed into
renewables¹**
(2023: £1,127m)

41

Assets
(2023: 37 assets)

1,389 GWh

**Potential annual renewable energy
generation, 818 GWh of which has and will
be additional generation from construction
assets**
(2023: 1,569 GWh)

1,240 GWh

Renewable energy generated in the year²
(2023: 1,161 GWh)³

100%

**Of investments adhere to ORIT's ESG Policy
and all transactions in the year met ORIT's
minimum ESG matrix threshold**
(2023: 100%)

UN SDGs⁴



¹ Total asset value including total debt and equity commitments.

² 1,240 GWh considers both actual (1,143 GWh) and compensated (97 GWh) generation.

³ This figure differs from the published figure of 1,110 GWh presented in the December 2023 Annual Report as 1,161 GWh includes compensated generation from curtailment, making for a like-for-like comparison with the 2024 figure of 1,240 GWh.

⁴ More detail on how ORIT has contributed to these UN SDGs is included in the separately published ORIT ESG & Impact Report.



Delivering the investment objective

The Board views the ESG & Impact Strategy as integral to the delivery of the core investment objective, and not as a cost to the Company. ESG processes and policies are a prudent risk management tool that improve the financial performance of the Company while reducing risks. The ultimate aim is to increase capacity to produce green power and maximise the green electrons produced by the operational portfolio.

Integration Into the Investment Cycle

Every investment the Company makes is assessed against its Performance, Planet and People framework through an ESG scoring matrix. This ensures that its investments adhere to ORIT's ESG Policy and minimum scoring threshold for investment approval.

All transactions in the year met ORIT's minimum ESG matrix threshold.

Regulatory Disclosures

The TCFD disclosures can be found in the Risk and Risk Management Statement section of the Annual Report.

ORIT is classified as an Article 9 product under the EU Sustainable Finance Disclosure Regulation ("SFDR") regulation. Please refer to [page 108](#) of the Annual Report and to the ORIT website for ORIT's SFDR disclosures.

ORIT remains committed to transparent ESG reporting and aligning with leading sustainability disclosure frameworks. This year, ORIT completed its first Carbon Disclosure Project ("CDP") disclosure and achieved a "B" score—the highest possible for an SME (a small and medium-sized enterprise). This recognition underscores ORIT's proactive approach to climate-related risk management and emissions reporting.

The Investment Manager is keeping up with recent developments in new regulatory frameworks aimed at increasing transparency in environmental and social factors. This includes the Taskforce for Nature-related Financial Disclosures ("TNFD") and the UK's Sustainable Disclosure Requirements ("SDR").

Recognising the complexity and the depth of insight required to meet the TNFD standards, the Investment Manager has concentrated on understanding both direct operational dependencies and those within ORIT's supply chain. Initial analysis indicates that primary dependencies likely to significantly impact the portfolio's direct operations are integrated into ORIT's current risk management frameworks (refer to [ORIT 2023 Interim Report](#) page 37). Furthermore, a summary of the Investment Manager's analysis regarding supply chain dependencies is detailed in the [2023 ESG & Impact Report](#). This foundational phase of research is essential for establishing a solid base for comprehensive TNFD disclosure.

The Company supports "anti-greenwashing" efforts associated with the SDR however is not in scope for a label. This is because the Company is managed by an EU (Irish) AIFM, which falls outside the scope of the FCA's ESG rules.

Performance initiatives

Delivering investment performance is fundamental to the ESG & Impact Strategy, to supporting the transition to net zero, and to being an impact fund. Asset optimisation initiatives and robust ESG risk management aim to improve financial resilience and overall performance of the Company, maximising the amount of green electricity the Company generates.

The Investment Manager works with key partners to mitigate production risks and maximise performance of ORIT's operational assets. Examples of projects that contributed to this objective are laid out in the below case study.



Case Study: Driving Performance Through Stakeholder Engagement & Innovation



Innovation

The Investment Manager, on behalf of ORIT, delivers performance by making the right decisions at the right time. Through active stakeholder engagement and innovation, risks are mitigated, asset performance is optimised, and clean energy generation is maximised. Whether negotiating down grid outages or deploying smarter technology, this approach ensures resilient returns and energy security.

Strategic stakeholder engagement



Stakeholder Engagement

A planned grid outage was set to cause a 21 GWh loss in generation at Cumberhead wind farm, equating to an estimated revenue loss of £1.37 million. Through early engagement and negotiations, the Investment Manager reduced the impact to 8 GWh, saving £850k without incurring additional costs.

Similarly, Crossdykes faced a 40-day planned grid outage, which would have materially impacted generation. By working closely with SP Energy Networks, the Investment Manager successfully negotiated an innovative resolution that reduced the outage duration to just 6 days, preserving operational efficiency and an estimated £1.2 million in revenue.

Innovation

The Investment Manager continues to deploy innovative solutions across the UK solar portfolio, enhancing asset performance and resilience.

Inverters at three sites, accounting for 45% of total generation capacity across the UK solar portfolio, if become overheated could risk underperformance and failure.

At three solar sites, overheating inverters risked underperformance and potential failures. A custom-built data model was used to spot unusual inverter behaviour, allowing for a controlled approach that reduced failures. To improve this further, a new on-site control function now allows real-time remote adjustments, removing the need for manual intervention and ensuring smoother operations. Additionally, 141 inverter cooling systems were upgraded, leading to a 70% increase in electrical output across affected modules.

To address a shortage of inverter transistors (“IGBTs”), the Investment Manager introduced a refurbishment programme, keeping operations running despite supply chain challenges. This approach is expected to cut downtime costs by around 67% compared to sourcing new parts, while also extending inverter lifespan.

At Chisbon, new technology called KrakenFlex Gateway boxes were installed to automate how the site responds to curtailment opportunities that secure additional revenues, reducing the need for manual work. This makes operations faster, more efficient, and helps maximise revenue from grid services. By removing the need for costly manual interventions—currently £196 per adjustment—this upgrade is expected to cut costs and make future scaling easier without adding extra workload.



Impact tracker



Who?

Crossdykes & Cumberhead wind farm

UK Solar Portfolio



How much?

£2.05m revenue saved across Cumberhead and Crossdykes

45% of UK solar generation capacity safeguarded; 141 upgrades to cooling systems

67% reduction in business interruption costs

£196 per manual intervention cost reduction



What?

Proactive engagement and negotiations to minimise grid outage impact

Real-time remote curtailment deployed and inverter cooling systems upgraded to improve efficiency and reliability

Refurbished IGBT transistors deployed to mitigate supply shortages and extend inverter lifespan.

KrakenFlex Gateway boxes installed to automate dispatch



Impact Theme



Innovation



Stakeholder Engagement



Chisbon solar farm



UN SDG specific contributions for Performance

7 AFFORDABLE AND CLEAN ENERGY



7: Affordable and Clean Energy

7.2 & 7.3 – Increase the share of renewable energy and improve energy efficiency:

Optimising renewable energy generation through smarter technology, reducing grid outage impacts, and enhancing inverter performance to minimise downtime and improve asset resilience.

9 INDUSTRY, INNOVATION AND INFRASTRUCTURE



9: Industry, Innovation, and Infrastructure

9.1, 9.4 & 9.5 – Develop quality, reliable, sustainable infrastructure, upgrade infrastructure to be more sustainable, and enhance scientific research and innovation:

Engagement, smart inverter control, predictive data modelling, and automated grid response improve renewable infrastructure resilience, efficiency, and sustainability, while KrakenFlex Gateway and inverter refurbishment drive technological innovation in energy management.

13 CLIMATE ACTION



13: Climate Action

13.1 – Strengthen resilience to climate-related disasters:

Proactive asset optimisation and climate risk due diligence and mitigation ensure reliable clean energy generation, while strategic performance management supports decarbonisation and energy transition goals.



Planet

Impact Objective: Consider environmental factors to mitigate risks associated with the construction and operation of assets, enhancing environmental potential where possible.

383k

Estimated annual equivalent tCO₂e avoided once fully operational⁵
(2023: 400k)

6.42t

CO₂e per MW estimated carbon intensity (direct and indirect)
(2023: 55.47)

888t

Worth of carbon purchased in Pending Issuance Units
(2023: 553t)

99.4%

Investments qualify as sustainable in line with EU Taxonomy
(2023: 100%)

91%

Generating sites on renewable import tariffs⁶
(2023: 93%)

0

Environmental incidents
(2023: 4)

UN SDGs



1.9m

Equivalent new trees required to avoid same carbon⁵
(2023: 2.0m)

195k

Equivalent cars off the road required to avoid same carbon⁵
(2023: 203k)

Based on actual annual renewable energy generation during the year

297k

Equivalent tCO₂e avoided
(2023: 302k)

1.5m

Equivalent new trees required to avoid same carbon
(2023: 1.5m)

151k

Equivalent cars off the road required to avoid same carbon
(2023: 153k)

⁵ Based on potential annual renewable energy generation once fully operational. As no assets were in construction as at 31 December 2024, this metric is representative of the whole operational portfolio.

⁶ As at 31 December 2024.



Maximising ORIT's positive environmental impact

ORIT recognises the critical role that renewable energy plays in meeting net zero emissions targets, with an inherently positive impact on the environment. This is demonstrated by the equivalent tCO₂e avoided by the renewable energy generated during the year.

Figures for carbon avoided use country-specific grid intensity factors, which are updated on a periodic basis to reflect the changing composition of the grid's energy sources.

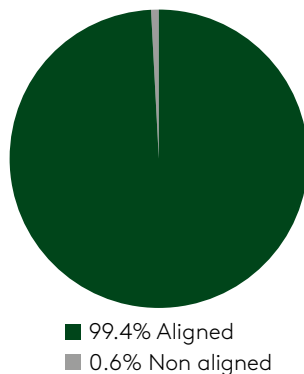
ORIT's LSE's Green Economy⁷ demonstrates the Company significant contribution to the transition to a zero-carbon economy.

The Investment Manager can also confirm that 99.4% of ORIT's assets directly contribute to or enable climate change mitigation in line with the EU Taxonomy criteria (see Figure 1). The EU Taxonomy is a classification system for sustainable activities designed to help investors identify "green" environmentally friendly activities. This is aimed to demonstrate investments that are sustainable; for example ones that make a substantial contribution to climate change mitigation, while avoiding significant harm to other environmental objectives and complying with minimum safeguarding standards. This calculation was based on the full market value of the investee companies. Specifically, the percentage of each company's turnover associated with activities aligned to the EU Taxonomy was used to determine the proportion of its market value considered as aligned.

ORIT has adjusted its EU Taxonomy alignment target from 100% to 85% to account for any potential cash holdings that are not instantly accessible and consequently may be considered ineligible for EU Taxonomy alignment (following a clarification made by the EU Commission in July 2024) and for investments that may be ineligible, partially eligible, or not yet aligned due to unmet "do no significant harm" ("DNSH") criteria. For example, small development platforms with limited employees may lack required policies or processes to meet DNSH but will implement them over time. Additionally, some development platforms providing certain development services on renewable energy projects may align with sustainability objectives but remain ineligible under the EU Taxonomy.

More information on the Investment Manager's screening and assessment approach can be found in ORIT's [ESG & Impact Strategy](#).

Figure 1: EU Taxonomy alignment overview:



There were 3 environmental incidents recorded but these were not reportable due to how minor they were. One of the recorded incidents was in relation to very small amounts of oil/fuel leakage. Two of the recorded incidents were related to fly tipping and tagging near the assets. The required mitigation response was deployed and the events had no lasting negative impacts.

Carbon measurement and reporting

In 2024 the Investment Manager on behalf of the Company engaged with Altruistiq to help calculate and validate the Greenhouse Gas ("GHG") emissions footprint for ORIT. ORIT has quantified and reported organisational GHG emissions in line with the iCI and ERM Greenhouse Gas Accounting and Reporting Guide for the Private Equity Sector (2022). This methodology was developed to complement both the World Resources Institute's Greenhouse Gas Protocol Standards and the Partnership for Carbon Accounting Financials' Standard for the financial industry. This approach consolidates the organisational boundary according to the equity control approach. For more information on the carbon footprint methodology and definitions for terms used in this section, please refer to ORIT's [ESG & Impact Strategy](#).

⁷ The Green Economy Mark identifies London-listed companies and funds that generate between 50% and 100% of total annual revenues from products and services that contribute to the global green economy.



The Company, as a legal entity, has no direct employees, owned or leased real estate, or direct assets, and therefore the Company has no Scope 1 or 2 emissions. Scope 1 and 2 emissions for the portfolio arise mainly from on-site fuel combustion and imported electricity. The majority of emissions are Scope 3. For the portfolio, Scope 3 emissions largely stem from purchased goods and services alongside indirect activities like waste management, transportation, and travel. For the Company, they relate to purchased services acquired, such as legal and investment management services.

Scope	Portfolio Emissions (tCO ₂ e)	Company Emissions (tCO ₂ e)	Total Emissions (tCO ₂ e)	% of Total
1 – Direct Emissions	33.2	0	33.2	0.6
2 – Indirect Emissions (market-based)⁸	854.1	0	854.1	15.6
3 – Indirect Emissions	4,437.0	137.7	4,574.7	83.8
- Fuel & Energy Related Activities	355.4	0	355.4	6.5
- Purchased Goods and Services	3,420.4	137.7	3,558.2	65.1
- Travel and Transport ⁹	637.6	0	637.6	11.7
- Waste	23.4	0	23.4	0.4
Total	5,324.2	137.7	5,462.0	

Note: Totals may not add up due to rounding

ORIT’s overall carbon intensity was calculated to be **6.42 tCO₂e per MW**.

ORIT’s weighted average carbon intensity (“WACI”) for the year was calculated to be **7.84 tCO₂e/£m revenue¹⁰**.

The following table separates ORIT’s carbon emissions into UK and non-UK based emissions in line with the Streamlined Energy and Carbon Reporting framework (“SECR”).

	2024		2023		2022		2021	
	UK Emissions	Non-UK Emissions	UK Emissions	Non-UK Emissions	UK Emissions	Non-UK Emissions	UK Emissions	Non-UK Emissions
Scope 1 tCO ₂ e	30.7	2.5	218.0	5.4	0.0	0.6	0.0	0.0
Scope 2 Market based tCO ₂ e	116.4	737.7	126.5	602.5	0	885.2	0.0	5.0
Location based tCO ₂ e	424.8	485.7	342.1	471.3	190.4	836.5	192.2	62.4
Energy consumption MWh	2,120.6	3,516.3	11,221.7	2,550.1	1,568.4	2,724.9	905.2	1,150.5
Scope 3 tCO ₂ e	2,532.6	1,904.3	29,262.2	6,749.9	5,706.4	1,261.4	710.9	1,500.7

⁸ Using a location-based approach, ORIT’s portfolio Scope 2 emissions equate to 910.5 tCO₂e.

⁹ This category includes upstream transportation and distribution, employee commuting, business travel and contractor travel.

¹⁰ A market-based approach as used to calculate the WACI. The WACI using a location-based approach is equal to 10.07 tCO₂e/£m revenue.



The Investment Manager has disclosed the different categories of data points used to calculate the Company’s carbon footprint to transparently convey both the quality and accuracy of the carbon footprint reported. The table below shows the split between the defined¹¹ categories of data:

SCOPE	Real	Estimate	Proxy
Total	68.6%	31.3%	0.1%
Scope 1	47.5%	52.5%	0.0%
Scope 2	86.3%	13.7%	0.0%
Scope 1 & 2	84.9%	15.1%	0.0%
Scope 3	65.5%	34.4%	0.2%

The Investment Manager refined its data quality methodology to align with industry practice. Instead of reporting the percentage of data points classified as real, estimated, or proxy, the updated approach reflects the percentage of total emissions derived from each data type, broken down by scope. This provides a more accurate and meaningful assessment of data quality, weighted by emissions impact.

The Investment Manager has high confidence in over 99% of reported emissions, as they are based on either real data (68.6%) or high-quality estimates (31.3%) provided by asset managers or investee companies using robust assumptions. Proxy data (0.1%), estimated by the Investment Manager, is minimal. It is encouraging to see strong data quality across Scope 3, with 65.5% real data, which is notably high given the complexity of value chain emissions. As expected, data quality is even higher for direct emissions, with 84.9% real data across Scope 1 and 2.

Carbon reduction

The Company’s aim is to reduce its emissions through stakeholder engagement and proactive management of its assets. As the Company improves data quality, especially for assets in construction, the Investment Manager will continue to explore opportunities to reduce emissions associated with embodied carbon.

The carbon intensity metric based on the MW capacity of the portfolio has decreased significantly since 2023, reflecting a sharp drop in Scope 3 emissions, particularly in the purchased goods and services category. In 2023, most emissions came from construction-related services and purchases for Cumberhead Wind Farm and Breach Solar Farm. Now that these assets are operational, their purchased goods and services associated emissions have fallen significantly, contributing to the overall reduction in portfolio carbon intensity.

2024	2023	2022	2021
6.42 tCO ₂ e/MW	55.47 tCO ₂ e/MW	8.48 tCO ₂ e/MW	5.23 tCO ₂ e/MW

¹¹ Please refer to [ORIT’s ESG & Impact Strategy](#) for definitions of these terms.



Carbon offsetting



Whilst carbon reduction remains the priority in ORIT's carbon strategy, ORIT does still commit to offsetting any residual direct emissions relating to its Scope 1 and 2 emissions.

Last year, ORIT purchased 553 tonnes worth of carbon in "Pending Issuance Units"¹². These units have been secured both to future-proof ORIT's carbon units in light of increasing prices and low availability of "Woodland Carbon Units"¹³ and also to support new woodland creation in the UK. The Investment Manager purchased an additional 888 PIUs to cover the emissions relating to ORIT's 2024 Scope 1 and 2 emissions.

Supporting the planting of new UK woodland helps plant new trees today, but these woodlands do not deliver "offset" credits immediately. Only once the woodland biomass has grown sufficiently will its carbon credits be verified and converted from ex-ante PIUs to ex-post WCUs. Only then can only then be used as official offsets.

In recognition of the carbon impact of ORIT's operations, ORIT has decided to invest in a UK woodland carbon project that will capture 1,841 tonnes worth of CO₂ over the next 30 years. The units are derived from a "Forest Carbon" project in Acheilidh, Tain, Highlands. The new native broadleaf woodland is expected to deliver all 1,841 tonnes of carbon (associated with ORIT's 2023 and 2024 Scope 1 and 2 emissions) by 2055 and 75% of its carbon units by 2050.

The Board will reassess if the purchase of additional PIUs will be necessary on a year-to-year basis.

The growing trees will also provide wider co-benefits beyond climate mitigation, including water quality improvements, habitat creation, employment, and cleaner air. Through ORIT's support for UK woodland creation, the Company is helping the country to meet its long-term international climate targets in a way that also benefits wider society and nature.



¹² A Pending Issuance Unit ("PIU") is effectively a 'promise to deliver' a Woodland Carbon Unit in future, based on predicted sequestration. It is not 'guaranteed' and cannot be used to report against UK-based emissions until verified. However, it allows companies to plan to compensate for future emissions or make credible statements in support of woodland creation.

¹³ A Woodland Carbon Unit ("WCU") is a tonne of CO₂e which has been sequestered in a Woodland Carbon Code-verified woodland. It has been independently verified, is guaranteed to be there, and can be used by companies to report against emissions or to use in claims of carbon neutrality or Net Zero emissions.



Planet initiatives

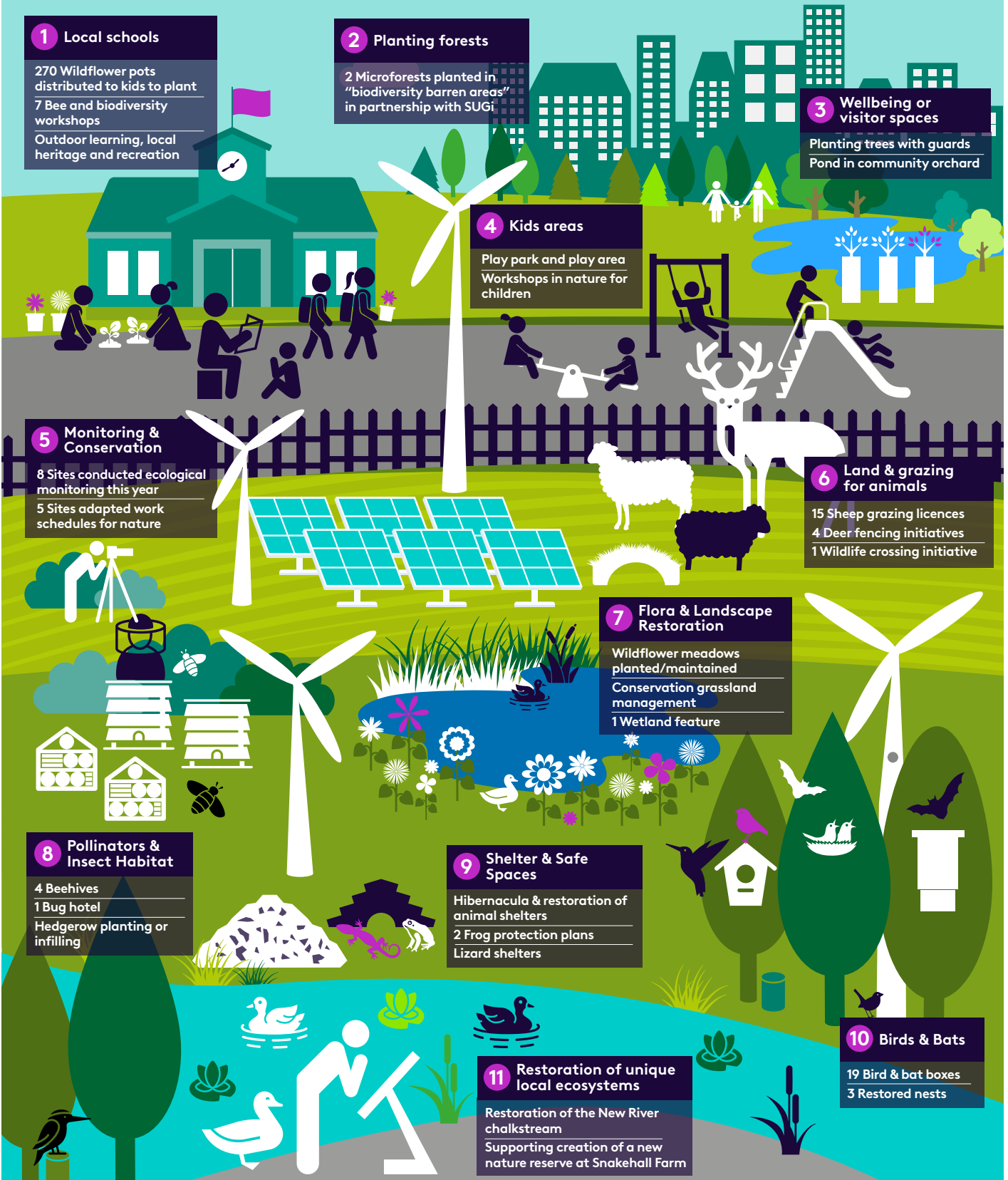
Maximising the Company’s positive contribution to the environment is core to the ESG & Impact Strategy. Planet initiatives contribute to solutions to combat climate change. Projects undertaken in the year are outlined in the table below.

Project	Outcome
<p>Promoting Biodiversity on and beyond sites: ORIT has actively promoted biodiversity within and outside of its operational sites through strategic initiatives, collaborations, and habitat creation.</p>	<p>A range of biodiversity initiatives have been implemented, including the creation of ponds, wildflower meadows, and targeted ecological surveys to enhance and monitor biodiversity within sites. A number of local and regional partnerships have enhanced local biodiversity features and community spaces outside of site borders. These efforts contribute to improved ecosystem resilience.</p> <p>See case study for more information.</p> <p> Stakeholder Engagement</p>
<p>Circular Economy in Asset Management: ORIT’s Investment Manager has now adopted a formal Circularity Policy, designed to integrate circularity into asset management practices across the portfolio.</p>	<p>The policy is structured to formalise and prioritise circular practices and decision-making, particularly within solar and wind projects. It focuses on three core objectives: 1. Reduce renewables lifecycle consumption; 2. Minimise renewables waste by promoting reuse and recycling; 3. Engage stakeholders on matters of circularity.</p> <p> Innovation</p>
<p>Rewilding: Continued partnership with SUGi, an organisation that “brings people closer to nature” by planting richly biodiverse pocket forests.</p>	<p>ORIT has now funded a total of 8 forests, with the addition of 2 new forests in Ireland, bringing the total number of trees planted to 13,125.</p> <p>More information on ORIT’s partnership can be found here.</p> <p> Sustainable Momentum</p> <p> Stakeholder Management</p> <p> Innovation</p>
<p>BizGive: ORIT continues to fund initiatives identified through BizGive, that drive climate-action.</p>	<p>ORIT has funded five initiatives, two of which are specifically climate-focused. ORIT supported Ecocode STEM workshops to empower young girls to code for sustainability. ORIT also supported a Climate Action Scorecards initiative to provide independent transparent evaluation of councils’ efforts across various climate actions.</p> <p>See case study for more information.</p> <p> Stakeholder Management</p> <p> Equality & Wellbeing</p> <p> Innovation</p>

Case Study: Promoting Biodiversity Across and Around ORIT's Renewable Energy Sites

ORIT actively enhances biodiversity across its sites and surrounding communities by embedding nature-positive practices into its renewable energy projects. Through a combination of on-site initiatives, local biodiversity efforts, and community engagement, ORIT aims to create lasting environmental benefits while integrating renewable infrastructure with the natural landscape.

Key initiatives include the construction of a pond at Ottringham, the planting and maintenance of grasslands and wildflower meadows, and the establishment of two new forests in Ireland. ORIT also supports local biodiversity and outdoor community spaces, such as its contributions to initiatives near Breach Solar Farm, which have helped restore a river, support a nature reserve, and develop community park areas.





Case Study: Driving Community-Led Climate Action Through Education, Innovation, and Policy



Over the past four years, ORIT has partnered with BizGive to identify and support charities and organisations aligned with ORIT’s impact objectives. In 2024, ORIT provided £49,908 to five projects to reduce carbon emissions, improve energy efficiency, and develop the skills needed for a greener future. As the world accelerates its transition to Net Zero, initiatives targeting schools, households, and local governments are playing a critical role in wholistically building sustainable communities. This case study explores the five initiatives that ORIT supported in 2024.



Schools & Education

Energy Sparks - £10,000, 1,500 students benefited

Energy Sparks is an interactive energy management and education platform designed to help UK schools track, reduce, and optimise their energy use. Schools make up over half of local authority carbon emissions, yet staff often lack the time and expertise to manage energy consumption effectively.

With ORIT’s support, Energy Sparks will provide real-time energy data to 20 schools in the UK. The initiative also gives the schools personalised recommendations, and training for school staff and students. Schools using the platform typically achieve a 10% energy reduction within a year, lowering bills while integrating climate education into the curriculum.

EcoCode STEM - £10,000, 600 students benefited

EcoCode STEM integrates coding and climate action, equipping young people—particularly girls—with the skills to develop sustainable solutions. Across eight schools, students will use the micro:bit, a small programmable device, to create engineering innovations such as renewable energy systems, early warning sensors, and energy-saving technologies.

This initiative enhances digital literacy while demonstrating practical applications of coding in tackling environmental challenges. Through teacher training and curriculum integration, EcoCode STEM is ensuring that climate-focused computing skills become a mainstream part of STEM education.

Households & Communities

Durham Energy Friends - £10,000, 200 households benefited

Durham Energy Friends is an innovative community-led programme that provides free energy efficiency advice and fuel debt support to households experiencing fuel poverty in Rural County Durham.

Trained volunteers offer home visits, digital guidance via the Fairer Warmth App, and drop-in sessions to help households lower energy bills, access grants, and adopt simple efficiency measures. The initiative is expected to support 200 households, save £50,000 annually and reduce CO₂ emissions by 250 tonnes.

Community Coproduction Toward Net Zero Living - £10,000, estimated 2,300 households benefited

Blackpool has one of the highest levels of fuel poverty in the UK, with 20.2% of households struggling with energy bills. Blackpool Council’s “Eco-Hub” provides one-to-one energy advice, home assessments, and practical support for residents. With ORIT’s backing, its scaling its impact through free online educational materials including videos, mini-guide books, and peer-led storytelling resources. These will help residents across Blackpool and beyond to understand, use, and benefit from home decarbonisation solutions—reducing both emissions and financial hardship.

Local Government & Policy

Council Climate Action Scorecards - £9,908, 150+ council areas benefited

Local authorities play a crucial role in achieving Net Zero, yet progress varies significantly across the UK. ORIT is supporting the “Council Climate Action Scorecards” initiative, an independent evaluation of councils’ efforts across 94 climate actions.



Through a volunteer-led assessment process, the scorecards benchmark councils on policy, renewable energy adoption, community engagement, and net-zero strategies. Councils receive data-driven insights, recommendations, and public accountability, empowering local leaders, residents, and campaigners to drive faster, more equitable climate action.

By highlighting best practices and gaps, this initiative is strengthening local governance, ensuring councils play a proactive role in tackling climate change.

Conclusion

These initiatives demonstrate how targeted, sector-specific interventions can create meaningful climate action. By educating young people, supporting communities, and supporting local governments in meeting their targets, these programmes are shaping a more resilient, energy-efficient, and sustainable world.

Impact tracker



Who?

Schools and the students across the UK

Households across Durham and Blackpool facing energy poverty

Local councils with climate commitments across the UK



How much?

£49,908 donated

4,763 direct beneficiaries

2,100 of which are students

38,660 indirect beneficiaries



What?

2,100 students engaging on STEM subjects and solutions to environmental issues

2,533 households to be advised on energy efficiency

Over 150 councils to be graded on their environmental actions



Impact Theme



Equality and Wellbeing



Stakeholder Engagement



Case Study: Inspiring Young Climate Leaders

With ORIT's support, the Climate Leadership Academy is helping young people take meaningful action on climate and environmental issues in their communities. The programme, delivered by Citizens UK provides hands-on leadership training, giving young people in West London and Peterborough the confidence and skills to identify local environmental challenges and work together to find solutions. By working closely with local schools and organisations, young people are leading projects that create lasting benefits for their communities and the environment.



Stakeholder Engagement

West London: Reducing litter and saving energy

At Old Oak Primary School, eight Climate Champions (ages 9-11) engaged 200 peers to identify key concerns: littered streets and home energy savings.

What they did:

- Consulted Keep Britain Tidy for expert advice and reached out to local councillors to discuss potential solutions and improvements.
- Explored simple ways for families to reduce energy use



Innovation

Peterborough: Greener spaces and better transport

More than 60 young people across three schools worked to ensure new housing developments included more green space.

- They surveyed 1,500 students and worked with local developers (AEPG) to highlight the need for more parks and play areas.
- As a result, 18 acres of green space will now be included in a new development—3.5 acres more than originally planned.

“This collaboration highlights the power of collective action. By centring the voices of children and young families, Peterborough Citizens has directly influenced a development that will have a lasting positive impact on the Peterborough community”. – Ashley Butterfield, AEPG

They also identified that many families struggle to reach Nene Park, a large outdoor space, because of limited public transport options.

- They worked together with the Nene Park Trust and met with Mayor Nik Johnson, who agreed that adding a new bus stop would improve access for local families.

Impact tracker



Who?

33 young leaders developing skills in climate action

5 civil society institutions (schools) engaged in climate campaigns.



How much?

325 young people participating in climate campaigning

2 community wins: more green space and better transport access



What?

Community-led climate projects in West London & Peterborough

Enabled young people to take action on real issues that they care about and win change in their community.



Impact Theme

 Stakeholder Engagement



Innovation



UN SDG Specific Contributions For Planet

4 QUALITY EDUCATION



4: Quality Education

4.1 & 4.7 – Ensure all learners acquire relevant skills for employment and entrepreneurship and knowledge for sustainable development: EcoCode STEM teaches coding for sustainability, while Energy Sparks and the Climate Leadership Academy embed sustainability education, energy awareness, and leadership skills to empower young people in driving climate initiatives.

7 AFFORDABLE AND CLEAN ENERGY



7: Affordable and Clean Energy

7.2, 7.A, 7.1 & 7.3 – Increase renewable energy in the mix, stimulate investments in the renewable sector, ensure universal access to affordable, reliable energy, and improve energy efficiency:

ORIT is expanding renewable energy capacity by providing clean energy to the grid and creating investment opportunities in the sector. More energy capacity is also in the pipeline with construction projects. Further, through BizGive, ORIT enhances energy efficiency in communities and targets fuel poverty.

10 REDUCED INEQUALITIES



10: Reduced Inequalities

10.2 – Empower and promote social, economic, and political inclusion: Initiatives reduce fuel poverty and ensure equitable access to green technologies for vulnerable households, while climate leadership programmes equip young people from diverse backgrounds with the skills and confidence to engage in advocacy and decision-making.

13 CLIMATE ACTION



13: Climate Action

13.1 & 13.3 – Strengthen climate resilience & improve education on climate action:

Energy efficiency initiatives enhance resilience against price volatility and climate impacts, the Council Climate Action Scorecards hold local governments accountable for net-zero strategies, and the Climate Leadership Academy equips young people with the knowledge and skills to lead climate campaigns.

15 LIFE ON LAND



SDG 15: Life on Land

15.1 & 15.5 – Conserve ecosystems and take action to reduce the loss of biodiversity and degradation of habitats:

Restoration, conservation, and species monitoring initiatives through on-site biodiversity plans that go beyond planning requirements. Biodiverse pocket forests planted in partnership with SUGi to restore native biodiversity in urban areas and biodiversity-barren areas. Further support for local community biodiversity initiatives provided through dedicated funding.



People

Impact Objective: Evaluate social considerations to mitigate risks and promote a 'Just Transition' to clean energy.

13,261

People benefitting from social initiatives, of which 7,261 are students
(2023: 7,827 students)

4,763

Direct beneficiaries from the projects funded through the BizGive platform
(2023: 7,849)

0

RIDDORS (or equivalent)
(2023: 0)

176

Estimated FTE jobs created
(2023: 169)

UN SDGs



Managing our impact on society

Investing in renewable energy has natural positive impacts on people and for the wider society by benefitting the economy. By channeling capital towards "homegrown renewables" ORIT is also contributing to energy security, preventing future energy crises resulting from reliance on unsustainable global fossil fuel markets.

It is also vital the Company mitigates any possible negative impacts and risks to people as the Company invests, constructs, and operates the portfolio of renewable assets. ORIT has clear policies and governance structures to achieve this. Some social factors that ORIT and the Investment Manager consider to be the most important during due diligence and ongoing monitoring of assets include:

- Health and safety
- Diversity and inclusion
- Promoting a Just Transition (workers, community and customers)

ORIT also supports initiatives that contribute to solutions to engage communities and promote a "Just Transition" to clean energy (see "People Initiatives" section below).



Health and safety approach

ORIT recognises its health and safety responsibilities and keeping people safe remains its highest priority. ORIT has put arrangements in place with its Investment Manager to ensure that health and safety risks are managed effectively.

The Investment Manager employs specialist HSE consultants and additionally has employed a Head of Health and Safety to ensure that health and safety procedures are embedded into its model of investing and managing assets.

This integration is achieved through:

- Technical Compliance Standards
- Contractor diligence and benchmarking
- Audits and ongoing oversight
- Data collection and continuous improvement

Even with minority stakes, performance is tracked through board meeting attendance. The Investment Manager monitors various accident and incident classifications, including those reportable to the UK Health & Safety Executive (“RIDDORs”) or equivalent local bodies. International incidents comparable to RIDDORs are flagged under the Investment Manager’s statutory reporting guidance to ensure a consistent approach wherever possible outside the UK. HSE incidents are investigated by the in-house Asset Management Team and third-party HSE advisors. Root cause analysis, lessons learned, and necessary procedural changes are ensured.

RIDDORs	Lost time injuries (<7 days)	Near misses	Personal injuries	Minor equipment damage incidents
0	1	13	1 first aid	17

The organisation’s safety performance during the year has been positive, with no significant risks to highlight. All incidents were investigated, and appropriate actions were taken.



Diversity and inclusion

Equality and wellbeing are fundamental to ORIT’s impact ambitions. This is reflected in the Company’s policies and in the way that the Company operates externally, through understanding the approach that its third-party providers take to diversity and inclusion, and suggesting ways to improve this wherever possible.

The Investment Manager provides directors to the underlying subsidiary companies and ensures diversity is considered when appointing them.

Board	Investment Manager
<p>The Company’s Board is made up of a complementary mixture of social backgrounds, gender diversity and ethnicity. The Company’ complies with the FCA’s diversity targets on the representation of women and ethnic minorities:</p> <ul style="list-style-type: none"> • At least 40% of the board should be women. • At least one of the senior board positions or Senior Independent Director (“SID”) should be a woman. • At least one member of the board should be from an ethnic minority background excluding white ethnic groups (as set out in categories used by the Office for National Statistics). 	<p>The Investment Manager shares ORIT’s values and places diversity and inclusion at the heart of them, which is demonstrated through initiatives implemented. These initiatives include:</p> <ul style="list-style-type: none"> • Recruitment Enhancements: Established hiring guidelines and unconscious bias training; diversified candidate pools through broader job advertising and inclusive job descriptions. • Workplace Attractiveness: Updated parental leave policies for diverse family structures, increased fully paid paternity leave to four weeks complementing the shared parental leave policy which offers up to six months per parent; proactive monitoring of gender pay gaps. • Promotion Process Reforms: Revised promotion process for greater transparency and decision-making diversity at the team level. • Workplace Adjustments: Implemented necessary adjustments and encouraged open communication for supporting diverse workplace needs. • Focus on Neurodiversity: Adjusted the recruitment and interview process to be more inclusive; provided additional resources to support line managers in managing neurodiverse team members. • Internship Programmes: Successful participation in the Octopus Energy Equality Internship, leading to full-time roles for several interns. • Progress in gender representation: Female representation at the director level has increased by 6% (from 31% to 37%) since January, advancing towards the FCA and Energy Leader’s Coalition target of 40% by 2030.



Octopus Equality Internship interns visiting a wind farm in 2024



Promoting a “Just Transition”

A “Just Transition” refers to the equitable distribution of benefits in the shift to clean energy. ORIT actively engages with workers, local communities and customers, focusing on job creation, community benefits and fair access to green energy.

	Strategy’s aim:	Performance KPIs:
Workers – Job Creation	Enhance socio-economic distribution and equity by supporting the creation of decent jobs through ORIT’s partners and subcontractors. This is achieved by their commitment to adhere to standards of equal opportunities, workplace best practices, diversity, and inclusion, coupled with a focus on promoting local employment opportunities.	<ul style="list-style-type: none"> ● 176 estimated FTE jobs supported ● 12% local
Community – Engagement, Voice and Benefit	Empower local communities by establishing avenues for benefits such as through community benefit schemes, educational engagement with local schools via workshops and site visits, and support of local charities. As ORIT’s portfolio expands, these impact partnerships are designed to create a more significant and lasting impact across a diverse range of beneficiaries. Applicability of community initiatives will be determined on a portfolio-by-portfolio basis. Proactively engaging with communities and stakeholders from the outset, ORIT aims to secure social license for its investments, particularly in extending the operational lifespan of its assets.	<ul style="list-style-type: none"> ● Over £1m per year of community benefit funds ● 13,261 people (of which 7,261 are students) benefitting from social initiatives ● 4,763 direct beneficiaries from the projects funded through the BizGive platform.
Customers – Affordable Green Energy	Deliver societal benefits by supplying affordable, clean energy to the grid. This not only aims to lower energy bills but also to enhance energy security in regions with ORIT’s assets.	<ul style="list-style-type: none"> ● 284,247 equivalent number of homes powered by ORIT’s assets.¹⁴

People initiatives

Alongside keeping people safe, ORIT considers its potential impact on people. People initiatives contribute to solutions to engage communities and promote a “Just Transition” to clean energy.

ORIT exhibits a variety of social considerations across its assets and beyond, utilising the experience and approach developed by the Investment Manager to maximise benefits.

¹⁴ Metric based on actual production generated by ORIT’s assets during the year.



Project	Outcome
<p>Community Benefit Funds: Community benefits funds are in place across a number of ORIT’s sites.</p>	<p>Over £1m committed every year to local communities to address and support local needs and priorities.</p> <p>See case study for more information.</p> <p> Equality & Wellbeing</p>
<p>Local Community Education Initiatives: ORIT continues its partnership with Earth Energy Education and the Good Bee Company to deliver school visits, workshops and webinars.</p>	<p>3 school visits, 10 workshops and 1 online career webinar delivered to schools near ORIT’s UK solar sites in partnership with Earth Energy education. 270 Wildflower growing pots delivered to 4 schools and bee and biodiversity workshops delivered to 3 schools near Chisbon Solar farm in partnership with the Good Bee Company.</p> <p>See ORIT’s website for partnership videos.</p> <p> Stakeholder Management</p> <p> Equality & Wellbeing</p>
<p>Green Skills training for the Renewable Workforce: ORIT has played a key role in launching Generation’s new Solar Installer training pilots in both the UK and Ireland.</p>	<p>Solar Installer bootcamp pilots have successfully upskilled 30 learners (12 in London, 18 in Dublin) from diverse backgrounds, many of whom face barriers to employment. The pilots, delivered through a hybrid learning model, resulted in strong job placement rates, with structured six-month placements now underway.</p> <p>See case study for more information.</p> <p> Equality & Wellbeing</p> <p> Innovation</p>
<p>Virtual reality training: ORIT has funded the purchase of 40 VR headsets to use to upskill individuals looking to enter the offshore and hydrogen sector.</p>	<p>Developed in partnership with Energy Skills Scotland, the programme provides a realistic offshore wind turbine experience, featuring built-in fault scenarios and three training levels. The headsets also include an interactive walk-through of a hydrogen refuelling station, enhancing industry knowledge and hands-on learning.</p> <p> Innovation</p>
<p>Just Transition Through BizGive Initiatives: further collaboration, engagement and impact, aligned to the UN’s SDG framework and ORIT’s impact objectives.</p>	<p>Through its Impact Partner BizGive, ORIT has funded five initiatives, three of which are community-focused. ORIT provided £30,000 to Energy Sparks to help UK schools reduce energy waste and costs through data, Durham Energy Friends to providing free energy efficiency advice and fuel debt support to vulnerable households, and Community Coproduction Toward Net Zero Living to support energy advice initiatives in fuel-poor areas.</p> <p> Equality & Wellbeing</p> <p> Stakeholder Management</p>

Earth Energy Education students visit ORIT sites.





Case Study: Unlocking Benefits in Ireland



ORIT’s investment into the 241 MW solar portfolio in Ireland will power over 45,500 homes, cutting annual carbon emissions by 67,400 tonnes—equivalent to taking 34,200 cars off the road. This investment brings Ireland closer to its ambitious energy transition goal of 80% renewable electricity goal by 2030¹⁵. However, large-scale transitions come with challenges, and the benefits are not always evenly shared. ORIT’s ESG and Impact Strategy recognises this reality and seeks to minimise uneven distribution as much as possible, while also balancing the critical need to scale renewable energy. In Ireland, ORIT has worked to extend the positive impact of its investment beyond clean power generation – creating opportunities for local communities, the environment and workers.

A dedicated €360,000 Community Benefit Fund has been set up in line with Renewable Energy Directive guidelines. These guidelines promote transparent governance, equitable resource distribution, and alignment with national sustainability goals. A minimum of 40% of the fund is committed to not-for-profit community enterprises whose primary aim aligns with delivering the UN Sustainable Development Goals (“SDGs”), particularly Goals 4 (Quality Education), 7 (Affordable and Clean Energy), 11 (Sustainable Cities and Communities), and 13 (Climate Action). This ensures support for initiatives such as local education programmes, energy efficiency measures, renewable energy projects, just transition efforts, and climate resilience activities. The remaining funds are allocated through an annual application process, enabling clubs, societies, and similar not-for-profit organisations to propose impactful community initiatives. A community panel comprised of local representatives oversees fund allocation, ensuring that initiatives address the most pressing community needs and deliver the greatest local impact.

The latest round saw grants awarded for the installation of energy-efficient measures and solar panels on community sites, the provision of defibrillators, improvements to local accessibility, and support for local sporting and recreational initiatives. This fund reflects a strategic commitment to community resilience, environmental sustainability, and social inclusion, ensuring long-term benefits for local stakeholders.

In partnership with SUGi, ORIT is funding Miyawaki pocket forests in Irish schools—helping to rewild biodiversity-poor areas, restore native ecosystems, and bring back indigenous species that once thrived in these landscapes. These dense, fast-growing forests mimic natural woodland structures, improving soil health, boosting biodiversity, and creating long-term carbon sinks, all while engaging young people in environmental conservation.

- Dunboyne Forest at St. Peter’s College (Dublin): 600 native trees across 200m², providing hands-on climate education for 1,200 students while mitigating flood risks.
- St. Kevin’s Forest (Greystones): A 600-tree forest which will create much-needed shade and cleaner air in an area affected by rising temperatures.

These projects enhance biodiversity, improve air quality, and provide immersive learning experiences for students.

ORIT is also committed to create real economic opportunities through its renewable energy investments. Through the Generation Ireland Solar Installer Programme, individuals facing barriers to employment gain access to industry-leading training, unlocking new career paths in the green economy. This initiative builds a skilled workforce for Ireland’s energy transition. ORIT is funding Generation Ireland’s programme to equip participants with practical experience and recognised qualifications, preparing them for in-demand careers. Having launched the bootcamp on 9th December, this initiative has now trained 18 new solar installers—addressing key labour shortages. Graduates will gain essential skills in solar panel installation and maintenance, ensuring a pipeline of talent to support Ireland’s net zero ambitions. With employment in solar energy expected to grow by 11% by 2030¹⁶, this programme ensures local workers are ready to meet industry demand.

¹⁵ <https://www.iea.org/countries/ireland>

¹⁶ <https://assets.kpmg.com/content/dam/kpmg/ie/pdf/2024/10/ie-sunrise-solar-energy-economic-impacts-ireland-2.pdf>



ORIT recognises that the energy transition comes with challenges, but by embedding local partnerships and workforce development, it seeks to unlock opportunities and create wider benefits. With €360,000 committed to community programmes, 18 skilled workers trained, and over 1,200 trees planted, this investment reflects an ongoing effort to share benefits and drive broader social and economic progress—strengthening resilience, enhancing environmental restoration and expanding workforce opportunities.

Impact tracker



Who?

Irish households
Local communities
Local biodiversity
Local workforce facing barriers to employment



How much?

241 MW solar capacity; powering 45,500 homes
€360,000
Community Benefit Fund
1,200+ trees planted
18 solar installers trained



What?

Support for Ireland's 80% renewable energy target
Supporting local sustainability projects, education, and climate resilience initiatives
Miyawaki forests restoring biodiversity and engaging students in conservation
Programme upskilling workers for green economy jobs



Impact Theme



Equality & Wellbeing



St Kevin's Forest, photography courtesy of SUGi



Case Study: Exploring Innovative Community Benefit Funds Across ORIT Sites



Equality and Wellbeing

ORIT's sites continue to deliver meaningful benefits to their surrounding communities, with community benefit funds ("CBFs") supporting projects that enhance well-being, cultural heritage, and the environment. By leveraging collaboration, digital solutions, and locally embedded partnerships, ORIT is enabling local organisations to create lasting, positive change.



Stakeholder Engagement

Collaboration at Cumberhead

With an annual provision of £249,900, Cumberhead community benefit fund has promised significant community support over the wind farm's 30-year lifespan.

50% of the fund is allocated to the South Lanarkshire Council Renewable Energy Fund, which receives contributions from 41 other wind farms in the area, totalling approximately £2.2 million per year. A key focus of the fund is supporting the Planning for Net Zero Development Framework for the Hagshaw Energy Cluster, which ensures that renewable energy developments in the area are coordinated and collectively contribute to funding initiatives that promote a Just Transition. Developed in collaboration with local authorities, renewable energy developers, statutory agencies, and communities, the framework provides a strategic planning guide to enable sustainable growth, maximise local benefits, and align with Scotland's 2045 net-zero ambitions. By taking a collaborative approach, the framework helps ensure that development in the cluster is well-integrated and supports projects that deliver long-term social, economic, and environmental benefits.

In addition to supporting the above, the other 50% of Cumberhead's CBF is administered to support community groups and charitable organisations that benefit residents living in the community council areas of Coalburn and Lesmahagow. The funding provided in 2024 enabled a range of projects, improving public spaces, well-being, and student support.

Digital Solutions at Saunamaa and Suolakangas

ORIT has expanded its impact in Finland by committing €30,000 annually to support local initiatives. In 2024, €15,000 was distributed to nine different organisations identified through BizGive, with the remaining funds to be allocated in the coming months.

BizGive acts as a matchmaking platform, connecting organisations seeking funding with companies like ORIT. It digitalises the process, allowing applications to be reviewed and scored systematically, ensuring alignment with funding priorities. In Finland, where community benefit funds are less common than in the UK, BizGive provides an efficient and transparent way for local communities to access funding. A community panel reviewed and selected successful applicants, ensuring support reached projects with the greatest local impact.

The funded initiatives focus on physical activity accessibility, outdoor recreation, cultural preservation, and environmental sustainability.

- Projects supporting physical activity and well-being include providing free access to sports equipment and lessons, as well as community-led fitness events to encourage participation across all abilities.
- Donations to outdoor recreation initiatives include modernising orienteering infrastructure and updating maps for navigation, making nature more accessible and enjoyable.
- Cultural initiatives focus on preserving Finnish heritage, offering workshops on traditional skills and digital upgrades in museums to make history more engaging and inclusive.
- Environmental efforts emphasise lakeshore restoration, nature trails, and biodiversity conservation, strengthening community connections with natural spaces.



Embedded Local Partnerships at Breach Solar Farm

ORIT partnered with a local trust, Community Land Trust, near Breach Solar Farm, to distribute £10,000 in community funding. Located at the intersection of county boundaries, the solar farm sits equidistant from three key villages—Burwell, Exning, and Fordham. The funding was structured to provide approximately £2,500 to each of the three villages, micro-donations of £100 to every primary school within a five-mile radius, and the remaining balance was to be directed towards smaller local charities.

Some of the initiatives include:

- Exning New River Association, £2,733
The donation helped to successfully restore a stretch of the historic New River, improving its flow, biodiversity, and ecological health through traditional restoration techniques, ultimately benefiting over 2,250 local residents and visitors.
- Exning Primary School, £100
The school allowed the students to create manifestos of how to spend the grant. The school is currently discussing how to move forward with solar panels on the roofs.
- The Weatheralls Primary School, £100
The school used the donation to repair their polytunnel which is used for involving the children in growing their own fruits and vegetables, impacting around 400 students.

ORIT’s innovative community benefit fund structures are delivering meaningful, long-term impact, tailored to local needs. Whether through strategic regional planning, digital matchmaking platforms, or direct community-led partnerships, ORIT is leveraging partnerships and adaptive funding models to ensure its renewable energy investments are inclusive and create lasting community benefits.

• We would really like to add solar pannels to some of our per roofs To show we are an eco friendly school
 We really hope you liked our ideas and thank you for giving up your time to be here.

Script from student’s pitch at Exning Primary School to the school’s head teacher on how to spend the grant money. Script says: “We would really like to add solar panels to some of our roofs to show we are an eco-friendly school. We really hope you like our ideas and thank you for giving up your time to be here.”



Impact tracker



Who?

Communities near Cumberhead Wind Farm and stakeholders from the Hagshaw Energy Cluster

Local communities near Saunamaa & Suolakangas

Local communities near Breach Solar Farm



How much?

Cumberhead
£249,900 committed, contributing towards a £2.2m shared fund

Saunamaa and Suolakangas
€30,000 committed

Breach £10,000 donated



What?

Coordinated development through pooled funding, ensuring long-term investment in net-zero and just transition initiatives.

Digital funding model, improving accessibility, efficiency, and transparency in community grant allocation.

Locally embedded decision-making, ensuring funding is responsive to community needs through direct partnerships with local trusts.



Impact Theme



Equality and Wellbeing



Stakeholder Engagement



Cumberhead Wind Farm



Case Study: Skilling for a Just Transition – Solar Installer Training Programme



The transition to a net zero economy is creating thousands of skilled jobs in the renewable energy sector. However, access to these opportunities is not evenly distributed—many individuals face systemic barriers to employment, while employers struggle to find job-ready candidates. ORIT partnered with Generation UK to fund Solar Installer training pilots in London and Dublin, ensuring that those most disconnected from the labour market could gain the skills, experience, and industry connections needed to enter the growing solar sector.



With ORIT’s support, 30 learners (12 in London and 18 in Dublin) were selected for the pilot programme, prioritising individuals facing barriers to employment—including long-term unemployment, refugee status, and low socio-economic backgrounds.

These participants would not typically access structured training or solar industry roles through traditional routes. To ensure the success of a broader and more diverse learner group, Generation UK adapted its approach by:

- Expanding outreach to non-traditional recruitment channels, such as community spaces
- Adjusting the admissions process to accommodate lower digital literacy levels
- Providing wrap-around employability support, including mentorship and industry-specific coaching

This structure ensured that graduates were job-ready, equipping them with both technical knowledge and the soft skills necessary for career success.

The five-week hybrid bootcamp combined online learning with in-person, hands-on technical training delivered by industry experts. The training ensured that graduates had both the practical skills and professional behaviours employers require.

The programme has already demonstrated strong early outcomes:

- 95%+ attendance rates, reflecting high learner engagement
- 75%+ graduation rates, ensuring a strong pipeline of job-ready talent
- First job placements secured, with more in progress expected during the structured six-month placement phase
- Employer demand for graduates remains high, with 18 vacancies secured at 8 different employers.

One learner, **Sean**, shared his experience:

“I was out of work for an extended period due to some personal challenges. The continuous support from the Generation team helped me overcome these challenges and build confidence in my abilities.” Upon completing the programme, Sean secured a role as a Junior Solar Installer at Sav Electrical Systems.

As job placements continue over the next six months, the programme is expected to provide a direct route into stable employment for the majority of graduates. ORIT’s funding has not only supported individuals in securing meaningful careers but has also strengthened the solar workforce at a time when the sector urgently needs skilled professionals.



By investing in green skills training, ORIT is playing a key role in ensuring that the renewable energy transition is both inclusive and workforce-ready, equipping individuals with the tools they need to succeed in a low-carbon economy.

Impact tracker



Who?

Individuals disconnected from the labour market (long-term unemployed, low-income backgrounds, refugees, no formal education)



How much?

30 learners trained (12 in London, 18 in Dublin)
5 weeks of structured learning
6-month job placement support



What?

Tailored support addressing systemic employment barriers
High engagement (95% attendance)
First job placements secured with solar employers



Impact Theme



Equality & Wellbeing



Stakeholder Engagement



Before joining the Generation Solar Panel Installer bootcamp, Sean faced significant challenges re-entering the workforce. After completing the programme, Sean secured a role as a Junior Solar Installer at Sav Electrical Systems.



UN SDG specific contributions for People

3 GOOD HEALTH AND WELL-BEING



3. Good Health and Well-being

3.4 & 3.9 – Promote mental well-being and reduce illnesses from environmental pollution:

Community projects funded through community benefit funds and ORIT's impact strategy support mental and social well-being for children and vulnerable groups, while environmental initiatives like lakeshore restoration and nature trails improve air and water quality, creating healthier natural spaces.

4 QUALITY EDUCATION



4. Quality Education

4.3, 4.4 & 4.7 – Equal access to education, increase the number of individuals with relevant skills, and increase skills for sustainable development:

Partnership with the Good Bee Company and Earth Energy Education provide free sustainability-related education programmes. Funding of the Solar Installer Training Programme equip individuals with job-ready skills for careers in the green economy.

8 DECENT WORK AND ECONOMIC GROWTH



8. Decent Work and Economic Growth

8.5, 8.6 & 8.8 – Achieve decent work:

Extensive Health and Safety measures ensures employees are not exposed to risk. Local employment promoted, and training programmes funded in partnership with Generation UK provides opportunities for individuals facing employment barriers to enter the solar job sector.

10 REDUCED INEQUALITIES



10. Reduced Inequalities

10.2 & 10.3 – Promote social and economic inclusion and ensure equal opportunities:

ORIT promotes a just transition by ensuring that the benefits of renewable energy investments are equitably shared across communities. The community benefit funds and other social initiatives funded by ORIT provide targeted support, ensuring that communities experience direct benefits. Additionally, the Solar Installer Training Programme addresses employment barriers.

11 SUSTAINABLE CITIES AND COMMUNITIES



11. Sustainable Cities and Communities

11.4 & 11.7 – Protect cultural and natural heritage, and expand access to green spaces:

Finnish cultural preservation initiatives safeguard heritage, and SUGi forests and park redevelopments improve biodiversity and public spaces.

Glossary

BESS	Battery Energy Storage System
CPI	Consumer Price Index
ESG	Environmental, Social and Governance
EU	European Union
FCA	Financial Conduct Authority
FTE	Full-time Equivalent
GHG	Greenhouse Gases
GWh	Gigawatt Hour
H&S	Health and Safety
HSE	Health, Safety and Environment
ICMM	International Council on Mining and Metals
KPI	Key Performance Indicator
LSE	London Stock Exchange
MW	Megawatt
MWh	Megawatt Hour
NAV	Net Asset Value
NGO	Non-Governmental Organisation
O&M	Operations and Maintenance
OECD	The Organisation for Economic Cooperation and Development
OEGEN	Octopus Energy Generation (trading name of Octopus Renewables Limited), the Investment Manager of ORIT delegated by the AIFM
PIU	Pending Issuance Unit
PPA	Power Purchase Agreement
RCP	Representative Concentration Pathway
RIDDOR	Reporting of Injuries, Diseases and Dangerous Occurrences Regulations
SDG	Sustainable Development Goals
SDR	Sustainable Disclosure Requirements
SECR	Streamlined Energy and Carbon Reporting
SFDR	Sustainable Finance Disclosure Regulation
SID	Senior Independent Director
SPV	Special Purpose Vehicle
STEM	Science, Technology, Engineering and Maths
TCFD	Task Force on Climate-related Financial Disclosures
tCO ₂ e	Tonnes of Carbon Dioxide Equivalent
the Company or ORIT	Octopus Renewables Infrastructure Trust plc
TNFD	Taskforce on Nature-related Financial Disclosures
UK	United Kingdom
UKPN	UK Power Networks
UN	United Nations
WACI	Weighted Average Carbon Intensity
WCU	Woodland Carbon Unit
WWF	World Wide Fund for Nature

