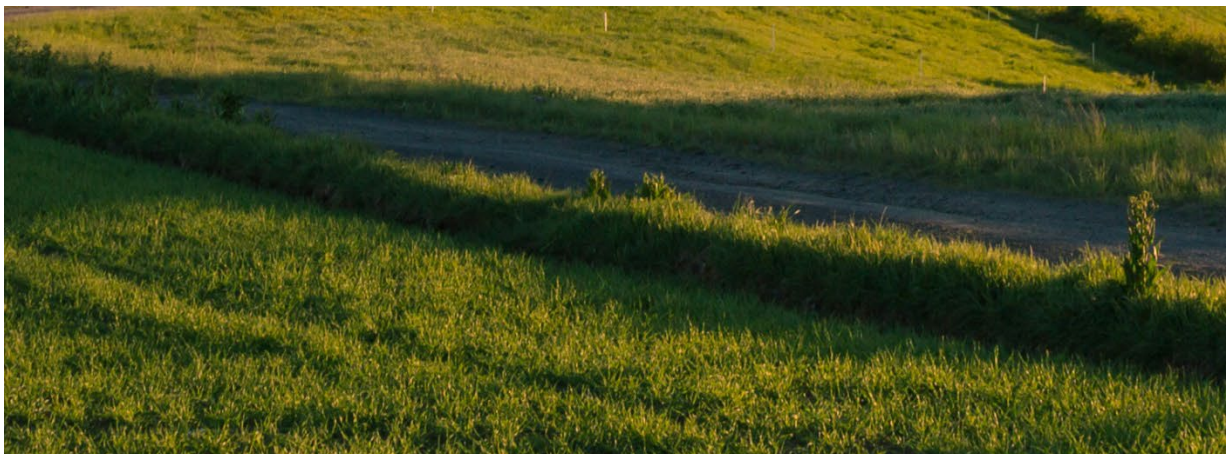





**KCM (Catering Equipment) Ltd**  
Carbon Reduction Plan – *October 2025*



|                              |   |   |
|------------------------------|---|---|
| Document                     | Carbon Reduction Plan                               |  |
| Revision: V1.0<br>31/10/2025 | Author: Gemma Dormer<br>Approved by: Alistair White |   |

## Contents

|   |   |
|---|---|
| 1. Policy Scope, Governance and Compliance.....                     | 2 |
| 2. Commitment to Carbon Reduction.....                              | 3 |
| 3. Organisational Boundary and Reporting Year .....                 | 3 |
| 4. Baseline Emissions Footprint (1 August 2024 – 31 July 2025)..... | 4 |
| 5. Carbon Reduction Targets.....                                    | 5 |
| 6. Carbon Reduction Initiatives .....                               | 5 |
| 7. Monitoring and Reporting.....                                    | 6 |
| 8. Declaration and Publication .....                                | 6 |

## **1. Policy Scope, Governance and Compliance**

### **Policy Scope**

This Carbon Reduction Plan defines KCM (Catering Equipment) Ltd's approach to carbon reduction. This Policy applies to all UK-based operations of KCM (Catering Equipment) Ltd, including buildings, vehicles, and associated managed services.

### **Governance & Responsibility**

The Managing Director is accountable for the delivery of this plan. Progress will be reviewed quarterly by the Board to ensure continual progress towards Net Zero and alignment with the company's strategic objectives.

### **Review & Continual Improvement**

This plan will be reviewed at least annually, and targets and initiatives updated in light of new data, technology, industry best practice, and legislative changes.

### **Legal & Regulatory Compliance**

KCM (Catering Equipment) Ltd will comply with the UK's Climate Change Act, apply the Greenhouse Gas (GHG) Protocol Corporate Accounting and Reporting Standard, and use the UK Government's annual greenhouse gas emission conversion factors for consistency and accuracy in reporting.

### **Approval**

This document was approved by the Board of Directors of KCM (Catering Equipment) Ltd on 31st October 2025.

## 2. Commitment to Carbon Reduction

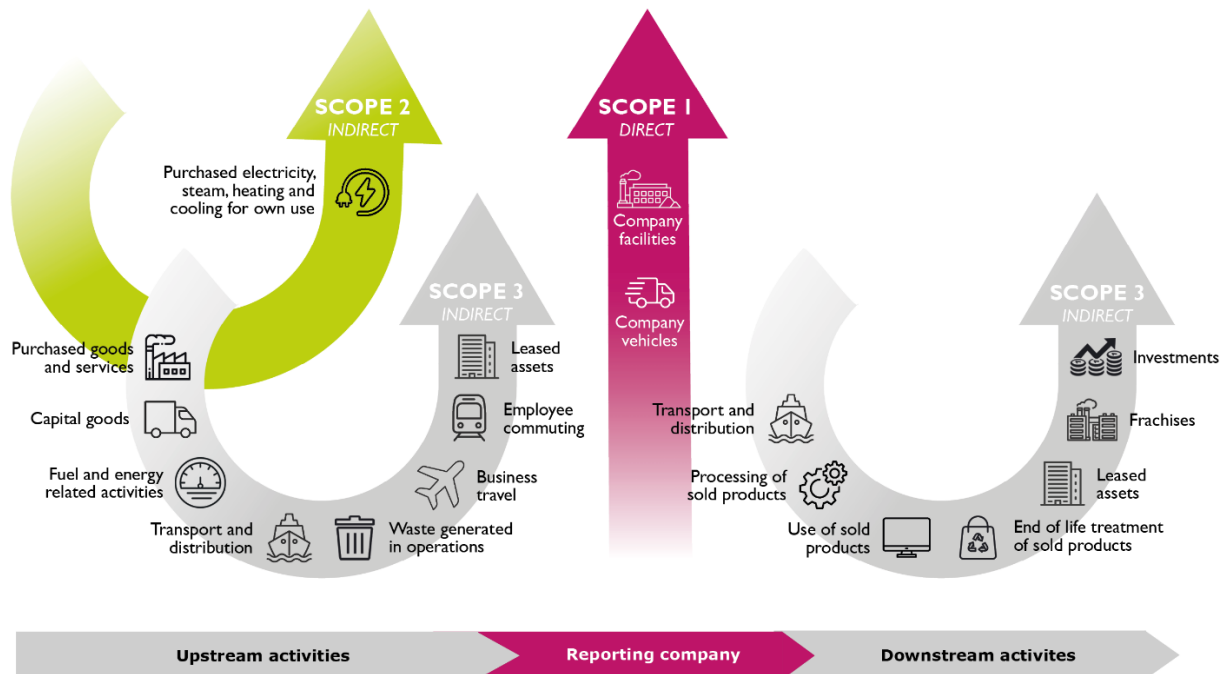
KCM (Catering Equipment) Ltd is committed to operating responsibly and sustainably by reducing the environmental impact of its operations. We support the UK Government’s target to achieve Net Zero greenhouse gas emissions by 2050 and are developing a carbon reduction plan aligned with Procurement Policy Note (PPN) 006.

This statement sets out our current Scope 1 and 2 emissions baseline, ongoing carbon reduction initiatives, and our commitment to developing a comprehensive plan that includes a subset of key Scope 3 emissions.

## 3. Organisational Boundary and Reporting Year

This Carbon Reduction Statement covers **KCM (Catering Equipment) Ltd’s UK operations** for the reporting period:

**1 August 2024 – 31 July 2025**



**Figure 1:** Scopes of Emissions (source GHG Protocol, adapted by BCR Associates) v1

The carbon footprint has been calculated in accordance with the Greenhouse Gas (GHG) Protocol Corporate Accounting and Reporting Standard, covering Scope 1 (direct) and Scope 2 (indirect) emissions.

KCM is currently developing a PPN 006 aligned Carbon Reduction Plan, which will include the Scope 3 (indirect value chain) emissions categories of Waste, Business Travel, Employee Commuting, Upstream, and Downstream Transport & Distribution once data collection is complete.

Emissions have been calculated using the Greenhouse Gas (GHG) Protocol Corporate Accounting and Reporting Standard, and UK Government 2025 conversion factors for greenhouse gas reporting.

- **Scope 1:** Direct emissions from company-owned or controlled sources (e.g. vehicle fuel use).
- **Scope 2:** Indirect emissions from purchased electricity.

#### 4. Baseline Emissions Footprint (1 August 2024 – 31 July 2025)

| Scope          | Category                     | kWh           | tCO <sub>2</sub> e |
|----------------|------------------------------|---------------|--------------------|
| <b>Scope 1</b> | Mobile Combustion            | 29,103        | 7.50               |
| <b>Scope 2</b> | Purchased Electricity        | 18,737        | 3.32               |
|                | Electricity for EVs          | 911           | 0.91               |
|                | <b>Total Scope 1 &amp; 2</b> | <b>48,751</b> | <b>11.73</b>       |

**Total Scope 1 & 2 Emissions (2024–2025): 11.7 tCO<sub>2</sub>e**

Scope 3 Categories - Waste, Employee Commuting, Business Travel, Upstream and Downstream Transport and Distribution - data collection in progress with estimated inclusion by 31 Dec 2025.

#### Assumptions:

- Electric Vehicles (EVs) are charged off-site
- The on-site oil heater, used only when serviced, is considered de minimis and excluded from the baseline

Scope 2 emissions reported are location-based. **Scope 3 emissions** data (covering business travel, waste, purchased goods and services, and logistics) is currently being collated. These will be incorporated into KCM's full PPN 06/21 Carbon Reduction Plan upon completion.

## 5. Carbon Reduction Targets

KCM (Catering Equipment) Ltd has set the following targets in line with the UK's Net Zero pathway:

- **By 2030:** Achieve a **30% reduction** in Scope 1 and 2 emissions relative to the 2024/25 baseline.
- **By 2045:** Achieve **Net Zero emissions** across all operational and value chain activities.

Targets will be reviewed annually and refined as Scope 3 data becomes available and reduction initiatives are implemented.

## 6. Carbon Reduction Initiatives

Completed carbon reduction initiatives

The following environmental management measures and projects have been completed or implemented:

- **Fleet Electrification:** All company cars transitioned from petrol to electric vehicles over two years ago, reducing emissions by **~ 3 tCO<sub>2</sub>e**.
- **LED Lighting:** All internal and external lighting at the premises replaced with energy-efficient LEDs approximately three years ago.
- **Office Energy Efficiency:** New air-conditioning system installed upon relocation four years ago to improve thermal efficiency.
- **Hot Water System:** Kitchenette water boiler downsized and upgraded last year to a more efficient model.

Future carbon reduction initiatives

KCM (Catering Equipment) Ltd hopes to implement further measures to reduce its carbon footprint, including:

- **Renewable energy sourcing:** KCM does not currently control its energy contracts (managed by the letting agent) but will request the inclusion of green or renewable tariffs when contracts are reviewed.
- **Business travel management:** Encouraging digital meetings and sustainable transport options.

- **Supply chain collaboration:** Working with manufacturers and logistics partners to identify lower-carbon alternatives and improve efficiency.
- **Waste and recycling improvements:** Enhancing waste segregation and recycling to minimise landfill impact.
- **Low-Carbon Logistics:** Where larger vehicles must be hired for deliveries or project transport, KCM will minimise diesel van use and monitor market availability of electric or hybrid alternatives.
- **Ongoing Efficiency:** Energy use and travel requirements will be reviewed annually to identify additional opportunities for emissions reduction.

## 7. Monitoring and Reporting

KCM (Catering Equipment) Ltd will monitor carbon performance on an annual basis, reviewing progress against reduction targets and updating the Carbon Reduction Plan accordingly.

Once Scope 3 emissions data collection is complete, the company will publish its PPN 006-aligned Carbon Reduction Plan online, ensuring transparency and accountability.

## 8. Declaration and Publication

Emissions have been reported and recorded in accordance with the published reporting standard for Carbon Reduction Plans and the GHG Reporting Protocol corporate standard and uses the appropriate government emission conversion factors for greenhouse gas company reporting. Scope 1 and Scope 2 emissions have been reported in accordance with SECR requirements.

This Carbon Reduction Plan has been reviewed and approved by the Directors of KCM (Catering Equipment) Ltd.

**Signed:**

**Name:** \_\_\_\_\_ Alistair White \_\_\_\_\_

**Position:** \_\_\_\_\_ Director \_\_\_\_\_

**Date:** \_\_\_\_\_

**KCM (Catering Equipment) Ltd**

**KCM (Catering Equipment) Ltd**

Author: Gemma Dormer, BCR Associates  
28 October 2025

