

www.eural.com

The logo for Eural Gnutti S.p.A. is displayed in a blue, sans-serif font. The word "EURAL" is in a larger, bold font, with a horizontal line underneath it. Below "EURAL" is the text "GNUTTI S.p.A." in a smaller font. The logo is centered within a circular frame that overlaps a background image of stacked metal pipes.

EURAL
GNUTTI S.p.A.

Sustainability Report 2023

Eural Gnutti S.p.A.

SUSTAINABILITY REPORT

Eural Gnutti S.p.A.

**Sustainability
is in our dna!**



Contents

Letter to stakeholders	04
Introduction	06
Highlights	08
1. Eural Gnutti S.p.A.	10
1.1 Our commitment to and strategies for sustainability	
1.2 Our relationship with stakeholders	
1.3 Materiality assessment	
1.4 Business profile	
1.5 Our products	
☒ <i>Lead-free alloys with high machinability</i>	
1.6 Governance model	
Aluminium as a strategic material to support decarbonisation and clean technology	38
2. Economic sustainability	40
2.1 Economic and commercial performance	
☒ <i>Circular economy</i>	
2.2 Quality and innovation	
2.3 The supply chain	
3. Social sustainability	50
3.1 People	
3.2 Staff training and involvement	
3.3 Protecting workers' health and safety	
3.4 Supporting local organisations	
3.5 Corporate welfare and employee programmes	
☒ <i>Sustainability, quality and ethics: the challenges and opportunities for future businesses</i>	
4. Environmental sustainability	62
4.1 Environmental sustainability policies and goals	
4.2 Raw material and energy	
☒ <i>Solar</i>	
4.3 GHG emissions	
4.4 Waste	
4.5 Water resource	
4.6 Water discharges	
4.7 Atmospheric emissions	
4.8 Management of spills and leaks	
4.9 Biodiversity and land use	
4.10 Noise emissions and containments systems	
4.11 Plan for reducing emissions, pollutants, and impacts on water resources, waste, and contaminations	
5. Goals: <i>Eural Gnutti S.p.A.'s commitment</i>	84
6. GRI standard reference table	88
7. Contacts	92



Letter to stakeholders



GRI 102-14



Growth.

This is the keyword, the goal that I, and everyone at Eural Gnutti, strive towards in our day-to-day activities. The north star that guides our choices and that leads us to follow paths that are often not easy, but full of opportunities.

Despite having 56 years of company history behind us, we do not aspire to celebrate what has been but rather to continue looking to the future, to understand what we can improve and what goals we can strive to reach, with all of our strength and intelligence. Hence this Sustainability Report, which for us represents a fixed point in the course of our days; a photograph from which to do further more

and always better and that focuses our commitment in terms of the social and environmental impact of our work, in the implementation of circular economy principles and in business management.

In fact, the last few years have been full of activities, innovations and results, and that precisely supports our conviction that the best is still yet to come: the cornerstone of our work, aluminium, is a 'young' metal, which still offers a wide range of applications. Its versatility is very much appreciated, even in niche sectors, and we are excited to study its potential and possible applications thanks to know-how based on decades of experience but, above all, is constantly updated and improved with professionalism, knowledge and experimentation in the field. We

aim to work alongside our customers so that we can understand together where our and their dreams can take us and undertake to bring them to life.

Similarly, we do not fear the world; in fact, it is with great interest that we explore it in order to understand where we can expand, which markets the bars and profiles produced by our factories might tap into. Through our products, we travel the world, bringing the values of Eural Gnutti: quality, transparency, responsibility, vision, attention to social problems, to the reference framework, to the implementation of green and eco-sustainable policies and procedures. The topics of a Sustainability Report, which will unfold for the first time in the following pages, are the fundamental elements of our company; they guided

those that founded it, and they guide us today.

Sustainability is one more way of bearing witness to our commitment to building a world in which everyone is called upon to make their own contribution.

We at Eural Gnutti undertake, with genuine enthusiasm, to keep doing our best.

Paola Gnutti

CEO OF EURAL GNUTTI S.p.A

Introduction

The topic of sustainability is undoubtedly highly topical, to a point that virtuous companies are investing significant resources to promote and improve all aspects related to it. Eural Gnutti wishes to accept the challenge, therefore it has invested resources and energy into reaching goals related to sustainability issues, in the direction of continuous and constant growth.

Eural Gnutti has always been driven by sustainability, that is why it is very apt to explore all the decisions made in the last twenty-five years. In fact, as early as the late nineties we began studying and developing alloys that, without sacrificing excellence in performance, could be manufactured from as much post-consumer scrap as possible, even though the trend at the time was to avoid scrap and only use primary raw materials. Furthermore, significant investments into the foundry were all dedicated, as early as 2008, towards lines that maximised and made efficient the use of scrap.

In this sense, we also wish to emphasise Eural Gnutti's intuition in creating highly machinable lead-free alloys at a time in which the issue of toxicity of lead had not yet been focused on nor standardised. The company focused its R&D efforts on developing lead-free alloys with high

machinability, which were highly valued by the market and became an international standard.

The aluminium sector fully embraces all the concepts that form the basis of sustainable development, from its infinite recyclability to its non-toxicity; in addition, its alloys have such varied characteristics that it can be used in a range of industries, from food to automotive to aerospace, and for an endless number of applications. Moreover, as it is the third most available element on the Planet, aluminium is safe from future shortages and becoming uneconomical.

Eural Gnutti, although being mainly geared towards the international markets, exporting more than 80% of its semi-finished products, strongly believes in human value, specialisation of its work force and the potential of its territory. Therefore, it has never considered the idea of moving its production sites out of Brescia, Italy, certain of the fact that, more than anything else, what counts is the link with the region and the people who live there, who constitute the true brain and muscles that move the company with such skill and energy.

A system as complex and well-balanced as Eural Gnutti must, first and foremost, prioritise the

safety of the people that work there, external partners and customers. It therefore dedicates every resource necessary to implement better systems and equipments, as well as paying the utmost attention to training and procedure controls.

Customers recognise such efforts, as much as they chose and involved Eural Gnutti in their decision-making processes. Major international groups, linked to the world of mechanics and automotive, have chosen our highly machinable lead-free alloys for their products. They have found what

they were looking for in our solutions: high-performance, high-productivity alloys that ensure high resistance and first-class performance, ensuring that products and workplaces are free of elements that today are classified as toxic, such as lead. Years ago it was unthinkable to do without, but today, thanks to the highly machinable lead-free alloys designed and registered by Eural Gnutti, lead will no longer be necessary.

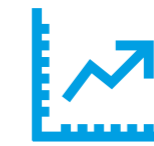
Sustainability is part our DNA; we are, and always will be, ready to tackle new challenges and objectives.



Eural Gnutti S.p.A. 2023

416 employees

ACROSS BOTH ROVATO AND PONTEVICO



€310 ml

REVENUE

18,5%

OF HIGHLY MACHINABLE LEAD-FREE BARS PUT ON THE MARKET

74%

OF RECYCLED ALUMINIUM

6.388 hours

OF TRAINING GIVEN

+23,61%

IN PRODUCTION OF HIGHLY MACHINABLE LEAD-FREE BILLETS



15,35 hours

TRAINING/EMPLOYEE



2 FACTORIES IN **ITALY**



1 WHOLLY-OWNED **US** SUBSIDIARY



1 WHOLLY-OWNED **GERMAN** SUBSIDIARY

Highlights 2023

1. Eural Gnutti S.p.A.

1.1 OUR COMMITMENT TO AND
STRATEGIES FOR SUSTAINABILITY

1.2 OUR RELATIONSHIP
WITH STAKEHOLDERS

1.3 MATERIALITY ASSESSMENT

1.4 BUSINESS PROFILE

1.5 OUR PRODUCTS

⊕ LEAD-FREE ALLOYS WITH
HIGH MACHINABILITY

1.6 GOVERNANCE MODEL



1.1 Our commitment to and strategies for sustainability

Sustainable development goals



GRI 102-46

The aspects considered relevant by stakeholders and **Eural Gnutti** are consistent with the Sustainable Development Goals (or SDGs)¹.

The following are the SDGs that we consider most relevant to our work and that we strive to achieve:

SUSTAINABLE DEVELOPMENT GOALS



¹Created in 2015 by the United Nations to call all public and private actors at a global level to action, the SDGs aim to face the challenges posed by climate change and reduce all types of poverty and inequality, ensuring social, environmental and economic sustainability of human communities in the long term.



“Approaching our first Sustainability Report allowed us to open our eyes to the fact that we already had the matter under control, even before referring to obligations and constraints”

1.2 Our relationship with stakeholders



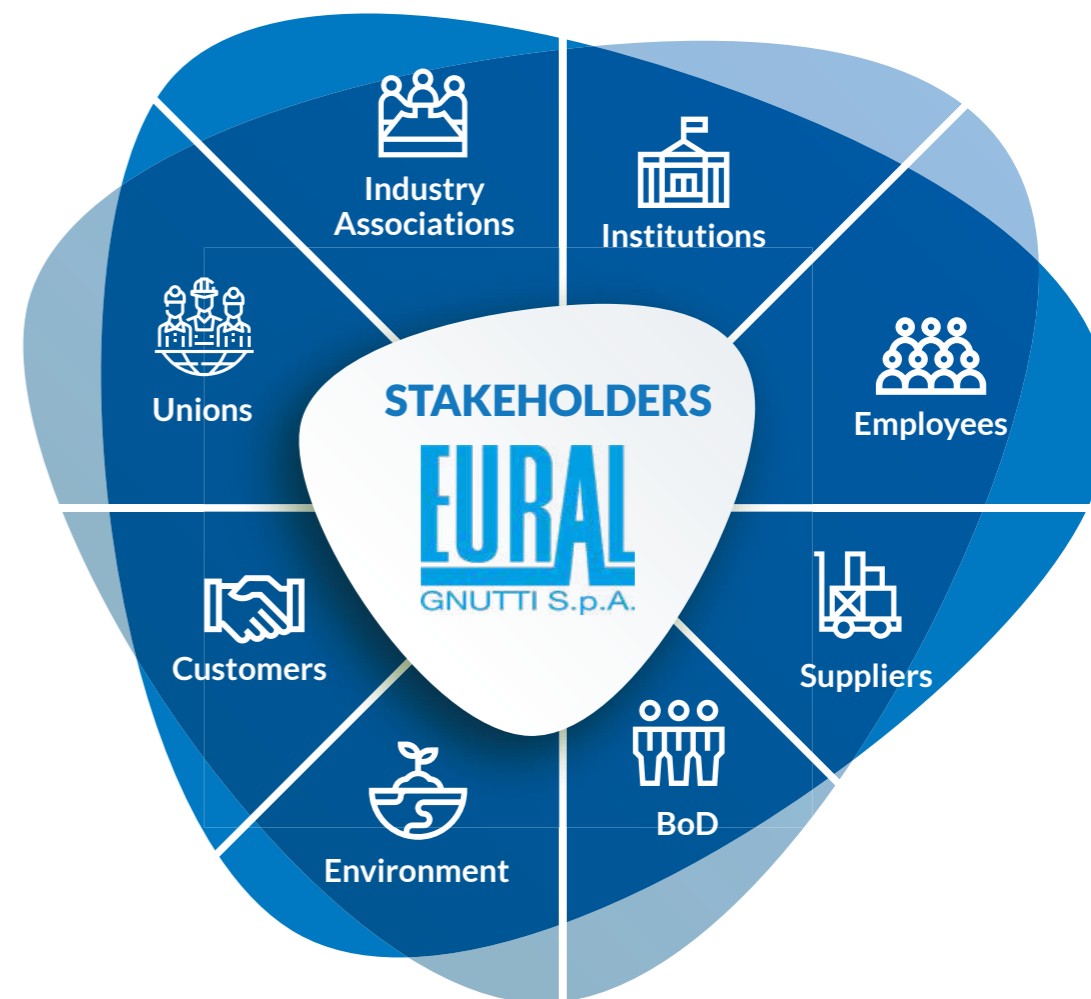
GRI 102-21
GRI 102-40
GRI 102-42
GRI 102-43

Eural Gnutti is aware of the importance of establishing an open dialogue with all of its stakeholders.

This allows us to receive important information on the relevant context in which we operate and which we address, in order to best identify our material issues and establish goals and courses for improving our economic, social and environmental performance, both for our own benefit and for that of the stakeholders.

Integrating themes of sustainability into open dialogue with our stakeholders is of the utmost importance in order to correctly direct the efforts that we, **Eural Gnutti**, are making to understand our own priorities and establish strategic guidelines.

The stakeholder involvement strategy that **Eural Gnutti** has implemented includes various tools and methods, such as direct dialogue, meetings, surveys, feedback questionnaires, etc.



As well as direct involvement, **Eural Gnutti** also implements different methods to provide stakeholders with transparent, complete and up-to-date information.

For external communication, **Eural Gnutti** uses the following channels:

» MULTILINGUAL WEBSITE

» TRADE MAGAZINES

» COMPANY BROCHURES

» PARTICIPATION IN TRADE SHOWS

For internal communication, **Eural Gnutti** uses the following channels:

» MEETINGS WITH MANAGEMENT

» OFFICE MEETINGS

» PERFORMANCE REVIEWS

» ANNUAL, QUARTERLY AND MONTHLY REPORTS

» COMPANY INTRANET, SHARED SERVER FILES

» NOTICE BOARDS IN THE WORK AREAS

Publication of the Sustainability Report is included amongst these tools to further broaden our communication abilities on ESG issues.

1.3 Materiality assessment



GRI 102-47

Eural Gnutti has conducted a materiality assessment in order to identify the ESG issues most relevant to our organisation.

Our main stakeholders were directly involved in the assessment: staff inside the company, management, main suppliers and customers.

Eural Gnutti sent these stakeholders a questionnaire on ESG issues

and analysed the results.

Staff at **Eural Gnutti** were involved in filling out the questionnaire throughout the day on 13 October 2023, on which a multidisciplinary training event was held.

Through work groups, **Eural Gnutti** staff were able to reflect on ESG issues and give their own point of view.

Topics covered



ENVIRONMENT

Waste management
Atmosphere emissions management
Water resource management
Waste water management
Development of circular economy strategies
Focus on climate change and greenhouse gas emissions



SOCIAL

Development and enhancement of skills and talents
Protecting occupational health and safety
Positive impact on the community
Protection of human rights and working conditions in the supply chain
Well-being at work
Inclusivity and promoting diversity



GOVERNANCE

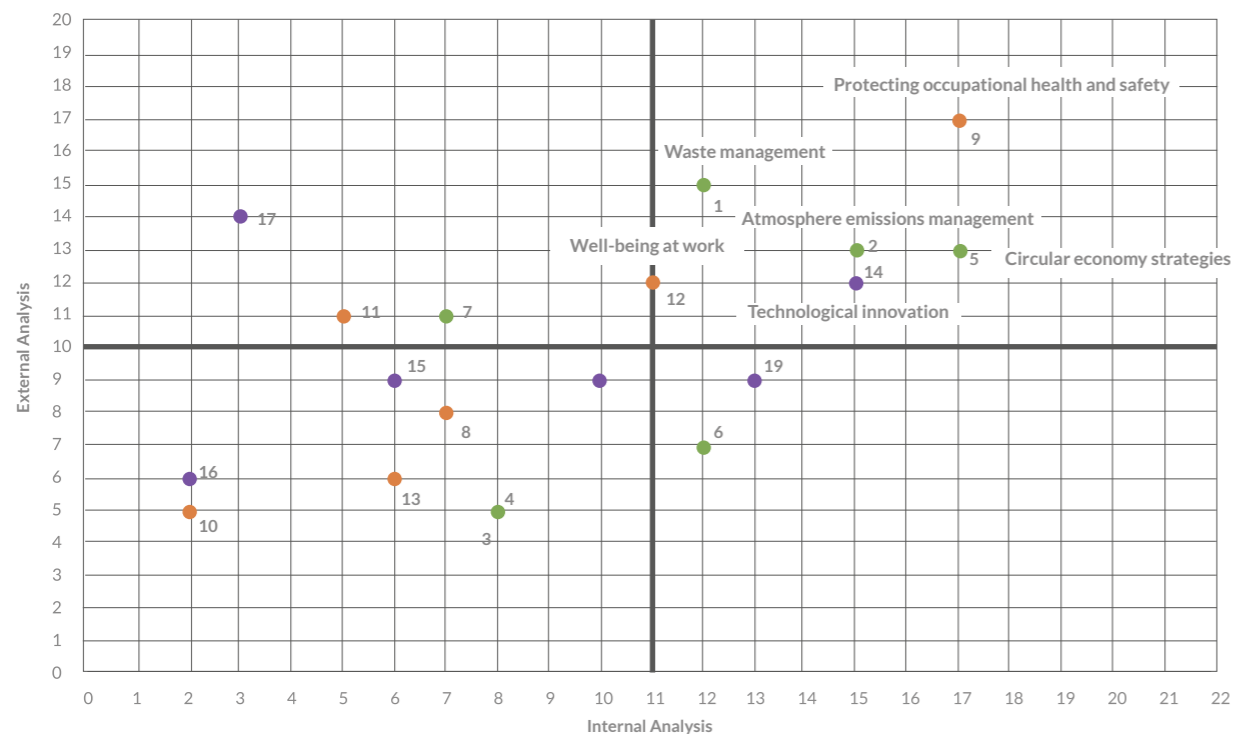
Privacy management and cybersecurity
Development of digital business tools
Business ethics
Development and economic growth
Safe products

The assessment showed the following to be the most relevant ESG issues:

Materiality topics

 <p>ENVIRONMENT</p> <ul style="list-style-type: none"> Waste management Circular economy strategies Atmosphere emissions management 	 <p>SOCIAL</p> <ul style="list-style-type: none"> Protecting occupational health and safety Well-being at work 	 <p>GOVERNANCE</p> <ul style="list-style-type: none"> Technological innovation
--	--	--

Safeguard of health and safety in the workplace



- 1- Waste management
- 2 - Atmosphere emissions management
- 3 - Water resource management
- 4 - Waste water management
- 5 - Circular economy strategies
- 6 -Climate change and GHG emissions
- 7 - Renewable energy
- 8 - Development and enhancement of skills and talents
- 9 - Protecting occupational health and safety
- 10- Positive impact on communities
- 11 - Protection of human rights and working conditions in the supply chain
- 12 - Well-being at work
- 13 - Inclusivity and promoting diversity
- 14 - Technological innovation
- 15 - Privacy management and cybersecurity
- 16 - Development of digital business tools
- 17- Business ethics
- 18 - Development and economic growth
- 19 - Safe products

1.4 Business profile



GRI 102-1
GRI 102-2
GRI 102-3
GRI 102-4
GRI 102-6
GRI 102-7

Eural Gnutti is the world's leading manufacturer of aluminium alloy products in terms of resistance and machinability. Our alloys are particularly popular in the automobile, aerospace and defence industries as well as in the mechanical engineering industry in general. The range of products also includes extruded bars and extruded profiles.

Eural Gnutti has developed lead-free aluminium alloys with high machinability, a high content of recycled aluminium and high performance in terms of resistance and machinability. Our alloys are particularly popular in the automobile, aerospace and defence industries as well as in the mechanical engineering industry in general. **Eural Gnutti's** output is 100% Made in Italy, with products of the highest quality without compromise that are geared towards the future.



Why aluminium?

Aluminium is one of the most used materials in the modern industry thanks to the following properties:

LIGHTWEIGHT:
very low specific weight.

FORMABILITY:
allows for a vast range of products and alloys.

MACHINABILITY:
easily machined.

LIFESPAN AND CORROSION RESISTANCE:
optimum resistance which may be increased further thanks to surface treatments.

ELECTRICAL AND THERMAL CONDUCTIVITY:
excellent for conducting electricity and dissipating heat.

NOT TOXIC:
non-toxic material, in fact it is the most used material in the food industry.

RECYCLABILITY:
easily and infinitely recyclable, at a low cost.

Our history

1968

In 1968 Oreste Gnutti founded **Eural Gnutti**, a manufacturing company whose name combines the family surname with Europe and Aluminium.

OUR FIRST EXTRUDED BILLET



In 1968 extrusion of the first billet took place on our production site in Rovato, this date marks the start of a production history based on value of work, including care and respect for our employees.

In 1970 / 1980

New investments brought about changes for the company:

- the new foundry
- aluminium alloys for industrial applications

From 1980 to 2015

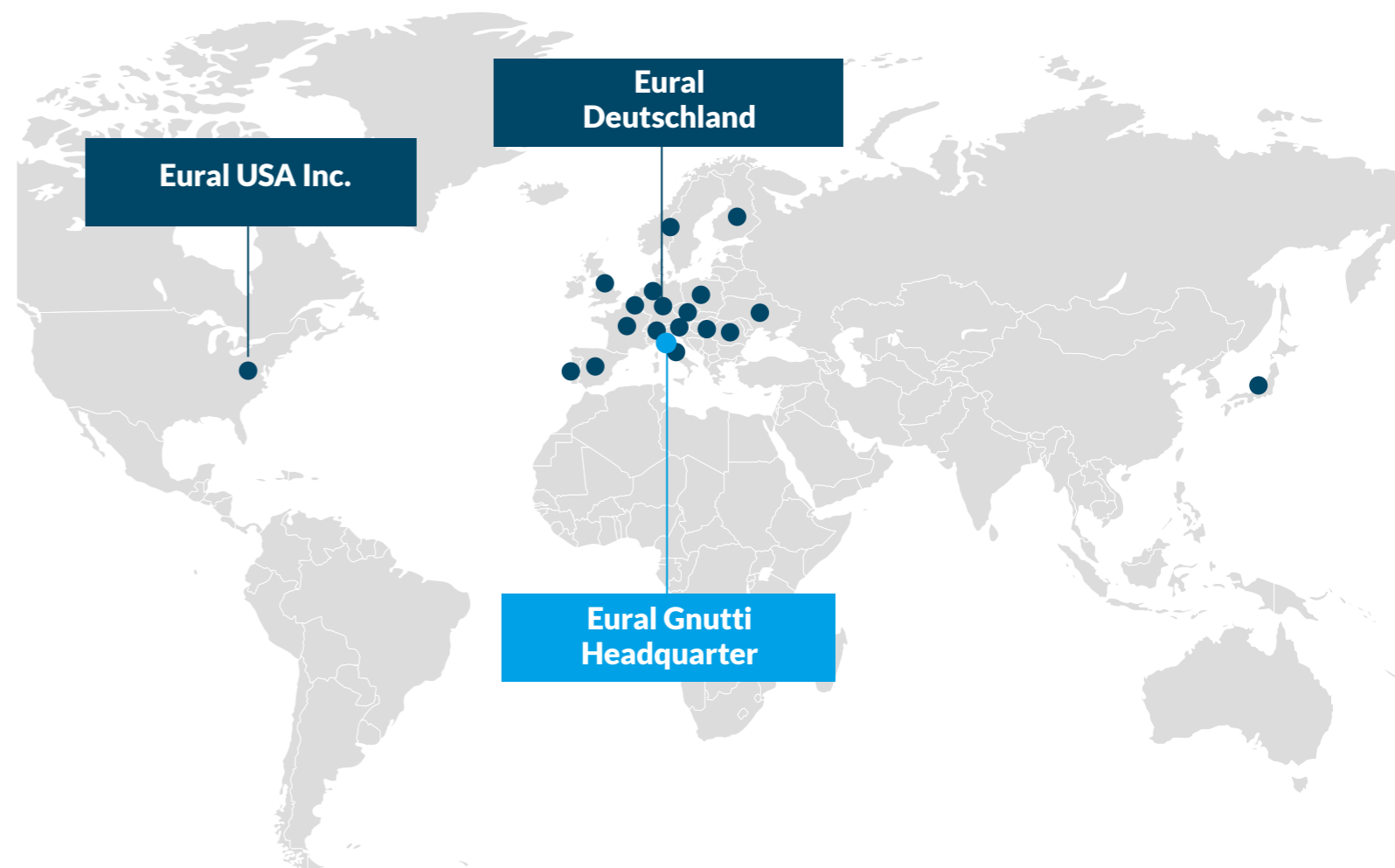
The company continued to grow by investing in new extrusion presses and research and development

From 2015 to the present day

Major innovations have been made:

- acquisition of new lines and machinery
- development of new highly machinable lead-free alloys
- tapping into new markets
- digitalisation of company processes

Eural Gnutti S.P.A. in Italy and abroad



“We are able to count on a capable and cohesive team that provides a completely holistic vision. A strong sense of belonging, given the company’s family DNA, also makes a difference”

As well as the Italian sites in Rovato (extrusion) and Pontevecchio (foundry), **Eural Gnutti** owns 100% of a trading company in the United States (Eural USA Inc.) and a sales brokerage company in Germany (Eural Deutschland GmbH); furthermore, we collaborate with different sales agents in Italy and worldwide.

The sites

PRODUCTION: FACTORY IN ROVATO (BS)

The Rovato factory was established in 1968 and produces semi-finished extruded products, followed by cold working (drawing) and thermal treatments.

The production output of **Eural Gnutti** mainly consists of round, square, hexagonal and flat bars and profiles in aluminium alloys.



ACTIVE SINCE	NO. OF EMPLOYEES 2023	TOTAL SURFACE AREA	ACTIVITY	NO. OF EXTRUSION PRESSES
1968	321	243.000 m ²	Production of bars and profiles	5

FOUNDRY: FACTORY IN PONTEVICO (BS)

The billet foundry in Ponteviso was established in 1985 and carries out casting of aluminium alloys. In particular, the plant uses modern smelting and casting technology.

The factory is able to guarantee that the billets comply with the class "A" specifications of the SAE AMS-STD-2154 standard with regard to their structural integrity.

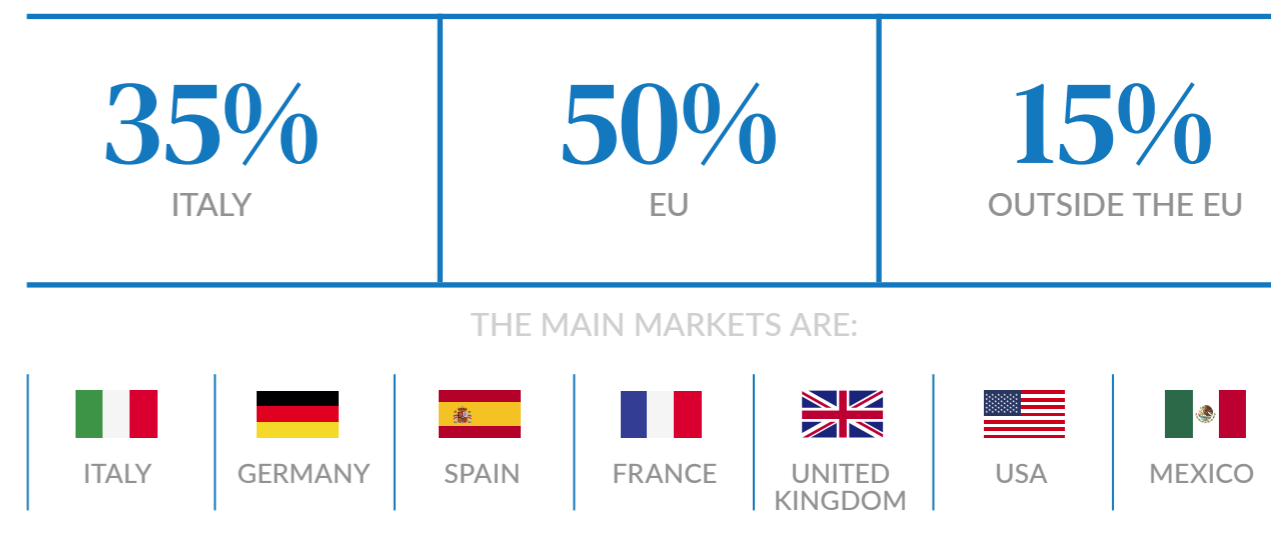


ACTIVE SINCE	NO. OF EMPLOYEES 2023	TOTAL SURFACE AREA	ACTIVITY	NO. OF CASTING LINES
1985	95	112.194 m ²	Production of billets	2

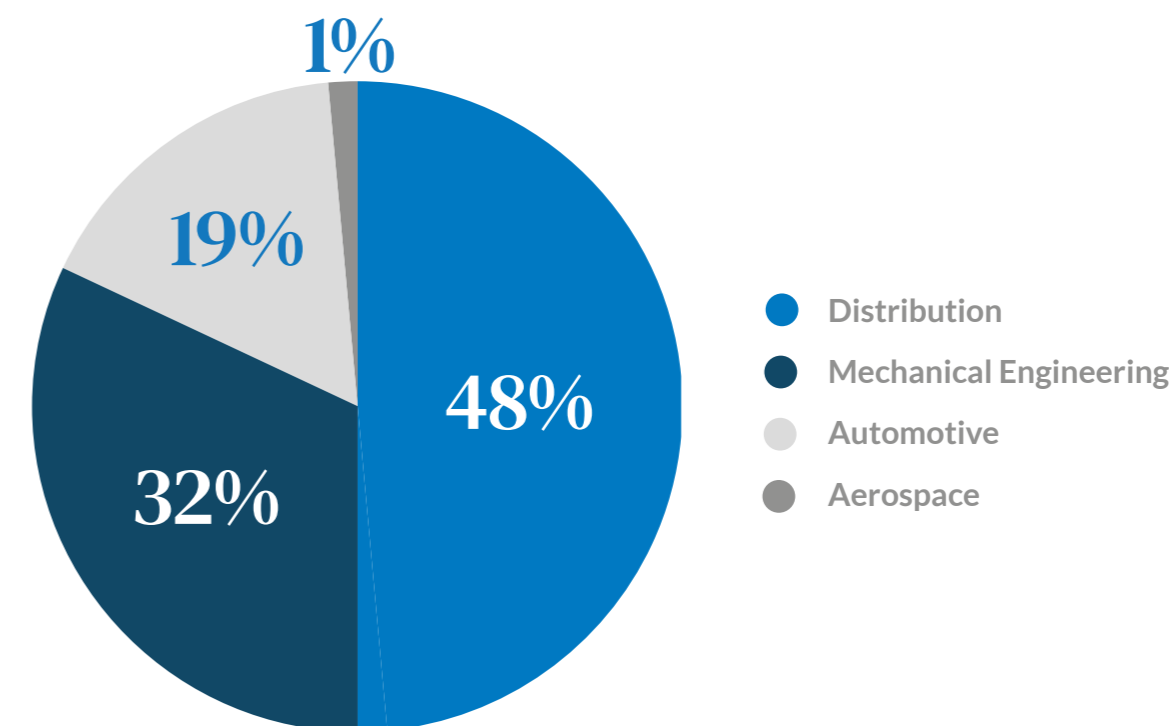
The billets produced supply the bar extrusion presses of the production plant in Rovato.

Customers

Eural Gnutti sells its products worldwide:



Eural Gnutti customers are mainly broken down into the following sectors:



Eural Gnutti S.p.A. certifications

To ensure the utmost efficiency of our products, in order to achieve the highest level of satisfaction from our customers, **Eural Gnutti** has obtained and maintains a series of certifications, verified by a third party.

Quality System ISO 9001:2015
Automotive IATF 16949:2016
Environment System ISO 14001:2015
Aerospace EN 9100:2018
Energy System ISO 50001:2018
Pressure Equipment PED 2014/68/EU

Furthermore, **Eural Gnutti** applies the principles of the standard **UNI EN ISO 45001:2023**, Occupational Health and Safety, and SA 8000, the international standard that looks to ensure fair and adequate working conditions within businesses.

As of 2024, **Eural Gnutti** will increase its efforts regarding sustainability issues, which is the reason that the business aims to obtain, by the end of the year, **ASI certification**.



The Aluminium Stewardship Initiative (ASI) is a global standardisation and certification organisation which has developed an independent certification system focused on the sustainable and responsible production of aluminium. ASI has two certification standards: the Performance Standard (which certifies production plants) and the Chain of Custody Standard (which certifies the value chain). **Eural Gnutti** aims to certify its plants in Rovato and Pontevico according to the ASI Performance Standard. The standard requires 11 principles to be applied that cover areas such as greenhouse gas emission, water resource management, biodiversity, work and human rights in order to ensure that the aluminium manufacturing practices not only respect the environment but also the fundamental rights of the people involved in its production.

The Aluminium Stewardship Initiative (ASI) is a notable example of how the global aluminium industry is responding to the need for greater social and environmental responsibility and sustainability.

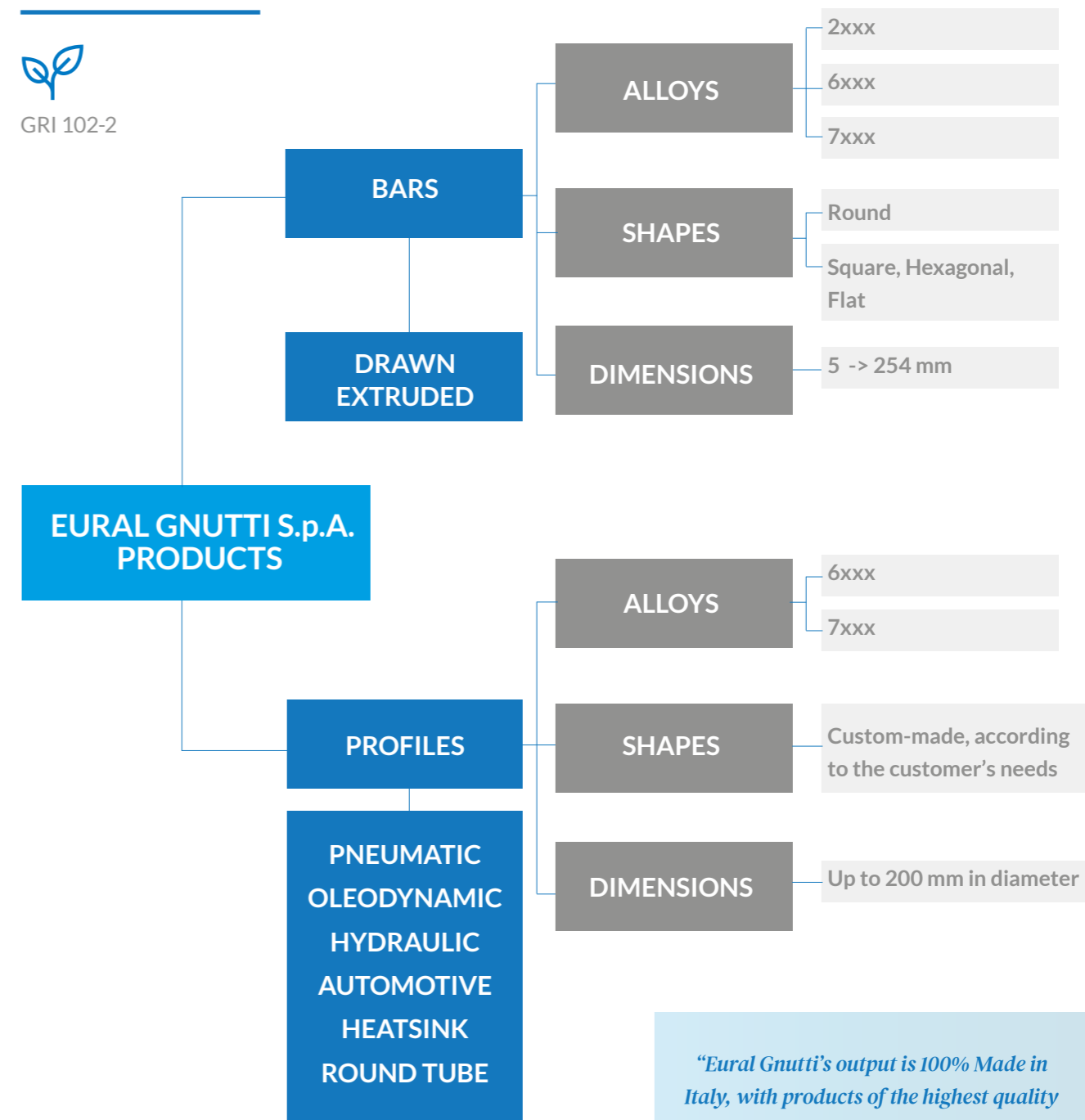
“Eural Gnutti has always had a natural affinity for all sustainability-based aspects. We deem it necessary to adhere to the ASI, a high level organisation and a true benchmark for certifying the efforts that have led us to today’s results. This is to enhance our business model centred around the main pillars of sustainability”.

PAOLA GNUTTI,
CEO Eural Gnutti S.p.A.

1.5 Our products



GRI 102-2



“Eural Gnutti’s output is 100% Made in Italy, with products of the highest quality without compromise that are geared towards the future”.

PAOLA GNUTTI,
CEO Eural Gnutti S.p.A.

The bars

From 1968 **Eural Gnutti** has produced aluminium semi-finished products. The majority of production consists of bars for mechanical machining, which have the following characteristics:

» MACHINABILITY

» UNIFORMITY

» OTHER MECHANICAL PROPERTIES

On its website, **Eural Gnutti** offers stakeholders a detailed catalogue so that they can explore its products characteristics:



[CONSULT THE CATALOG HERE](#)



Fields of application for Eural Gnutti S.p.A. products

BARS

The bars produced by **Eural Gnutti** meet the needs of various sectors:

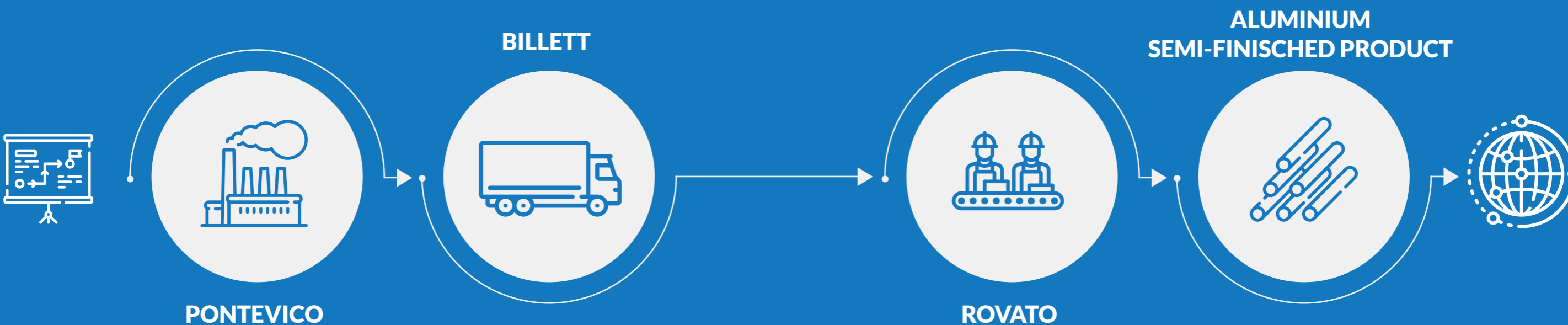
- MECHANICAL ENGINEERING INDUSTRY
- AUTOMOTIVE
- AEROSPACE
- MEDICAL
- ELECTRICAL INDUSTRY
- ELECTRONIC INDUSTRY

The bars are obtained by extrusion presses at the Rovato production site (Italy), using the billets produced in our Pontevico foundry (Italy).

PROFILES

The second macro-category of **Eural Gnutti** products is profiles, which are obtained through an extrusion process followed by specific thermal treatments.

- AUTOMOTIVE
- PNEUMATIC
- ACTUATORS
- OLEOHYDRAULIC
- HEATSINKS



ALLOYS

Eural Gnutti uses a wide range of alloys for the production of its products, each different due to their physical, chemical and mechanical properties.

Eural Gnutti largely uses pre- and post-consumer recycled material in the production of its alloys.

“Aluminium with technology”



The choice of the colour pink for alloy 2033 further highlights Eural Gnutti’s commitment and sensitivity to eliminating adverse health effects caused by lead. Sensitivity bolstered by the fact that this metal is, amongst other things, harmful to fertility, pregnancy and breastfeeding.

ALLOY	COLOUR CODE	BARS	PROFILES	LEAD-FREE	HIGH MACHINABILITY
2033		✓		✓	✓
2011		✓			✓
2077		✓		✓	✓
2007/2030		✓			✓
2017A		✓		✓	
2024		✓		✓	
6026LF		✓	✓	✓	✓
6064A		✓			✓
6262A		✓		✓	✓
6082		✓	✓	✓	
6061		✓		✓	
7075		✓		✓	
6060	NONE		✓	✓	
6063			✓	✓	
6005A			✓	✓	
7003			✓	✓	



TRADITIONAL ALUMINIUM ALLOYS

- Machine downtime is required to clear the work area Low Productivity
- Higher production costs
- Machine busy for longer



ALUMINIUM ALLOYS WITH HIGH MACHINABILITY

- 24H work cycles with minimum supervision required
- More pieces in less time
- Lower production costs
- Machine free for other orders



LEAD-FREE ALLOYS WITH HIGH MACHINABILITY

For a while now, international regulations governing the aluminium sector (RoHS, REACH, ELV) have been shifting towards restrictions on lead in aluminium alloys and other metals as it is deemed highly toxic for human health and polluting for the environment.

Eural Gnutti has created and developed new alloys that are “lead Free and highly machinable”:
2033, 2077 and 6026LF.

“LEAD-FREE” ALLOY	CHARACTERISTICS	FIELDS OF APPLICATION	CONFORMITY
2033	Excellent machinability Thin chip Tools lifespan High mechanical properties Aptitude for anodising	Automotive Electric Electronic Defence Moulding Screws, Nuts and Bolts Threaded parts	2000/53/EU (ELV) 2011/65/EU (RoHS II) 2015/863/EU (RoHS III) 2018/740/EU
6026LF	High speed machining Corrosion resistance Medium-high mechanical properties Aptitude for decorative anodising	Automotive Electric Electronic Moulding Screws, Nuts and Bolts Threaded parts Small parts	2000/53/EU (ELV) 2011/65/EU (RoHS II) 2015/863/EU (RoHS III) 2018/740/EU
2077	High mechanical properties High resistance Aptitude for moulding Excellent machinability High productivity Surface roughness	Valves Screws and bolts Threaded rods Aerospace Defence Automotive	2000/53/EU (ELV) 2011/65/EU (RoHS II) 2015/863/EU (RoHS III) 2018/740/EU

6026LF by Eural Gnutti was the first lead-free alloy with high machinability developed by **Eural Gnutti** research and development laboratories in order to meet the most stringent customer needs for critical automotive applications, such as the brake system.

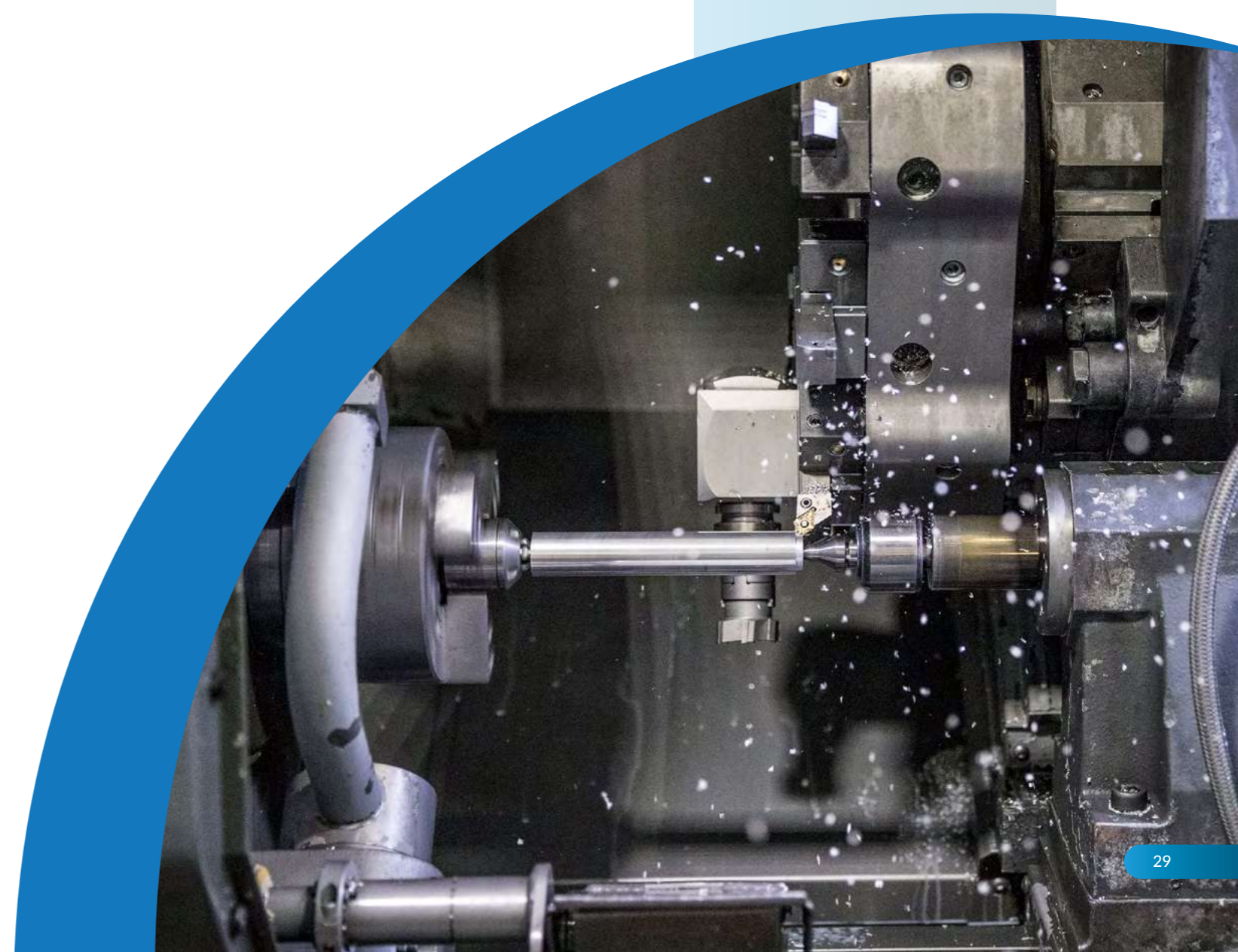
Use of this alloy has since also been extended to electrical, electronic, valve, oleohydraulic, pneumatic and mechanic industries.

Already for some years now, **Eural Gnutti** has played an active role, together with other multinationals, in technical boards set up at European diplomatic offices for the implementation of international regulations on restricting lead in aluminium alloys.



“Our company has developed alloys which ensure a high level of productivity and efficiency regardless of whether or not it contains lead. We were amongst the first to create aluminium alloys without lead that ensure high mechanical properties and truly impeccable performance”

PAOLA GNUTTI,
CEO Eural Gnutti S.p.A.



Lead-free alloys with high machinability

“For many years **Eural Gnutti** - a leading company worldwide for the production of aluminium semi-finished products - has been focusing on non-toxic and lead-free alloys in connection with the stringent needs of environmental sustainability and workers’ health.

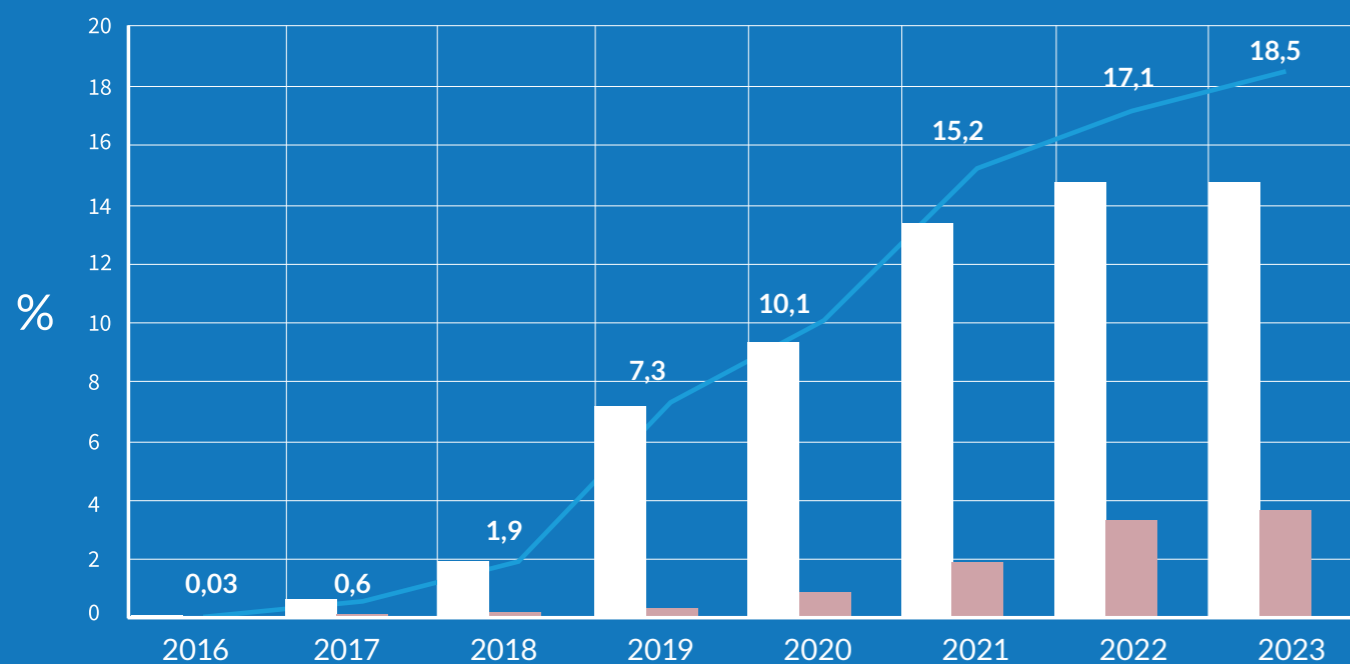
Today, the lead-free alloys with high machinability fit into a regulatory framework that is even more stimulating after the approval of the European Commission Delegated Regulation (EU) 2024/197 of 19 October 2023, published on 5 January 2024, amending Regulation (EC) no. 1272/2008 as regards the harmonised

classification and labelling of certain substances, including lead.

This was an historical and deep green step forward which it was worth to make heavy investments in research and development since the 1990s. The recently-approved regulation is an important concept for sustainability, a tangible landmark for the protection of health and the environment.

Our lead-free alloys contain an amount of lead that does not exceed 0.05%, therefore they fully comply not only with the aforementioned regulation, but also with the limits set by

Sales trend of lead-free alloys with high machinability (% of total sales)



Reach, RoHS and ELV, currently undergoing re-evaluation, that promise to be even more stringent.

For decades **Eural Gnutti** has studied and made sustainable and non-toxic lead-free alloys with high machinability. Our lead-free alloys ensure the same machinability and performance as other metals and represent the sector’s present and future as they are mainly made from recycled aluminium. Furthermore, they are used for large-scale manufacturing in various fields of application such as the automotive industry, aerospace and mechanics in general.

As well as being a pioneer of lead-free alloys, today **Eural Gnutti** is a national and international benchmark for customers in various industries and its alloys have already become a genuine market standard to the point that they have been included in supply specifications of leading

car manufacturers.

Eural Gnutti has always supported its customers in selecting the most appropriate alloy for their needs, paying attention to performance and providing a high-quality, economically sustainable product that enables them to achieve important increases in productivity.

Aluminium, with its infinite recyclability, non-toxic and lightweight properties, tools lifespan, corrosion resistance, electrical and thermal conductivity and high machinability, constitutes the modern metal by far.

Eural Gnutti, in the wake of its tradition, but always looking to the future with dedication, research and skill, has created lead-free alloys with high chip-forming performance that ensure “quality without compromise”, our trade mark that market has always recognised”.

GIORGIO DI BETTA

Sales Director
Eural Gnutti S.p.A.

YEAR	TOTAL	2033	2077	6026LF
2016	0,03			0,03
2017	0,6	0,004		0,578
2018	1,9	0,027		1,868
2019	7,3	0,253		7,020
2020	10,1	0,843	0,003	9,240
2021	15,2	1,892	0,008	13,293
2022	17,1	3,341	0,003	13,757
2023	18,5	3,650	0,083	14,752

1.6 The governance model



GRI 102-18
GRI 102-16

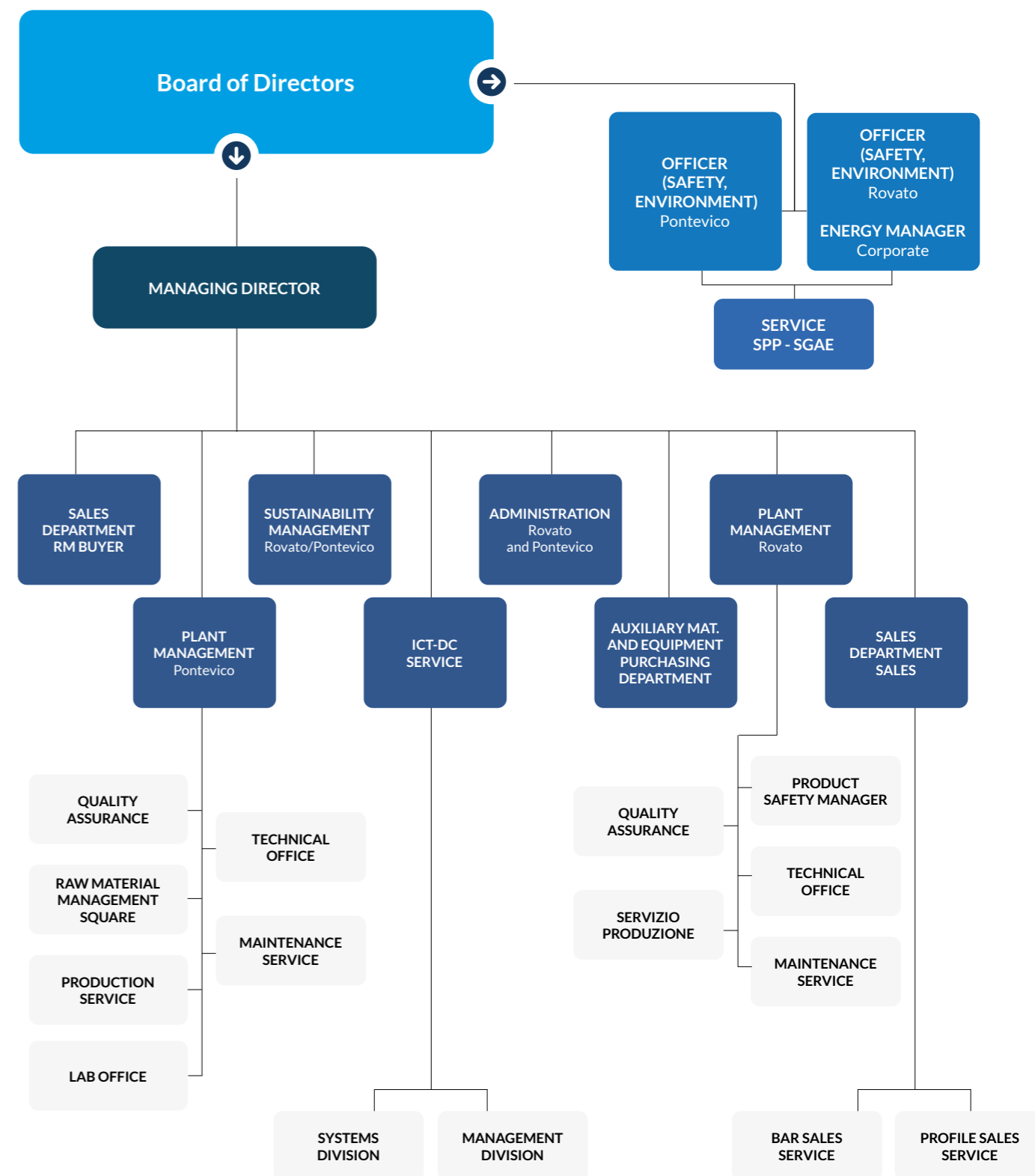
Eural Gnutti is an unlisted joint stock company belonging to the Gnutti family. The Board of Directors is presided over by Paola Gnutti and comprises six members in total. The production sites are managed by the plant manager; the organisational chart includes environment and safety officers with due power of attorney and spending powers.

An Energy Manager, a Head of the Prevention and Protection Service, a Quality Manager, an Environmental Manager and a Sustainability Manager were appointed internally.

Each company function has an identified manager. Company communication is secured through different methods, including: management meetings, office meetings, performance reviews, annual, quarterly and monthly reports, company intranet, shared server files and notice boards in the work areas.

Discussion with workers is always guaranteed.

The company periodically communicates through roundtable discussions with union representatives via Plant Management in order to establish 2nd level agreements, a wage guarantee fund, health and safety.



Partnership

The contribution of **Eural Gnutti** to working groups and technical committees complies with the standardisation bodies and associations:



European Aluminium

Giorgio Di Betta: Vice President Extrusion Division and Vice President Lead Task Force



ISO: International Organization for Standardization

Giorgio Di Betta and Gianfranco Cazzago experts in TC79 SC6+SC9 (Al extrusion group and symbolisation)



CEN: The European Committee for Standardization

Giorgio Di Betta and Gianfranco Cazzago experts in the Working Group 5, TC132: Al alloys and extrusions



UNI: Ente Italiano di Normazione

Giorgio Di Betta and Gianfranco Cazzago experts in the Working Group 5, TC132: Al alloys and extrusions



ASTM: American Society for Testing and Materials

Giorgio Di Betta and Gianfranco Cazzago experts in the B07 (Al alloys and extrusions)



Eurometaux: non-ferrous metals producers and recyclers in Europe

Lead Task Force member and participant



Assomet: National Association of Non-Ferrous Metal Industries



CENTROAL: Italian Aluminium Centre

Giorgio Di Betta: member of the Board of Governors



raMET: Limited Liability Consortium for Environmental Research for Metallurgy



CONFINDUSTRIA Brescia: Industrial Association of Brescia



Quality Policy

It is **Eural Gnutti** policy to:

- Provide products with a continuously improving quality standard guaranteeing our customers efficiency, reliability and quality of products and processes that strictly adhere to established schedules and at fair market price;
- Support all customer expectations in product-related technological choices by lending our experience and ensuring continuous research into new products;
- Have a service profit so as to ensure improved process performance in order to face the competition on the global market, with focus on internal reduction of passive costs and continuous improvement of plant efficiency and productivity;
- Consolidate our presence on traditional markets with a strong propensity for expanding towards new global markets;
- Improve product quality with greater involvement and development of suppliers and their production processes in order to continuously improve reliability.
- Improve the work environment and plant and production process safety by trying to best meet all the needs of internal staff and optimising working conditions in full compliance with all mandatory requirements;
- Increasingly include all staff in the understanding that only with the joint commitment of everyone can the goals and expectations for obtaining maximum customer satisfaction be achieved and improved.

Risk Management and the Internal Control System

BUSINESS CONTINUITY

Eural Gnutti has adopted a **Business Continuity** process with the aim of outlining responsibilities, methods and tools to be applied in the event that the company finds itself having to manage an event with a particular impact on business, i.e., on that could affect or jeopardise business continuity.

The **Business Continuity** process, applicable to the Rovato and Pontevico sites, refers to the standard **UNI EN ISO 22301 – Company Security - Business Continuity Management Systems - Requirements**.

ORGANISATIONAL STRUCTURE ACTIVATED SHOULD A CRITICAL EVENT OCCUR

CRISIS MANAGER

Appointed by the Managing Director, in regular situations they are the person responsible for ensuring that the Continuity Plan is formalised, updated, verified and efficient.

In emergency situations they are the person who supports the Crisis Committee and are responsible for managing communications with institutional counterparts and coordinating and monitoring Emergency Teams' activities.

CRISIS COMMITTEE

In emergency situations the committee declares/lifts the state of crisis and outlines strategic decisions for managing the emergency. Members are defined as established by the 'Business Continuity' procedure.

EMERGENCY COMMITTEE (PROCESS MANAGERS)

It includes the company process managers.

In ordinary situations, they support the Crisis Manager and help establish guidelines, objectives and priorities for managing Business Continuity.

BUSINESS EMERGENCY TEAM

A team of people who implement the operative procedures outlined in the Continuity Plan and who keep the Crisis Managers constantly up to date and, unless otherwise specified, overlap with the Emergency Committee.

Business Management

CODE OF ETHICS

Eural Gnutti firmly believes in the importance of expressing and implementing a strong commitment every day for ethical and responsible corporate behaviour. Thus, it has a Code of Ethics, a guidance document for each individual who works with and for the organisation, that establishes the standards and principles that stakeholders must follow. This undertaking serves to ensure that all actions taken are in line with the goals that **Eural Gnutti** has set.

Eural Gnutti has adopted an organisation, management and control model pursuant to Legislative Decree. no. 231/2001.

Eural Gnutti has a **Whistleblowing Procedure** (Legislative Decree 231/2001) in place in order to protect people who report wrongdoing. The following are the procedure's aims:

- » Give clear guidance to the person who wishes to report wrongdoing on the operating procedures for whistleblowing.
- » Inform whistleblowers of the forms of protection and confidentiality accorded and guaranteed to them.

Eural Gnutti has set up a communication channel through which it is possible to send comments, recommendations, reports and complaints regarding the company organisation. Reports are sent to the email address segnalazioni.odv.ural@gmail.com and handled by the **Company's Supervisory Board** (SB).

With regard to the 2023 reporting year, **Eural Gnutti** declares to not have received fines, judgments, or sanctions due to failure to comply with applicable law; to not have paid any contribution to political parties or governing agencies.



CONSULT THE CODE OF ETHICS HERE

PRIVACY

Eural Gnutti in its capacity as controller of numerous personal data, has drawn up a document of compliance pursuant to the General Data Protection Regulation - Regulation (EU) 2016/679 for the protection of confidential information. For information on the processing of personal data and to exercise your rights thereon or for information on these rights you can write to privacy@ural.com.

COMMITMENT TO RESPECT HUMAN RIGHTS

Eural Gnutti has adopted a Human Rights Policy. **Eural Gnutti**, through its Social Policy, intends to publicly declare its commitment to respecting the human rights of everyone who might be affected by its activities, both internally and externally.



CONSULT THE SOCIAL POLICY HERE

Eural Gnutti operates in full respect for the dignity of all its employees and collaborators, as well as offering mutually beneficial conditions and opportunities to its suppliers.

Aluminium as a strategic material for decarbonisation and clean technology



GRI 301-2

In 2019 the European Commission started the **European Green Deal**, a package of policy initiatives which aims to set the EU on the path to a green transition, with the ultimate goal of reaching **climate neutrality by 2050**.

Aluminium is considered a strategic raw material in the context of the European Green Deal thanks to its various properties that make it an attractive option for sustainability initiatives.

To fully align itself with the Green Deal goals, the aluminium industry is working to further reduce its carbon emissions by adopting renewable energy sources, optimising production processes, expanding recycling capacities and through technological innovation. These efforts are essential to ensure that aluminium can be used sustainably and can

contribute to the transition towards a low-carbon economy.

It is estimated that demand for aluminium will increase by 30% by 2040, compared to 2022 values, due to the large-scale adoption of **clean technologies** such as solar panels and electric vehicles.



RECYCLABILITY

Aluminium can be completely recyclable without losing any of its quality. Recycling aluminium only takes 5% of the energy needed to produce primary aluminium, significantly reducing CO₂ emissions.



LIGHTWEIGHT

Aluminium is light and resistant which makes it ideal for applications in which lighter weights can save more energy, such as in transportation (automobiles, trains, aircrafts).



ENERGY EFFICIENCY

Use of aluminium in buildings and infrastructure can improve energy efficiency, for example using windows with aluminium frames can improve heat insulation.



RENEWABLE ENERGY

Aluminium is a key component in many renewable energy technologies, such as solar panels and wind turbines.



CIRCULAR ECONOMY

Aluminium supports the concept of circular economy, in which materials are reused and recycled to create a closed circle, reducing the need to mine and produce new materials.

Further information on the topic can be found on the website and in the publications of European Aluminium.

2. Economic sustainability

2.1 ECONOMIC AND COMMERCIAL PERFORMANCE

⊕ CIRCULAR ECONOMY

2.2 QUALITY AND INNOVATION

2.3 THE SUPPLY CHAIN



2.1 Economic and commercial performance

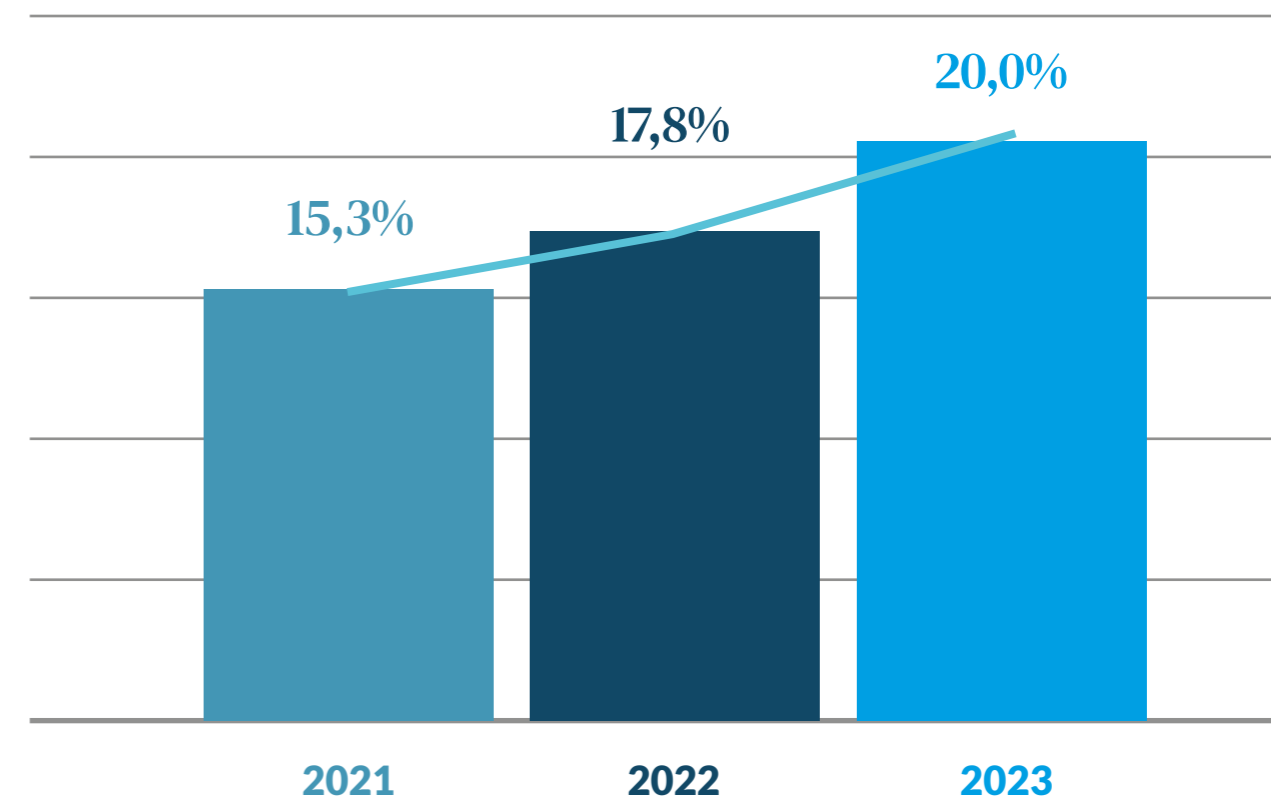


GRI 201-1

Direct economic value generated and distributed

DIRECT ECONOMIC VALUE GENERATED BY REVENUE	309.504.698,52 €
EMPLOYEE WAGES AND BENEFITS	27.179.525,98 €
OPERATIONAL COSTS	189.718.672,86 €
COMMUNITY INVESTMENTS	212.740,00 €
PAYMENTS TO PUBLIC ADMINISTRATION	18.925.539,52 €
PAYMENTS TO CAPITAL PROVIDERS	15.356.804,90 €
ECONOMIC VALUE DISTRIBUTED	251.393.283,26 €
ECONOMIC VALUE RETAINED	58.111.415,26 €

Production indicator of Lead-Free Bars (lead-free bars produced in tonnes/bars produced in tonnes)



Circular Economy

Circular economy is a sustainable model that aims to minimise waste and use of natural resources. Compared to linear economy, based on a “take, make, waste” approach, circular economy tends to create a closed system that optimises the use of resources.

Closing the cycle with circular economy

Integrating materials already in the loop into production processes is one of the key aspects of circular economy and offers various strategic and environmental advantages:

REDUCTION IN RAW MATERIAL EXTRACTION:

using recycled materials reduces the need to extract new natural resources, preserving ecosystems and reducing the environmental impact associated with mining.

SECURITY OF SUPPLY:

diversifying material sources lowers the dependency on primary raw materials which might be subject to fluctuations in price or limited supply due to political or natural factors.

LOWER ENERGY CONSUMPTION AND COSTS:

recovering and recycling materials normally takes less energy than producing new materials from virgin resources. For example, recycling aluminium can take only 5% of the energy required for producing it from scratch.

CARBON FOOTPRINT REDUCTION:

as the recycling process is generally less intensive in terms of energy there is a significant reduction in CO₂ emissions compared to production processes that use virgin raw materials, thereby contributing towards global goals of reducing greenhouse gases.

“Focus on the circular economy is the result of awareness developed over the years throughout the company, but also of a vision that has led us to predict future trends”



INNOVATION AND COMPETITIVENESS:

integration of recycled materials can stimulate innovation in terms of designing products and production processes, resulting in companies developing more efficient and competitive solutions.

CORPORATE SOCIAL RESPONSIBILITY:

companies that adopt circular practices demonstrate a commitment towards sustainability, gaining favour with consumers and boosting their reputation.

CREATION OF NEW MARKETS:

increased demand for recycled materials can create new markets and production chains based on recovering and recycling resources.

By using mainly recycled materials in our production processes, instead of relying exclusively on ‘primary’ raw materials, we are working towards achieving an objective that is twofold: less exploitation of the planet’s resources and reduction in our carbon footprint.

Particular attention must be paid to reuse post-consumer aluminium scrap. This is waste generated by end consumers after having purchased and used a product.

Eural Gnutti is committed to integrate sustainable development strategies and promoting circular economy into its business activities; this approach enables it to reduce its environmental impact and increase its long-term resilience.

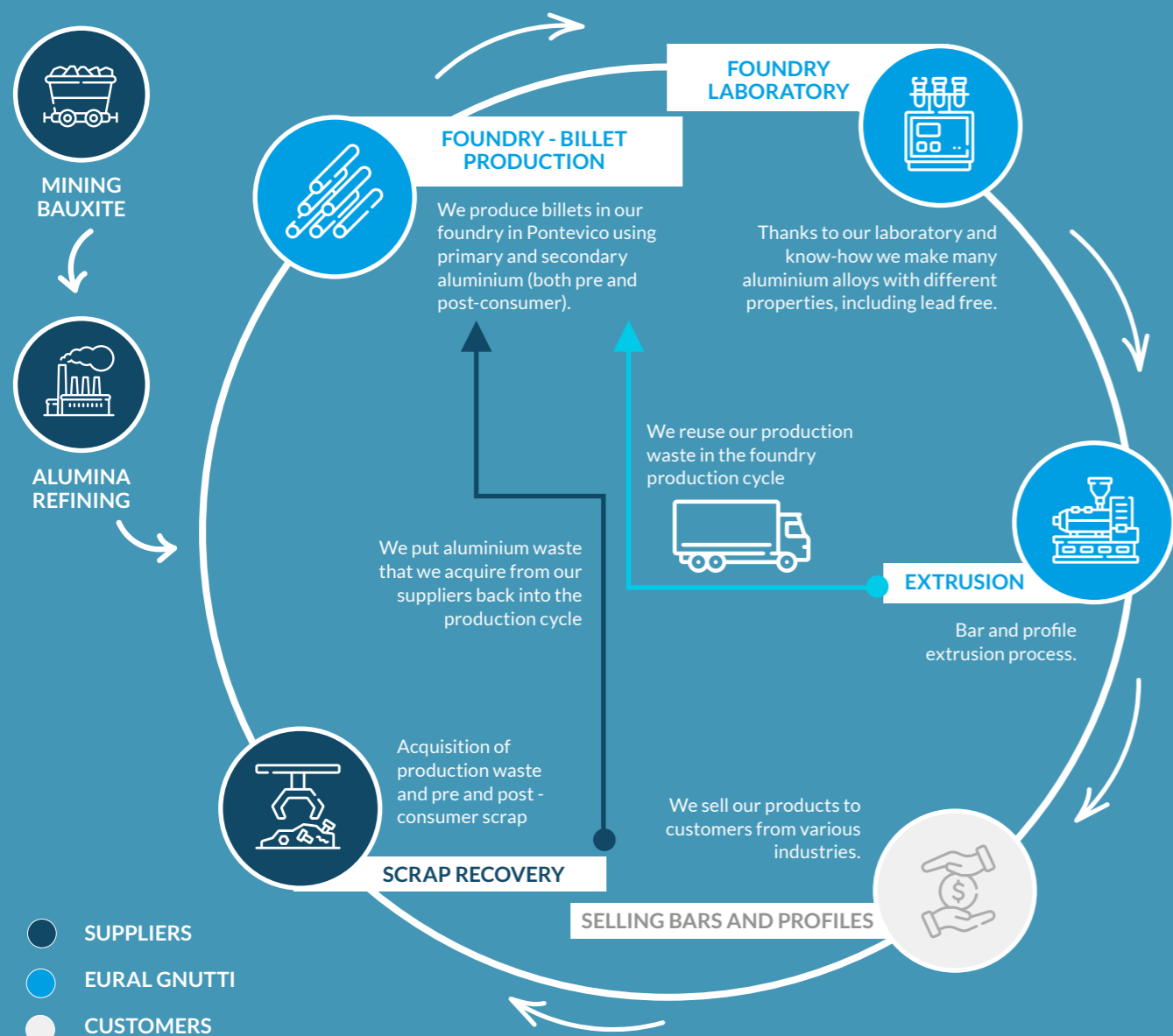


“We are forerunners in the circular economy because we turned our attention to recycling scrap early on. Lead? We were progressively cutting it from production long before it became a common theme”



GRI 301-2

Eural Gnutti adopts the circular economy principles, efficiently managing to reintegrate the majority of its aluminium waste products into the production cycle.



Recycling aluminium means reducing consumption of raw material from mining and refining processes, thus saving precious resources and decreasing the total energy consumption of an aluminium product over its entire life cycle, therefore reducing our carbon footprint.

The fundamental properties of aluminium don't change with mechanical machining: it can be recycled many times over without losing its original properties, ensuring **infinite recyclability**.

Since 1888, over **1 billion tonnes** of **primary aluminium** have been produced:

75% of which is still **in use**

In total, recycling accounts for about **35%** of aluminium production worldwide

Recycling aluminium only takes about **8%** of the energy required for making primary aluminium

Each tonne of recycled aluminium, in comparison to a tonne obtained from mineral ores, **can save:**

- 24 barrels** of crude oil equivalents;
- Over **15 tonnes** of fresh or seawater
- Over **9 tonnes** of CO₂ equivalent

Source: Aluminum Extruders Council

Materials recycled into billets

Use of recycled materials in Eural Gnutti S.p.A. production in 2023

- Pre-Consumer Recycled **47%**
- Post-Consumer Recycled **27%**
- Primary **26%**

The 2023 production data show that only 26% of primary aluminium was used for making billets. The remaining 74% is pre and post-consumer recycled material.

Eural Gnutti is committed to further increasing the percentage of recycled material used in its products. This is demonstrated by the lead-free alloys with high machinability, developed in order to use a considerably higher amount of recycled material than current alloys on the market.

2.2 Quality and innovation

“Aluminium with technology”

Eural Gnutti is always looking towards continuous innovation.

In 1968 the Gnutti family foresaw the innovative potential of aluminium, considered at the time to be more insignificant than other metals. And thus began a long journey of research and improvement that is still going on to this day.

Eural Gnutti was one of the first companies to create lead-free alloys with high machinability, basing its business not only on quality, but also on sustainability.

The company does not intend to halt its continuous innovation process, for this reason it has set a series of goals in order to further improve the features of its products, for example carrying out **Life Cycle Assessments (LCAs)** and continuing to develop increasingly high performing lead-free alloys with high machinability.

“In addition to creating added value and the constant pursuit for innovation, we shall continue in the direction of sustainability and shall gear our research towards it. We strive to anticipate the needs of global markets, turning them into new products and services in order to be constantly at the forefront so that we are able to meet all our customers’ needs”

PAOLA GNUTTI,
CEO Eural Gnutti S.p.A.



“Eural Gnutti guarantees high-quality products and a service without compromise that remain constant over time”



2.3 The supply chain

Eural Gnutti has an extensive supply chain (around 300 companies), at both a national and international level.

Suppliers are key elements for reaching the company’s goals, developing mutual and long-term partnerships with them.

Eural Gnutti carefully qualifies its suppliers through its own **Quality Department** with the help of the following tools:

Supplier Qualification Questionnaire:

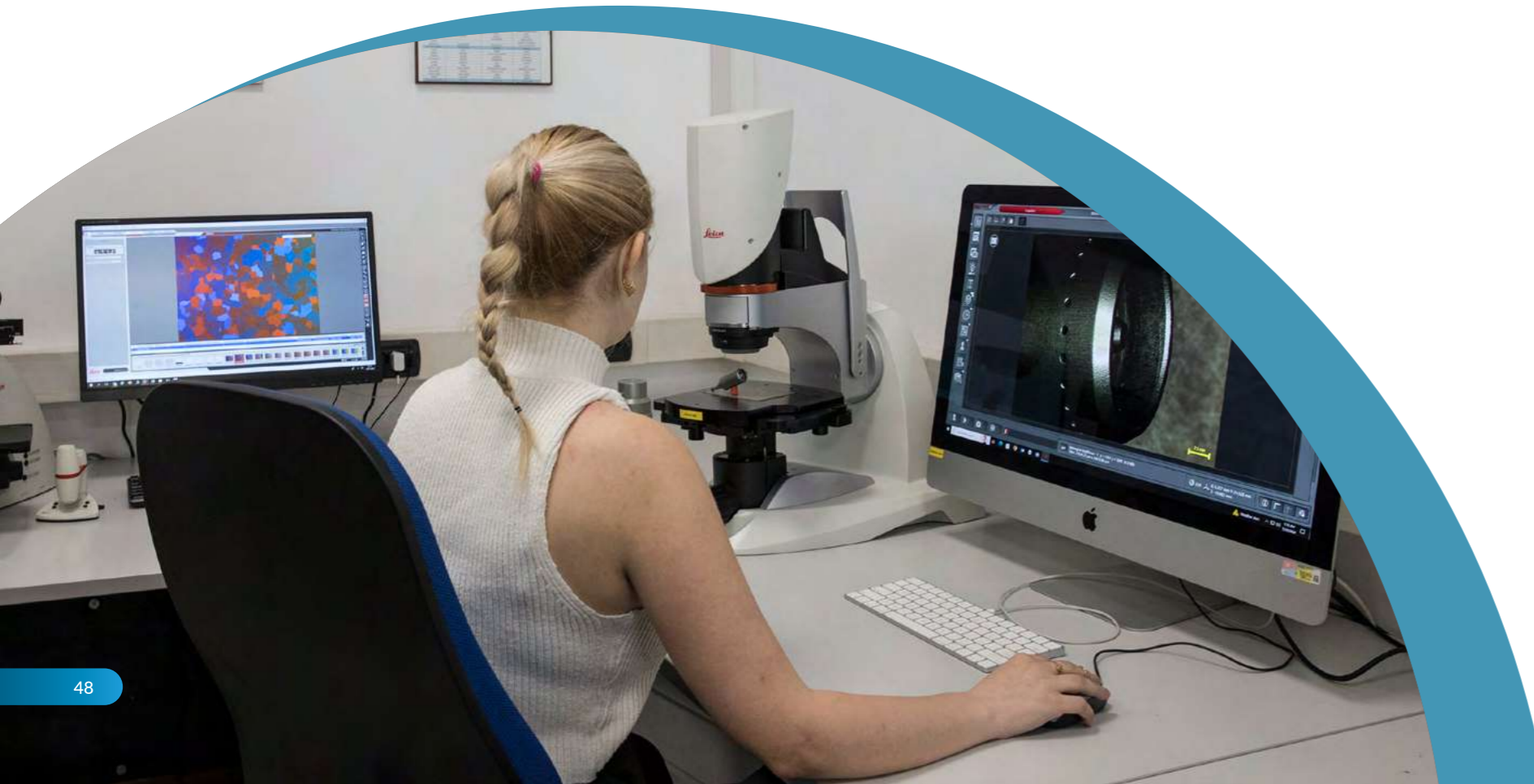


**CONSULT HERE
SUPPLIER QUALITY MANUAL**

The Eural Gnutti S.p.A. supplier quality manual

The purpose of the manual in question is to:

- Regulate activities between the business and the suppliers by establishing a partnership with a view to creating mutual value
- Outline the principles governing the relationship between the company and the suppliers
- Clarify the tools required to the supplier
- Collaborate with the supplier in terms of sustainable development, sharing and collaborating on the creation of a sustainability policy



3. Social sustainability

3.1 PEOPLE

3.2 STAFF TRAINING AND INVOLVEMENT

3.3 PROTECTING WORKERS' HEALTH AND SAFETY

3.4 SUPPORTING LOCAL ORGANISATIONS

3.5 CORPORATE WELFARE AND EMPLOYEE PROGRAMMES

⊕ SUSTAINABILITY, QUALITY AND ETHICS:
THE CHALLENGES AND OPPORTUNITIES
FOR FUTURE BUSINESSES



3.1 People

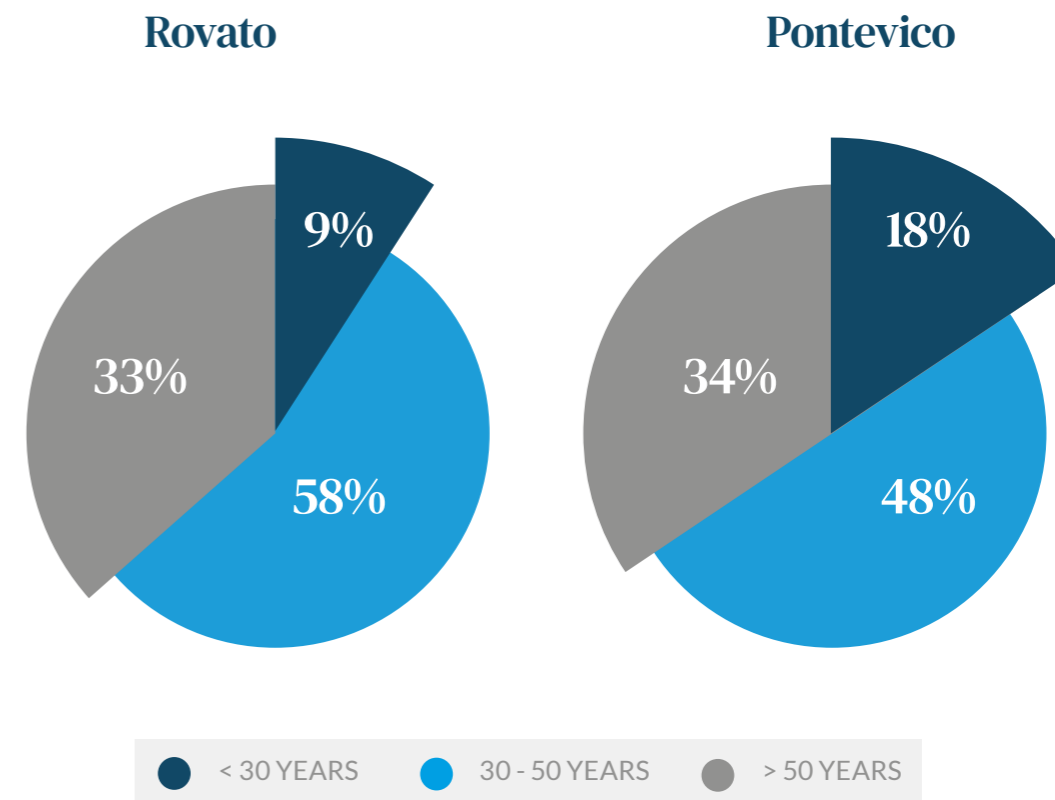
“Our employees are our first resource, the company’s main value. We look after their health, but also the social environment that they operate within”



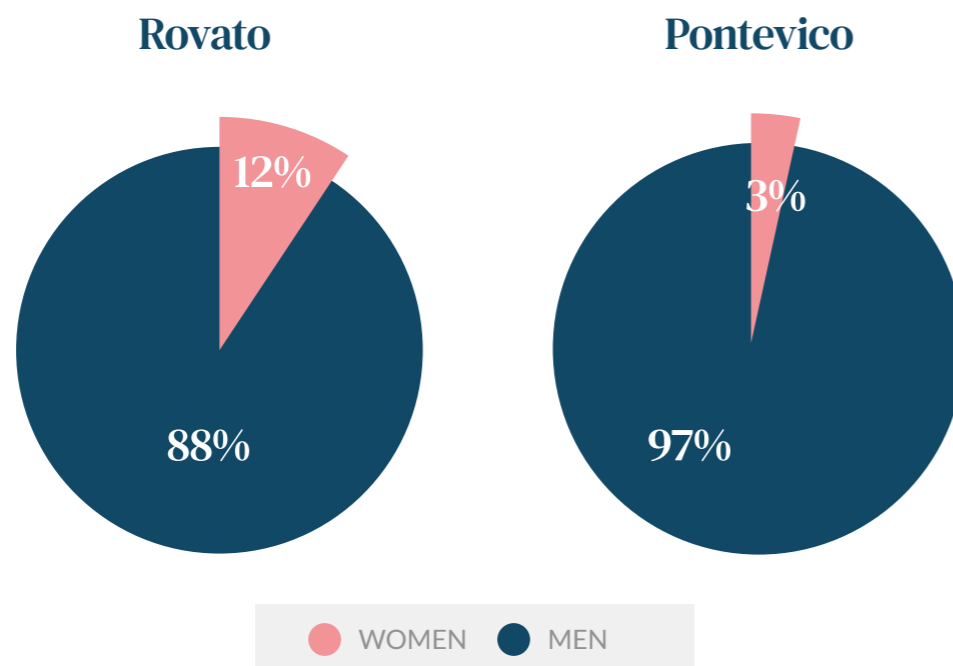
GRI 102-7
GRI 102-8
GRI 405-1

2023 INDICATOR	ROVATO	PONTEVICO
TOT NUMBER OF EMPLOYEES	321	95
% OF NON-EU WORKERS	8%	7%
% OF WORKERS WITH A DISABILITY	4%	1%

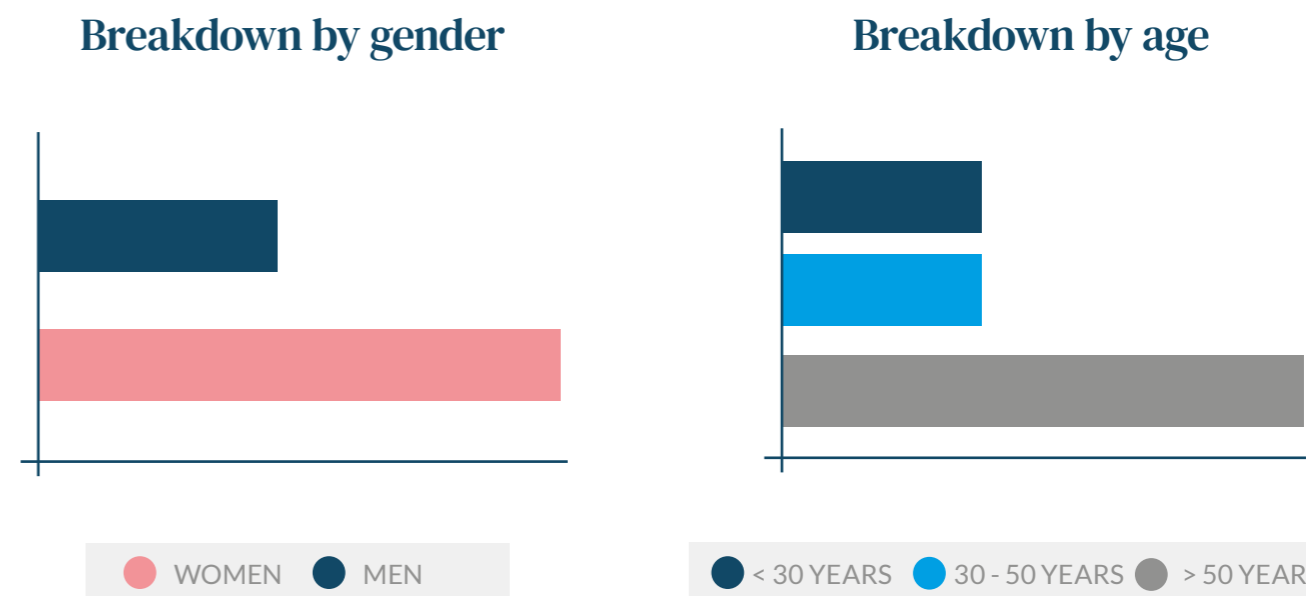
Employee breakdown by age



Employee breakdown by gender



Governing bodies



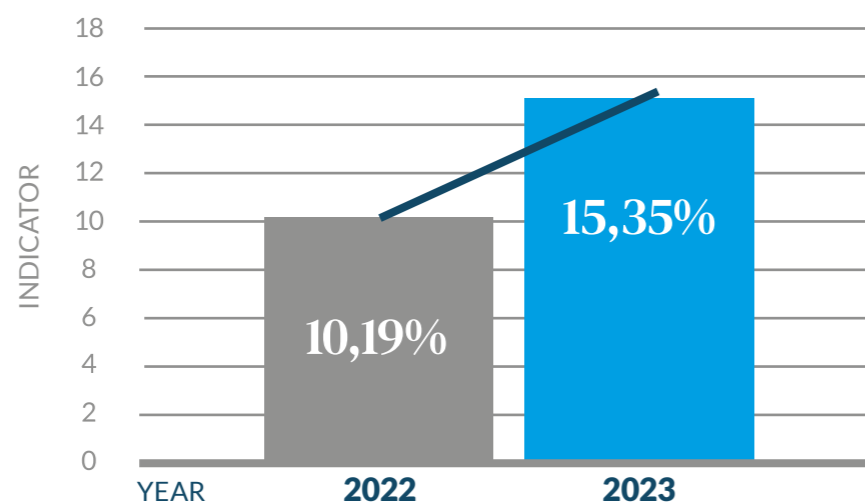
3.2 Staff training and involvement



GRI 403-5
GRI 404-1
GRI 404-3

INDICATOR	2022	2023
TOT. HOURS OF TRAINING GIVEN	4.240	6.388
HOURS OF TRAINING GIVEN/EMPLOYEE	10,19	15,35

Hours of training given/employee



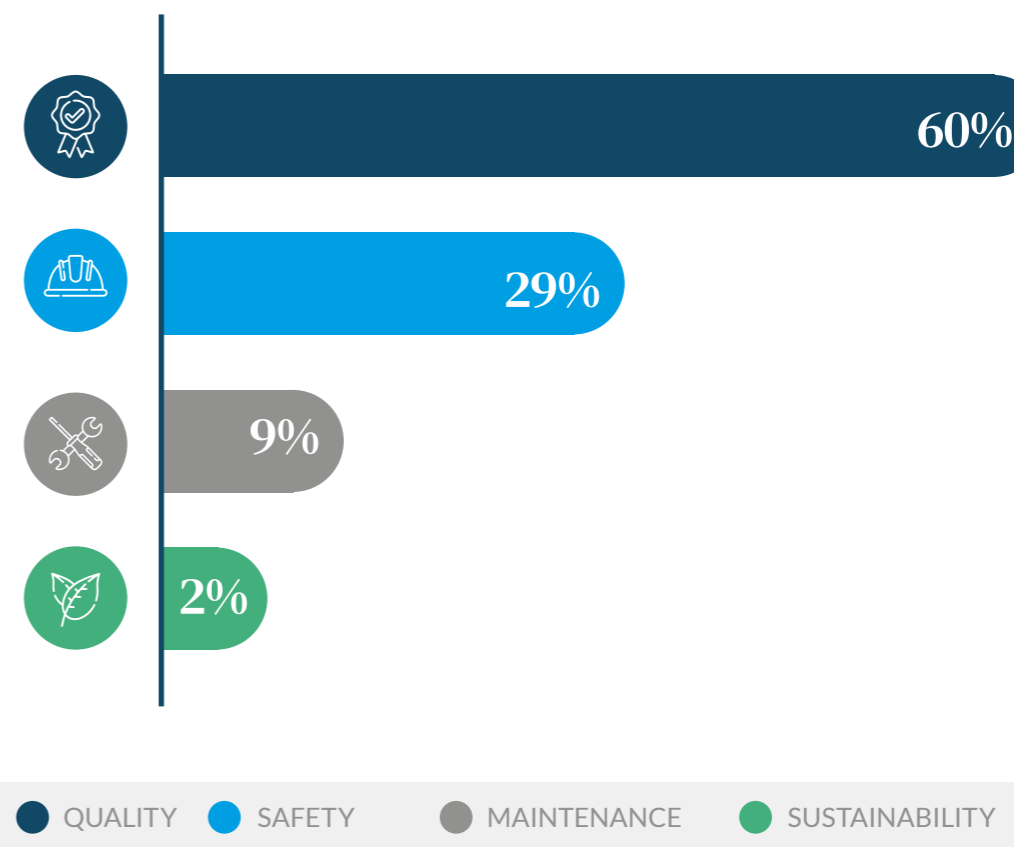
In 2023 **Eural Gnutti** significantly increased the number of hours of training per employee.

The type of courses to be taught were chosen based on an analysis conducted by representatives of each department. Each manager assesses the techni-

cal skills of the workers in their area (as well as behavioural skills for the managers) by giving each activity a mark.

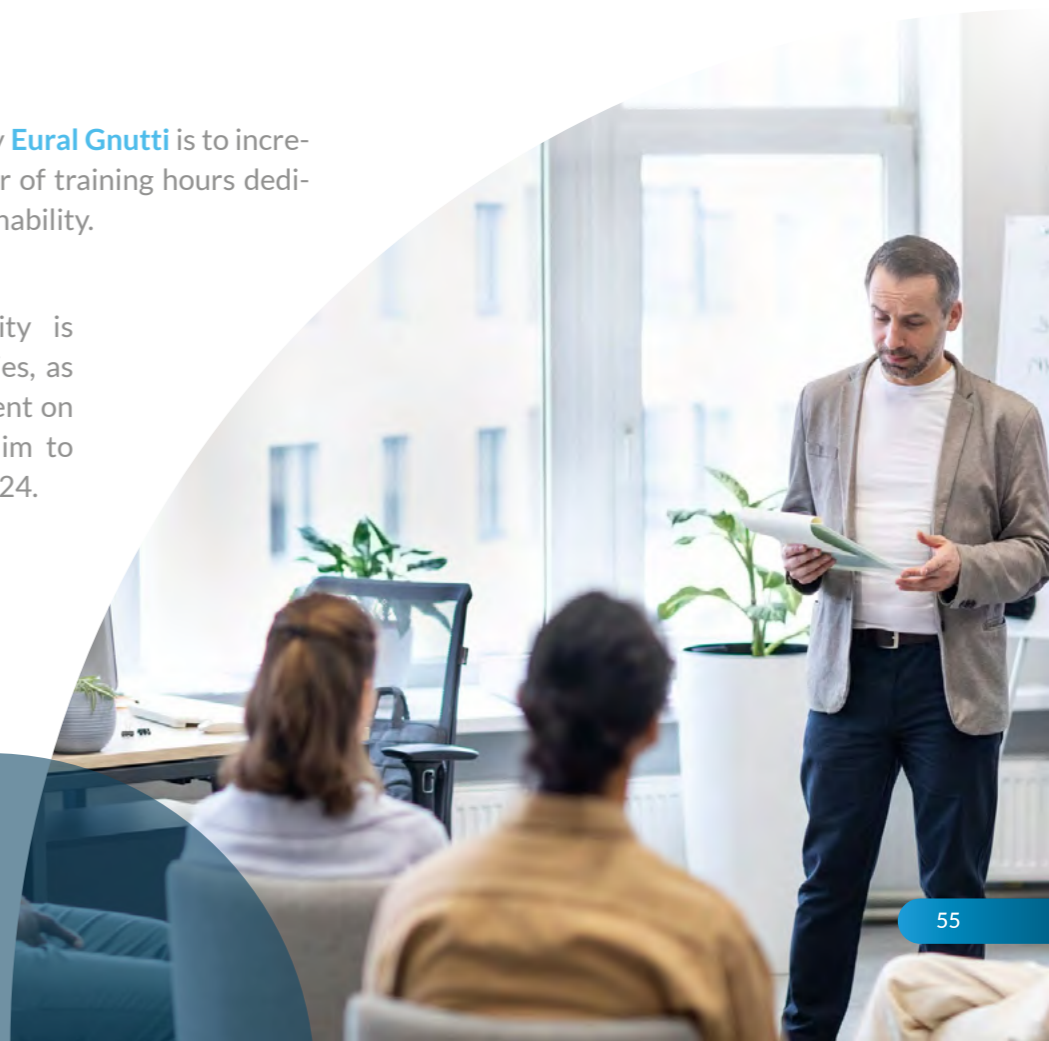
This helps highlight where certain knowledge/skills need to be expanded, from which training plans can be created.

2023 training hours breakdown



One goal set by **Eural Gnutti** is to increase the number of training hours dedicated to sustainability.

Commitment to sustainability is one of the company's priorities, as shown during the training event on 13 October 2023 and the aim to achieve ASI certification in 2024.



3.3 Protecting health and safety



GRI 403-1
GRI 403-2
GRI 403-4
GRI 403-6
GRI 403-7
GRI 403-9
GRI 403-10

One of the priorities that **Eural Gnutti** has is protecting its workers' health and safety, aiming to eliminate incidents and accidents in the workplace by applying prevention measures and developing an internal management system.

In 2023 **Eural Gnutti** met the requirements of the standard **UNI EN ISO 45001:2023**, in order to develop a Safety Management System and adopt good practices that are promoted and shared with its employees but also with its suppliers.

ACCIDENTS		2023
ROVATO	Severity rate (Tot. no. of days lost due to accidents/no. of hours worked) x 1.000	0,4
	Frequency Rate (no. of accidents/no. of hours worked) x 1.000.000	21,4
PONTEVICO	Severity rate (Tot. no. of days lost due to accidents/no. of hours worked) x 1.000	0,6
	Frequency Rate (no. of accidents/no. of hours worked) x 1.000.000	14,4



3.4 Supporting local organisations



GRI 413-1

During 2023 **Eural Gnutti** contributed towards the business of different local associations in Brescia with the donations listed below.



Donation to Civil Hospitals of Brescia to support mental health support projects

Donation to the Croce Bianca di Brescia (White Cross of Brescia) - Ponteviso division - to buy an ambulance



Donation to Onlus VAD Madre Eugenia Menni - Voluntary Home Care Services and Hospital

Donations to Associazione Priamo A.P.S., an association for social development and support



Donations to local Churches


Donations to Rovato Soccorso Onlus, an ambulance service in Rovato



Donation to Club Inner Wheel Valtrompia Carf (Brescia Community Foundation) to support K-Pancreas scientific research

Sponsorship of sports associations and other local cultural activities

Eural Gnutti supports sport and youths in its area through the following associations

 **ASD U.S. Pontevichese Calcio
ASD Rovato Calcio
Football club Lumezzane**

 **A.S. Pontevico (Volleyball)**

 **A.S. Rugby Rovato**

 **Polisportiva Dil. Pontevico Basket**

Supporting local cultural activities

Furthermore, Eural Gnutti contributed to a number of local cultural activities, sponsoring amongst others

 **the PourParler Festival in Rovato**

 **Cultural/Franciacorta literary association
"in vino veritas"**



3.5 Corporate welfare and employee programmes



GRI 401-2

Eural Gnutti intends to promote the well-being of its employees, therefore has invested in corporate welfare programmes.

Eural Gnutti has planned a welfare programme for 2023, for a total amount of approximately €1,3 millions, dedicated all employees in order to support its workers in a year in which the cost of living heavily impacted the household economy.

General welfare by gender

Women
41

Men
353



Welfare for all employees

Sustainability, quality and ethics: the challenges and opportunities for future businesses



GRI 404

On 13 October 2023 Eural Gnutti organised a multidisciplinary training event involving all the staff from the Rovato plant.

Ten stations were set up on the site, divided into two circuits of five themed stations; ten mixed groups in terms of gender and role.

The following were the topics covered throughout the day:

» PRODUCTION
QUALITY

» ORGANISATION OF
WORK STATIONS

» SUSTAINABILITY

» ETHICAL BEHAVIOUR
AND COMPANY
KNOW HOW

» BEHAVIOURAL
SAFETY



The sustainability station

The activities carried out at the sustainability station have made it possible to achieve a goal that is twofold:



INFORM AND TRAIN STAFF
ON SUSTAINABILITY ISSUES
AND HOW THE COMPANY IS
TACKLING THEM

COLLECT IMPORTANT
INFORMATION FOR THE
PURPOSE OF AN INTERNAL
MATERIALITY ASSESSMENT

4. Environmental sustainability

4.1 ENVIRONMENTAL SUSTAINABILITY
POLICIES AND GOALS

4.2 RAW MATERIAL AND ENERGY

⊕ SOLAR

4.3 GHG EMISSIONS

4.4 WASTE

4.5 WATER RESOURCE

4.6 WATER DISCHARGES

4.7 ATMOSPHERIC EMISSIONS

4.8 MANAGEMENT OF SPILLS AND LEAKS

4.9 BIODIVERSITY AND LAND USE

4.10 NOISE EMISSIONS AND CONTAINMENT SYSTEMS

4.11 PLAN FOR REDUCING EMISSIONS, POLLUTANTS,
AND IMPACTS ON WATER RESOURCES, WASTE,
AND CONTAMINATIONS



4.1 Energy and environment policy



GRI 102-20

It is **Eural Gnutti** policy to:

- 1 Ensure that its activities are carried out in compliance with current legal provisions and any endorsed codes of practice.
- 2 Make every effort, in terms of organisation, operation and technology, to continuously improve its energy and environment management system, to prevent soil, water and air pollution and continuously improve their quality, and to optimise energy performance.
- 3 Outline energy and environmental goals and plan activities to reach them, integrating them into the operational management of the factories.
- 4 Outline goals to promote renewable energy in order to face climate change and reduce greenhouse gas emissions. Make every effort to increase supply of renewable and sustainable energy that does not deplete natural resources and to continuously reduce carbon emissions.
- 5 Create technologically cutting-edge products that have a minimum environmental impact and energy footprint, also taking into account the life cycle.
- 6 Reduce, where technically possible and economically sustainable, every negative impact that its activities, products and services have on the environment.
- 7 Reduce, where technically possible and economically sustainable, energy consumption of its activities by using goods supplies and services with the best energy performance and optimising processes.
- 8 Minimise water and raw material consumption, promoting recovery and recycling.
- 9 Minimise waste production, encouraging recovery where possible.
- 10 Make every effort through common actions and strategies aimed at reducing greenhouse gases that contribute towards global warming and climate change, in compliance with current international agreements and regulations.
- 11 Take on board the explicit and implicit needs of customers and stakeholders in general.

4.2 Raw material and energy



GRI 301-2
GRI 302-1
GRI 302-3

Promotion of energy saving materialised in the rational use of energy and the subsequent reduction in consumption.

Eural Gnutti is certified according to the ISO 50001:2018 standard for its energy management system. Timely maintenance and replacement of obsolete machinery and systems have enabled energy consumption to be optimised over the years.

INDICATOR	2023
Total energy consumption (GJ)	592.177,23
Energy intensity (GJ/€ ml)	0,0019
Direct energy consumption	81%
Indirect energy consumption	19%
TEP energy intensity (TEP/Tonne)	0,227
% self-produced electricity of total used	0,23%
Water Withdrawal (m³)	455.561
<i>of which: from an aqueduct</i>	30.619
<i>of which: from a well</i>	424.942
Waste water (m³)	222.545
% of recycled aluminium	74%



Solar

“Sustainability is in our DNA”



GRI 302-4

POSITION	TOT. SURFACE AREA COVERED	NOMINAL POWER (PEAK)	NO. OF UNITS	POWER PER UNIT
On the ground	60.000 m ²	4.392 kWp	7.200	610 W
On the roof	27.000 m ²	1.480 kWp	3.217	460 W

In 2023, Eural Gnutti significantly increased its use of renewable energy by installing 10,217 solar panels.



In 2024, all photovoltaic systems installed at the Rovato facility are expected to be connected. When operating at full capacity, these systems will produce about 23% of the electricity required by the site.



4.3 GHG emissions



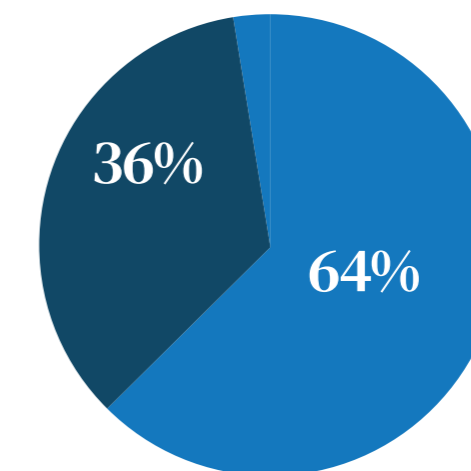
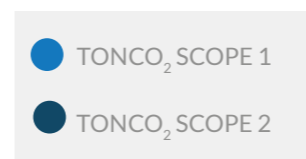
GRI 305-1
GRI 305-2
GRI 305-5

Eural Gnutti reports its direct (Scope 1) and indirect (Scope 2) GHG emissions using the GHG Protocol Corporate Accounting and EU ETS Scheme as a reference.

Eural Gnutti is working to analyse some of its Scope 3 emissions; currently it is able to report Scope 3 emissions from logistics upstream of its own processes.

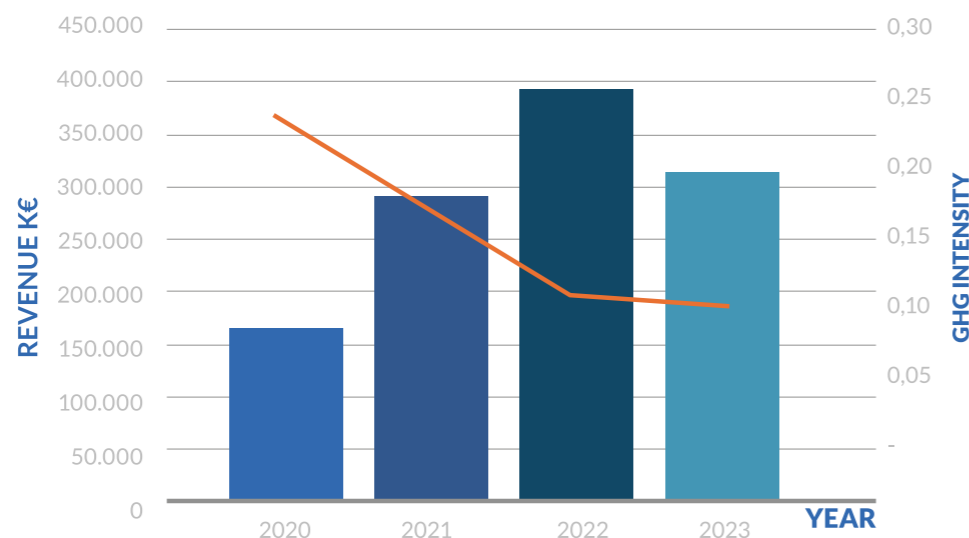
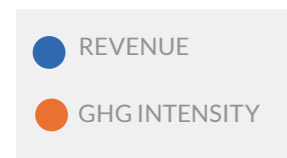
		TOTAL EMISSIONS SCOPE 1 + SCOPE 2			
		2020	2021	2022	2023
CO ₂ Emissions Scope 1	ton CO ₂	26.573	33.445	32.019	24.741
CO ₂ Emissions Scope 2	ton CO ₂	15.269	19.026	18.772	13.914
CO ₂ Emissions Scope 1 + Scope 2	ton CO ₂	41.842	52.471	50.791	38.655
Revenue	k€	170.856	288.513	393.200	310.339
Emissions Scope 1 per Revenue	ton CO ₂ /k€	0,16	0,12	0,08	0,08
CO ₂ Emissions Scope 2 per Revenue	ton CO ₂ /k€	0,09	0,07	0,05	0,04
CO ₂ Emissions (S1+S2) per Revenue		0,24	0,18	0,13	0,12
Improvement Year N vs Year N-1			-26%	-29%	-4%
Improvement Year N vs Baseline 2020			-26%	-47%	-49%

GHG emissions



The majority of GHG emissions come from direct energy consumption (Scope 1), and in particular are connected to use natural gas in production processes.

GHG Intensity Scope 1 e 2



ETS Directive Emission Trading



Eural Gnutti sites are subject to the Emission Trading regulation (Legislative Decree 47/2020); both sites have asked the National ETS Committee to be considered Small Emitters (SE) pursuant to Resolution 119/2019. The request was approved with Resolution 23/2021 of 4 March 2021, using Method A to determine allowable emissions.

Rovato and Pontevico are considered, as of 1 January 2021 and until 31 December 2025, Small Emitters based on their average emissions from 2016-2018 which, for both sites, remained lower than 25,000 tonnes of CO₂/year. The average annual emissions from the 2018-2020 period and the 2021-2023 period were also both lower than 25,000 tonnes of CO₂/year.

Emissions allowed in 2021 - 2025

- » Determined using method A and therefore on the basis of the 2014-2018 average activity levels.
- » Emission levels must stay below 25,000 tonnes of CO₂/year, per site, to remain Small Emitters.

The emissions reported in 2023 are lower than the allowable level of emissions.

The “Fit for 55” package, submitted as part of the *European Green Deal*, outlines the EU’s journey to reducing its net greenhouse gas emissions by at least 55% by 2030, compared to 1990 levels, and to reach **climate neutrality** by 2050.

On 25 April 2023 the Council of the European Union adopted five legislative acts, aiming to increase ambition of emissions reductions by 2030 in sectors covered by the Union’s Emission Trading System (EU ETS) to **62%** compared to 2005 levels.

What does Eural Gnutti S.p.A. intend to do

We undertake to:

Contribute to reducing the environmental impact of the aluminium sector by investing in research into increasingly sustainable alloys, thus ensuring that high technical performance is maintained.

Put our experience and technical knowledge at the service of aluminium sector regulatory bodies in the pursuit of benefits for the environment and people, trying to limit any resulting negative impacts.

Pursue decarbonisation policies by introducing and progressively increasing renewable energy sources, including self generated, in our production processes.

Reduce the carbon footprint of our process and our products by increasing waste collection and recycling.

4.4 Waste



GRI 306-3
GRI 306-4
GRI 306-5

Waste management strategy at Eural Gnutti S.p.A.

The waste management strategy implemented at **Eural Gnutti** is defined according to legal guidelines and is outlined in the following methods.

Priority Criteria for Waste Management - Article 179 of Legislative Decree 152/2006

Waste management must respect the following hierarchy:

- » prevention;
- » preparation for reuse;
- » recycling;
- » other recovery methods, such as energy recovery;
- » disposal.

Regarding prevention and waste reduction, **Eural Gnutti** can contribute through:

Constant attention is needed to **minimize waste** generation at the source.

Designing highly workable alloys that optimize downstream production processes and minimize waste during the processing of bars. Additionally, the reduced stress on tools in the machines that work with aluminum bars helps to reduce the waste potentially generated by tool wear.

Developing and adopting new technologies can improve the efficiency of waste management processes and reduce their environmental impact.

In the foundry's business processes, "End of Waste" (Article 184-ter of the TUA) and "by-products" (Article 184-bis of the TUA) are used as raw materials, recovered internally or purchased externally; therefore, they are not considered part of the company's waste management.

- Production waste from the Rovato site and some **Eural Gnutti** clients (pre-consumer aluminum scrap) is classified as by-products (Article 184-bis of the TUA) and used as raw material in the Pontevico foundry. A waste classified as a by-product effectively avoids waste production since it directly re-enters the production cycle as raw material.
- At its Pontevico site, **Eural Gnutti** also collects and processes post-consumer aluminum scrap, which is purchased from its suppliers. After processing, these materials acquire the **End of Waste** qualification, losing their

status as "waste" and returning to being raw materials.

Separating recyclable and organic waste from other waste can significantly reduce the amount of waste in landfills. At Eural Gnutti, particular waste and waste comparable to urban waste are separated and handed over to private transporters and disposal companies or the municipal collection service for appropriate treatment.

Eural Gnutti invests in adequate infrastructure for the collection, temporary storage, transport, and waste management at its sites. In particular, the waste storage areas at both sites are sheltered from the elements and paved with layers of concrete and waterproofing materials to prevent soil contamination.

The concept of a *circular economy* plays a fundamental role in **Eural Gnutti's** waste management strategy, which is further explored in-depth.



**BOX IN-DEPTH:
CIRCULAR ECONOMY**



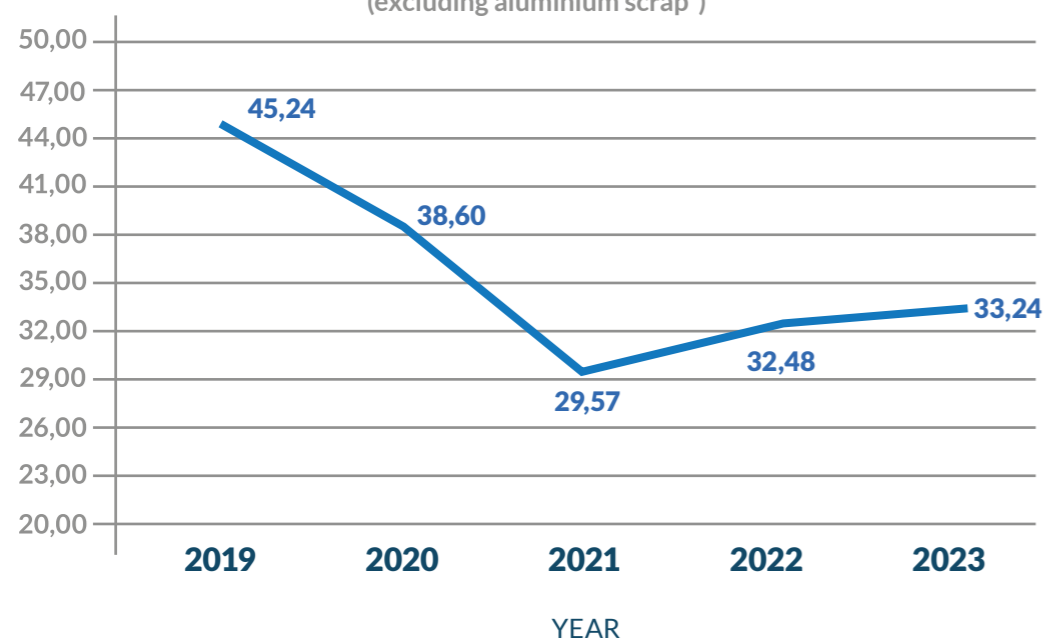
Rovato

WASTE	2023
Total waste (kg)	2.887.190
Waste for disposal (kg)	1.337.220
Waste for recovery (kg)	1.549.970
% of waste to be recovered of the total	54%
Total hazardous waste (kg)	1.295.650
Total non-hazardous waste (kg)	1.591.540
% of hazardous waste of the total	44,9%
% of non-hazardous waste of the total	55,1%
TOTAL WASTE PRODUCTION INDICATOR (kg of waste / total production in tonnes)	33,24

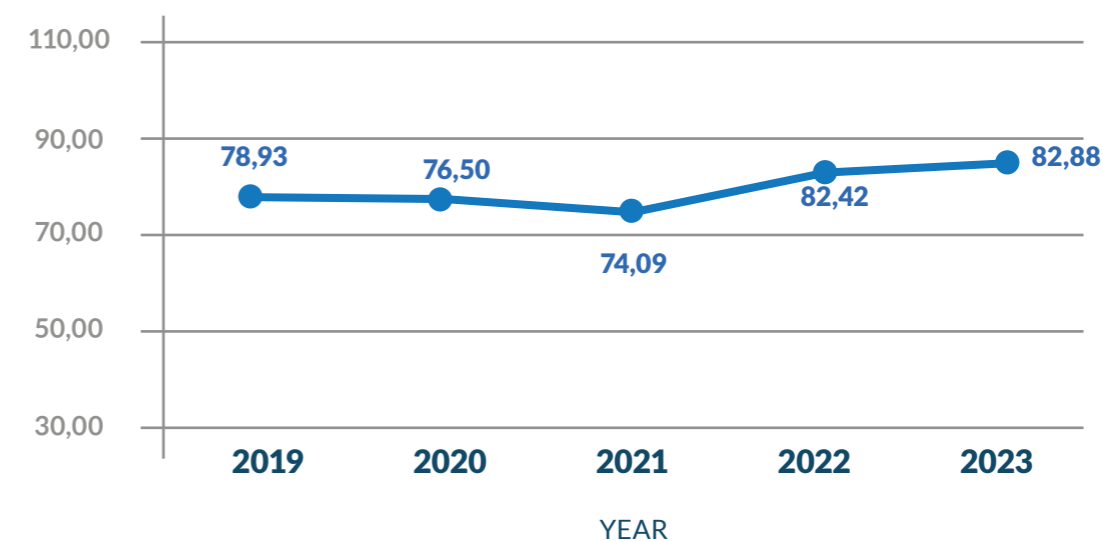
Pontevico

RIFIUTI	2023
Total waste (kg)	5.649.752
Waste for disposal (kg)	494.870
Waste for recovery (kg)	5.154.882
% of waste to be recovered of the total	91%
Total hazardous waste (kg)	4.468.670
Total non-hazardous waste (kg)	1.181.082
% of hazardous waste of the total	79%
% of non-hazardous waste of the total	21%
TOTAL WASTE PRODUCTION INDICATOR (kg of waste / tonnes of billets produced)	82,88

Rovato total waste production indicator trend
(excluding aluminium scrap*)



Pontevico total waste production indicator trend



*Aluminium waste has been excluded for the purpose of calculating this indicator as it is considered a strictly production-dependent share of waste and does not reflect the performance achieved in special waste management.

4.5 Water resource

We recognize that water is a vital resource for everyone, with high social, cultural, and economic value. Access to safe drinking water is a human right recognized internationally. Access to water is essential for the proper functioning of natural systems.

Pressure on water resources is increasing due to industrialization, urbanization, and climate change.

In conducting our business, we must avoid, where possible, and minimize adverse effects on water resources and impacts on water availability and quality.

Water is a fundamental factor for our operations and is used in production processes (cooling and pickling water) and sanitary and catering services for our employees.

Our approach to water management aims to sustain water resources within our operations.

Therefore, we are committed to:

Minimizing our negative impacts: we strive, where possible, to avoid and reduce negative impacts on the natural environment associated with water withdrawal and discharge;

Considering the value of water: continuously improving the integration of water considerations in our planning and operational processes. We aim to maximize water recirculation and reuse in our production processes and to reduce dispersion as much as possible at our plants.

Improving our water-related performance in terms of consumption and pollutant reduction.

Being transparent in sharing information and communicating our water performance and progress in water resource management.



The principles that support us in fulfilling our commitments are:

» Applying an approach based on the analysis of the context in which we operate and evaluating risks and opportunities to support the governance of our water resource management system;

» Legal compliance: we strive to apply the highest standards to fulfill our water management commitments and maintain compliance with applicable laws.

Water balance 2023 Pontevico

SOURCE	ANNUAL WITHDRAWAL	
	INDUSTRIAL WATER (m ³)	DOMESTIC USES (m ³)
Well	83.840	//
Aqueduct	//	25.570
Abstraction of surface water	//	//
Recirculation*	n.d.	//

* Currently, an estimate of the amount of recirculated water is not available

Water balance 2023 Rovato

SOURCE	ANNUAL WITHDRAWAL	
	INDUSTRIAL WATER (m ³)	DOMESTIC USES (m ³)
Well	341.102	//
Aqueduct	//	5.049
Abstraction of surface water	//	//
Recirculation*	1.626.322	//

** The amount of recirculated water is estimated based on the nominal flow rate of the current installed recirculation pumps and their annual operating hours. Healthy water is replenished to compensate for losses caused by evaporative phenomena and dispersion at the user facilities

4.6 Water discharges

The activities carried out by **Eural Gnutti** involve the discharge of wastewater, specifically:

- » **Civil Discharges:** sanitary water from the entire facility and the company canteen was discharged into the public sewer system.
- » **Industrial Discharges:** industrial wastewater discharged into S.W.B (surface water body) or public sewer system, resulting from cooling, pickling, and degreasing processes

	TYPE	PUBLIC SEWER SYSTEM	SURFACE WATERCOURSE	SOIL AND SUBSOIL
ROVATO	Industrial water discharge		X	
	Civil water discharge	X		
	Stormwater discharge		X	X
	Stormwater discharge	X		
PONTEVICO	Industrial water discharge	X		
	Stormwater discharge first rain	X		
	Stormwater discharge second rain		X	
	industrial water discharge	X		

4.7 Atmospheric emissions

Industrial processes inherently carry a risk of pollution due to emissions into the air, which, if not properly managed, can negatively impact the environment and local communities. **Eural Gnutti's** activities comply with authorized guidelines and limits and are supported by effective abatement systems.

YEAR 2023

EMISSIONS	OVERALL MASS FLOW
Dust (kg/year)	2.174,4
PAHs (g/year)	46,0
CO (kg/year)	25.631,9
NOx (kg/year)	71.806,5
Alkaline Aerosols (kg/year)	236,1
Sulfuric Acid (kg/year)	225,5
Dioxins (g/year)	0,00261
PCBs (g/year)	0,00137
Hydrofluoric Acid (kg/year)	473,7
Hydrochloric Acid (kg/year)	740,8
Mercury (g/year)	28,4
Hazardous Metals (kg/year)	2,4
TOC - total organic carbon (kg/year)	6.910,8

4.8 Management of spills and leaks

We recognize the importance of respecting and protecting the air, water, and soil. In conducting our activities, we have the duty to avoid spills and leaks into the atmosphere, water, and soil where possible and minimize the risk by implementing preventive measures.

Eural Gnutti has conducted a risk assessment for spills and leaks into the atmosphere, water, and soil at the Rovato and Pontevico sites using the following methodology:

- » Identification of the area/department subject to risk.
- » Identification of the type of risk (emission into the atmosphere, spills into public sewers or surface watercourses, spills on the soil and subsoil).
- » Formalization of risk management methods (control methods, emergency management procedures).
- » Evaluation of the risk level (low, medium, high).
- » Implementation of improvement actions.

The assessment results revealed a low-risk level for all spills and leaks at the Pontevico site.

However, the assessment of the Rovato site highlighted a medium risk level concerning pollutant spills on the soil and subsoil from stormwater discharges in the employee parking lot area/department.

To prevent and mitigate the risks identified in the assessment, compliance controls already in place will be constantly carried out: visual inspections, continuous monitoring, periodic monitoring, periodic maintenance interventions, and maintenance interventions in case of emergencies.

The risk assessment also led to the implementation of improvement actions for medium-risk spills and leaks by establishing an internal surveillance system to monitor the condition of the pavement.

4.9 Biodiversity and land use

Eural Gnutti's activities may impact biodiversity, the landscape, and land use; in turn, they depend on the use of natural resources such as water but not on living organisms.

Rovato

TOTAL SITE AREA	COVERED AREA	WATERPROOF UNCOVERED AREA	GREEN AREA
243.000 m ²	67.552 m ²	71.490 m ²	71.490 m ²

Pontevico

TOTAL SITE AREA	COVERED AREA	WATERPROOF UNCOVERED AREA	GREEN AREA
112.194 m ²	32.462 m ²	49.640 m ²	30.092 m ²

Land use is predominantly agricultural, and there are no areas of particular natural value or subject to restrictions, such as parks or reserves.



4.10 Noise emissions and containment systems

Both the Municipality of Rovato and Ponteviso have adopted an Acoustic Zoning Plan.

The Rovato site is classified as falling into Class IV' Areas of intense human activity and Class V "Predominantly industrial areas", indicating the potential noise levels. The area of the Ponteviso site is classified partly as "Predominantly Industrial" (Class V) and partly as "Exclusively Industri-

al" (Class VI). The entire perimeter area around the company is classified as Class IV, "areas of intense human activity."

Noise emission containment is effectively managed by implementing soundproofing measures and regular monitoring, demonstrating Eural Gnutti's commitment to environmental responsibility.

SITE	ACOUSTIC ZONING CLASS	NOISE SOURCES	SENSITIVE RECEPTORS	SOUNDPROOFING MEASURES TAKEN
Ponteviso	Class V and VI	Exhaust systems, billet cutting systems, internal raw material handling	Nearby residential areas	Soundproofing of noisy parts of exhaust systems and billet cutting systems
Rovato	Class IV and Class V	Exhaust systems, billet cutting systems, internal material handling	Nearby residential areas and school	Soundproofing of systems; sound-insulated, sealed, and insulated perimeter walls and roof; acoustic insulating doors and glass surfaces

4.11 Plan for reducing emissions, pollutants, and impacts on water resources, waste, and contaminations

Eural Gnutti applies principles of integrated pollution prevention and reduction.

Measures in place:

- 1 Management of material and waste flows:** Separate storage and containment basins for raw materials and waste are used to minimize the risks of spills and contamination and encourage the proper recycling or disposal of waste.
- 2 Heat treatments:** furnaces fueled by natural gas, a fuel with low or no sulfur content, capturing and evacuating emissions through chimneys subjected to periodic control measures.
- 3 Reduction of atmospheric pollutant emissions:** pollutant abatement systems are installed on all conveyed emissions, ensuring full compliance with authorized limits.
- 4 Water discharge management:** separation of different types of wastewater (domestic, industrial, first rain, second rain), collection and treatment of first rainwater before discharge, purification, and monitoring of discharged industrial sewage.
- 5 Water management:** maximizing internal water recirculation for process water and its reuse (cooling and pickling plant water).
- 6 Wastemanagement:** secure storage on containment basins, tanks, and impermeabilized flooring, sheltered from atmospheric agents.
- 7 Maintenance:** scheduled and performed periodic maintenance necessary for the proper functioning and maintenance of the performance of pollutant control systems for the various affected matrices.
- 8 Governance of impacts, risks, and environmental opportunities:** Implementing an Environmental Management System according to the ISO 14001:2015 standard, validated by an Authorized Certification Body.

Planned Measures

Eural Gnutti plans and implements numerous improvement actions annually, including those to reduce its environmental impacts.

The actions planned for 2024 are:

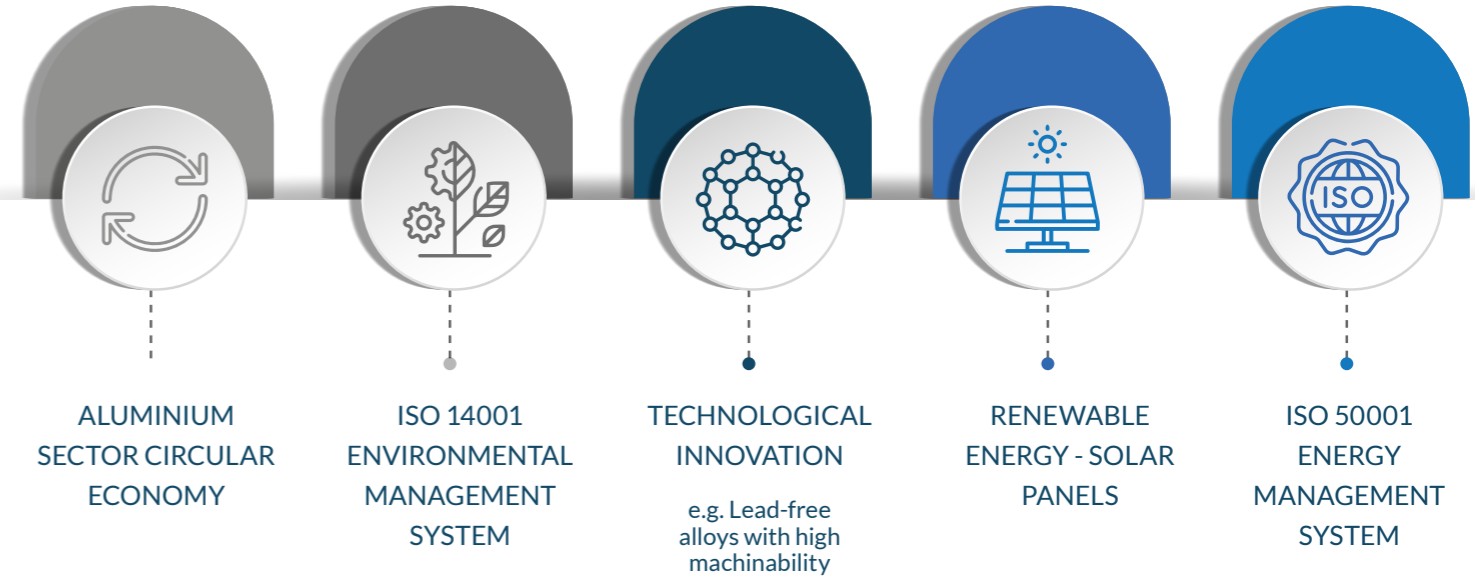
DESCRIPTION OF ACTION	SITE	AREA	TIME
Increase in coverage for the protection of stored waste to further reduce leachate risk in case of rain.	Rovato	Waste	By the end of 2024
Increase in suspended solids filtration capacity in industrial wastewater discharges.	Rovato	Water Discharges	By the end of 2024
A new system for dosing, transporting, and injecting hydrated lime on the fume treatment systems operating on melting and holding furnaces.	Pontevico	Air Emissions	By the end of 2024
In-depth extraordinary maintenance on fume abatement systems to further improve pollutant containment capacity.	Pontevico	Air Emissions	By the end of 2024
A system to measure the recycled water in the closed circuit at Pontevico will be installed.	Pontevico	Water Resource	By the end of 2025



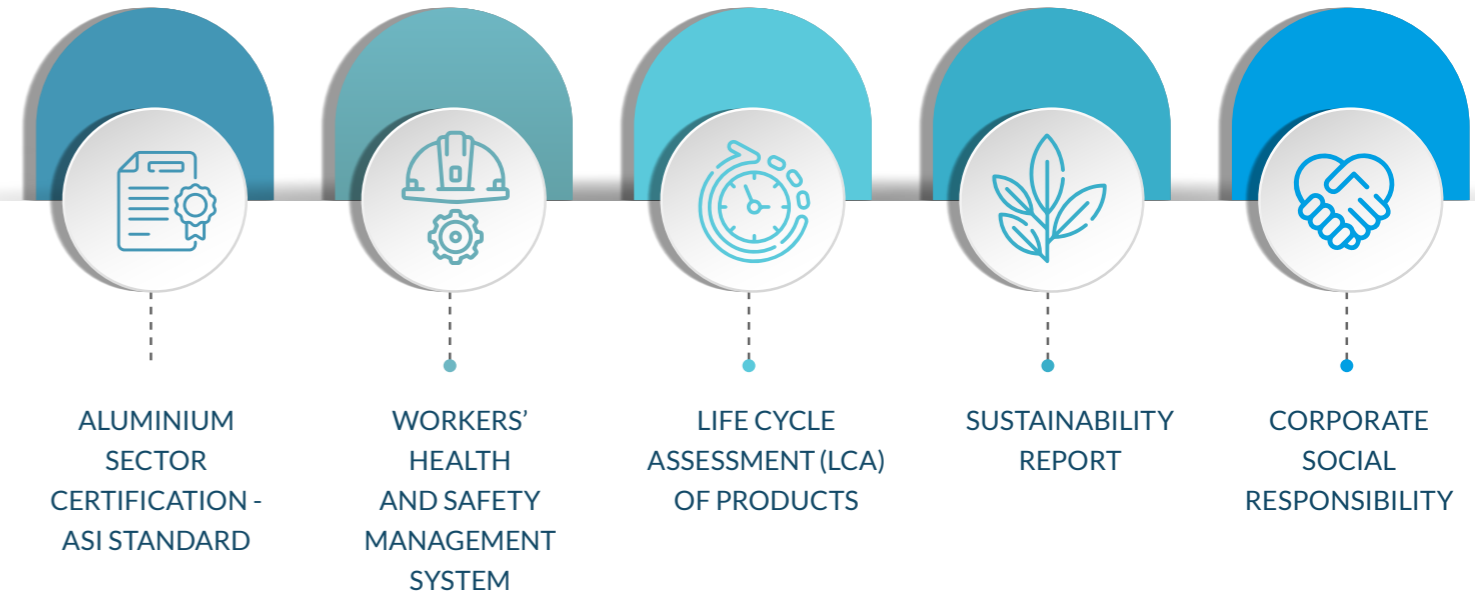
5. Goals: Commitment of Eural Gnutti S.p.A.



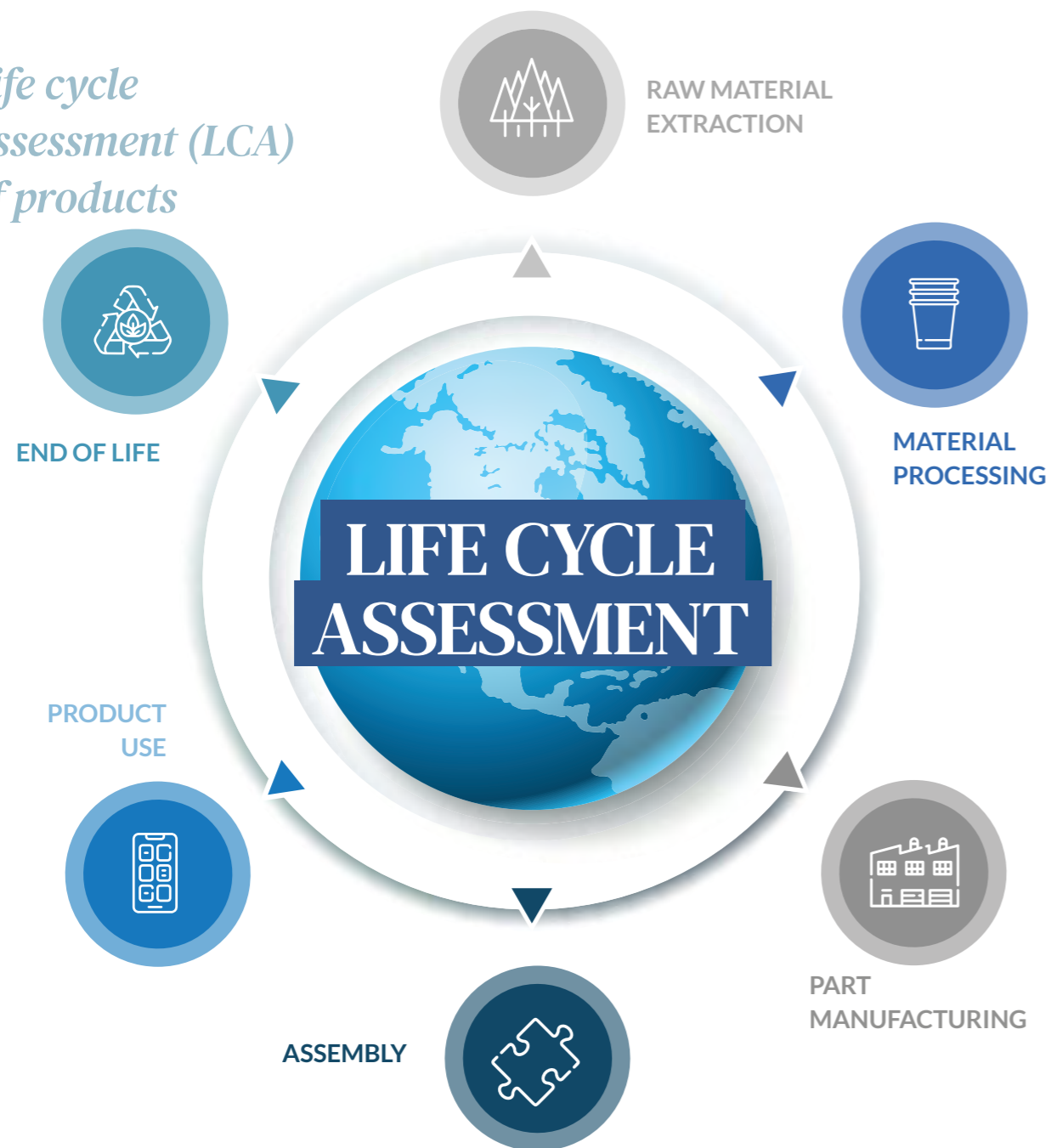
The present



Goals that Eural Gnutti is currently working towards



Life cycle assessment (LCA) of products



LCA (Life Cycle Assessment) is a method used to assess the environmental impact associated with all stages of a product's life cycle, from 'cradle-to-gate' or from 'cradle-to-grave' based on the scope being considered. For example, from 'cradle-to-grave' LCAs include extraction and processing of raw materials, production, transport, use, recycling and final disposal. From 'cradle-to-gate' LCAs instead assess the environmental impact of a product from extraction and processing of raw materials, across the entire production cycle up until the point at which the product leaves the factory gates.



The aim of the LCA is to identify areas for improving the environmental performance of products at various decision-making levels, including strategic design, process improvement, choice of materials and life cycle optimisation.

LCAs are based on two international standards:

- » ISO 14040: Environmental management - Life Cycle Assessment - Principles and Framework.
- » ISO 14044: Environmental management - Life Cycle Assessment - Requirements and Guidelines.

Eural Gnutti includes the 'cradle-to-gate' life cycle assessment of its products amongst its goals in order to minimise their environmental impact without compromising on product performance; in particular, throughout 2024 Eural Gnutti in-

tends to conduct the assessment starting with two of its most important alloys:

- 2033
- 6026LF

Corporate social responsibility

Eural Gnutti intends to engage on the topic of corporate social responsibility in order to contribute towards the well-being of the company and the region.

For this purpose, the company shall apply the guidelines of the SA8000 international standard.



The aim of SA8000 is to guarantee workers' rights across the entire supply chain, paying attention to the following topics:

- CHILD LABOUR
- FORCED LABOUR
- FREEDOM OF ASSOCIATION AND THE RIGHT TO COLLECTIVE BARGAINING
- HEALTH AND SAFETY
- DISCRIMINATION
- DISCIPLINARY PROCEDURES
- WORKING HOURS
- REMUNERATION



6. GRI standard reference table



GRI 102-55



TOPIC	DOCUMENT	SECTION OF THE REPORT	REPORT PAGE
102 GENERAL DISCLOSURES Profile of the Organisation	102-1 Organisation Name	Sect. 1.4	17
102 GENERAL DISCLOSURES Profile of the Organisation	102-2 Activity, brands, products and services	Sect. 1.4 Sect. 1.5 In-depth look: Lead-free alloys with high machinability	17 23 30
102 GENERAL DISCLOSURES Profile of the Organisation	102-3 Principal place of business	Sect. 1.4	17
102 GENERAL DISCLOSURES Profile of the Organisation	102-4 Place of activity	Sect. 1.4	17
102 GENERAL DISCLOSURES Profile of the Organisation	102-6 Markets served	Sect. 1.4	17
102 GENERAL DISCLOSURES Profile of the Organisation	102-7 Organisation size	Sect. 1.4 Sect. 3.1	17 52
102 GENERAL DISCLOSURES Profile of the Organisation	102-8 Information on employees and other workers	Sect. 3.1	52
102 GENERAL DISCLOSURES Profile of the Organisation	102-9 Supply chain	Sect. 2.3	49
102 GENERAL DISCLOSURES Strategy	102-14 Statement by a senior manager	Letter to Stakeholders	4
102 GENERAL DISCLOSURES Ethics and integrity	102-16 Values, principles, standards and rules of conduct	Sect. 1.6	32
102 GENERAL DISCLOSURES Governance	102-18 Governance structure	Sect. 1.6	32
102 GENERAL DISCLOSURES Governance	102-20 Executive responsibility for economic, environmental and social issues	Sect. 4.1	64
102 GENERAL DISCLOSURES Governance	102-21 Executive responsibility for economic, environmental and social issues	Sect. 1.2	13
102 GENERAL DISCLOSURES Stakeholder involvement	102-40 List of stakeholder groups	Sect. 1.2	13
102 GENERAL DISCLOSURES Stakeholder involvement	102-42 Identification and selection of stakeholders	Sect. 1.2	13

TOPIC	DOCUMENT	SECTION OF THE REPORT	REPORT PAGE
102 GENERAL DISCLOSURES Stakeholder involvement	102-43 Method of involving stakeholders	Sect. 1.2 Sect. 3.2	13 54
102 GENERAL DISCLOSURES Reporting practices	102-47 List of material issues	Sect. 1.3	15
102 GENERAL DISCLOSURES Reporting practices	102-53 Contact information to request information pertaining to the report	Sect. 7	92
102 GENERAL DISCLOSURES Reporting practices	102-55 GRI content index	Sect. 6	88
201 ECONOMIC PERFORMANCE	201-1 Direct economic value generated and distributed	Sect. 2.1	42
301 MATERIALS	301-2 Recycled input materials used	Aluminium as a strategic material to support decarbonisation	38
		In-depth look: circular economy	44 65
302 ENERGIA	302-1 Energy consumption within the organisation	Sect. 4.2	65
302 ENERGY	302-3 Energy intensity	Sect. 4.2	65
302 ENERGY	302-4 Reduction of energy consumption	In-depth look: solar	66
305 EMISSIONS	305-1 Direct GHG emissions (Scope 1)	Sect. 4.3	67
305 EMISSIONS	305-2 Indirect GHG emissions from energy consumption (Scope 2)	Sect. 4.3	67
305 EMISSIONS	305-5 Reduction of GHG emissions	Sect. 4.3	67
306 WASTE	306-3 Waste generated	Sect. 4.4	70
306 WASTE	306-4 Waste diverted from disposal	Sect. 4.4	70
306 WASTE	306-5 Waste diverted from disposal	Sect. 4.4	70

TOPIC	DOCUMENT	SECTION OF THE REPORT	REPORT PAGE
401 EMPLOYMENT	401-2 Benefits provided to full-time employees that are not provided to temporary or part-time employees	Sect. 3.5	59
403 OCCUPATIONAL HEALTH AND SAFETY	403-1 Occupational health and safety management system	Sect. 3.3	56
403 OCCUPATIONAL HEALTH AND SAFETY	403-2 Hazard identification, risk assessment, and incident investigation	Sect. 3.3	56
403 OCCUPATIONAL HEALTH AND SAFETY	403-4 Worker participation, consultation and communication on occupational health and safety	Sect. 3.3	56
403 OCCUPATIONAL HEALTH AND SAFETY	403-5 Worker training on occupational health and safety	Sect. 3.2	54
403 OCCUPATIONAL HEALTH AND SAFETY	403-6 Promotion of worker health	Sect. 3.3 Sect. 3.5	56 59
403 OCCUPATIONAL HEALTH AND SAFETY	403-7 Prevention and mitigation of occupational health and safety impacts directly linked by business relationships	Sect. 3.3	56
403 OCCUPATIONAL HEALTH AND SAFETY	403-9 Work-related injuries	Sect. 3.3	56
404 TRAINING AND EDUCATION	/	In-depth look: training event on sustainability	60
404 TRAINING AND EDUCATION	404-1 Average hours of training per year per employee	Sect. 3.2	54
404 TRAINING AND EDUCATION	404-3 Percentage of employees receiving regular performance and career development reviews	Sect. 3.2	54
405 DIVERSITY AND EQUAL OPPORTUNITY	405-1 Diversity of employees	Sect. 3.1	52
413 LOCAL COMMUNITIES	413-1 Operations with local community engagement, impact assessments and development programmes	Sect. 3.4	57

7. Contacts



GRI 102-53

To request information regarding the report you can contact:

Gianfranco Cazzago
sustainability@eural.com

Eural Gnutti S.p.A.
25038 Rovato (Brescia) Italy
Via S. Andrea, 3

www.eural.com

Aluminium with technology





Sustainability Report 2023

Eural Gnutti S.p.A.

Rovato, (BS) Italy

www.eural.com
